

Top Plates: 2x6 SPF #2 15' 1-3/16" 53.1 \ Rk \ -53.1 Bottom Plates: 2x6 SPF #2 13' 4"  
2x6 SPF #2 7' 5-1/2" -53.1 / Rk / 53.1

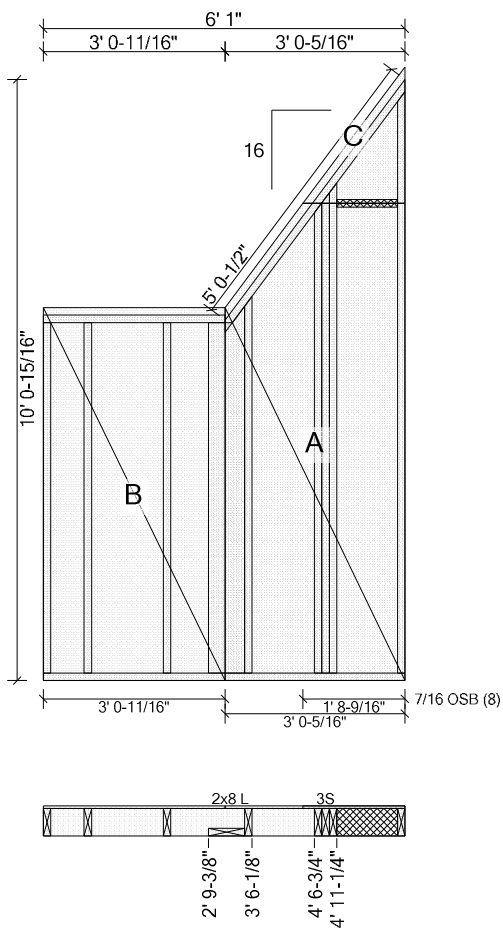
Studs: 2x6 SPF #2 9' 10-15/16"	53.1 \ Rk	2x6 SPF #2 9' 0-5/8"	-53.1 / Rk
2x6 SPF #2 10' 9-15/16"	-53.1 / Rk	2x6 SPF #2 11' 7-1/4"	53.1 \ Rk

Components & Subcomponents	Start	End
2-W1* (7' 0", 3' 11-3/4")	1' 7-1/8"	7' 2-7/8"
(1) 2x6 SPF #2	10' 4-3/4"	10' 6-1/4"
2x8 L (2x8 Dn)	11' 3-7/8"	12' 0-5/8"
2X6 L (2x6 Dn)	12' 9"	@ End

Exterior Sheathing: 7/16 OSB (8)    Start: Flush    End: Flush

## Blocking & Letin

2x6 SPF #2 Inline At: 8' 0"



Top Plates: 2x6 SPF #2 5' 2-1/2"    -53.1 / Rk / 53.1    Bottom Plates: 2x6 SPF #2 6' 1"  
2x6 SPF #2 3' 0-11/16"

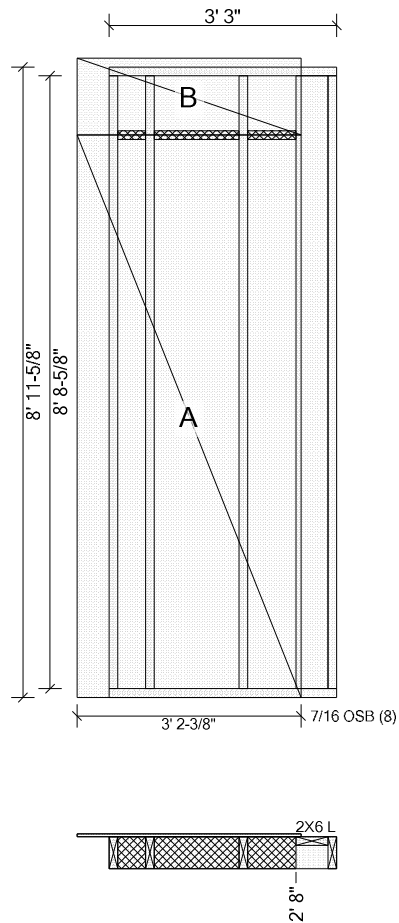
Studs: (3) 2x6 SPF #2 5' 10-1/2"    2x6 SPF #2 9' 8-15/16"    53.1 \ Rk |

Components & Subcomponents	Start	End
2x8 L (2x8 Dn)	2' 9-3/8"	3' 6-1/8"
3S	4' 6-3/4"	4' 11-1/4"

Exterior Sheathing: 7/16 OSB (8)    Start: Flush    End: Flush

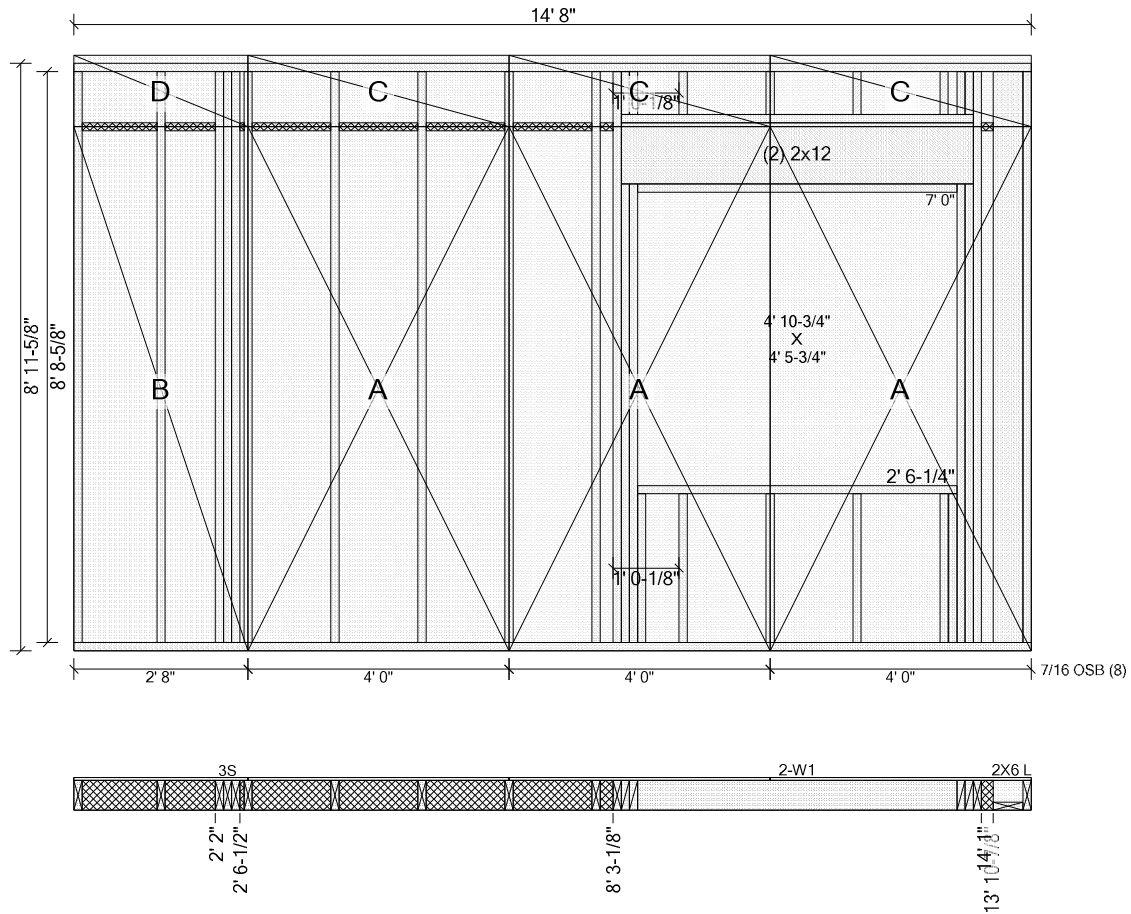
Blocking & Letin

2x6 SPF #2    Inline At: 8' 0"



Top Plates:    2x6 SPF #2 3' 3"    Bottom Plates: 2x6 SPF #2 3' 3"  
Studs: (3) 2x6 SPF #2 8' 8-5/8"

Components & Subcomponents	Start	End
2X6 L (2x6 Up)	2' 8"	@ End
Exterior Sheathing: 7/16 OSB (8)	Start: Fly 5-1/2"	End: Hold 6-1/8"
Blocking & Letin		
2x6 SPF #2    Inline At: 8' 0"		



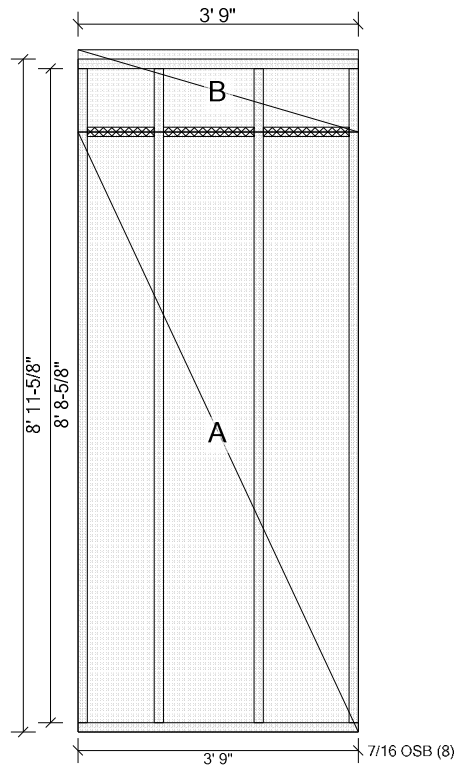
Top Plates:    2x6 SPF #2 14' 8"    Bottom Plates: 2x6 SPF #2 14' 8"  
Studs: (7) 2x6 SPF #2 8' 8-5/8"

Components & Subcomponents	Start	End
3S	2' 2"	2' 6-1/2"
2-W1 (7' 0")	8' 3-1/8"	13' 10-7/8"
2X6 L (2x6 Dn)	14' 1"	@ End

Exterior Sheathing: 7/16 OSB (8)    Start: Flush    End: Flush

Blocking & Letin

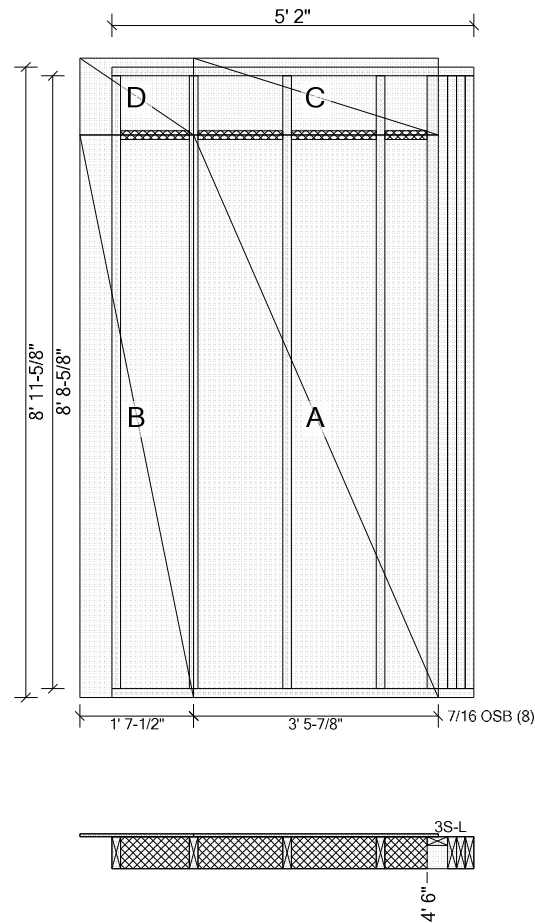
2x6 SPF #2    Inline At: 8' 0"



Top Plates: 2x6 SPF #2 3' 9" Bottom Plates: 2x6 SPF #2 3' 9"  
Studs: (4) 2x6 SPF #2 8' 8-5/8"  
Exterior Sheathing: 7/16 OSB (8) Start: Flush End: Flush

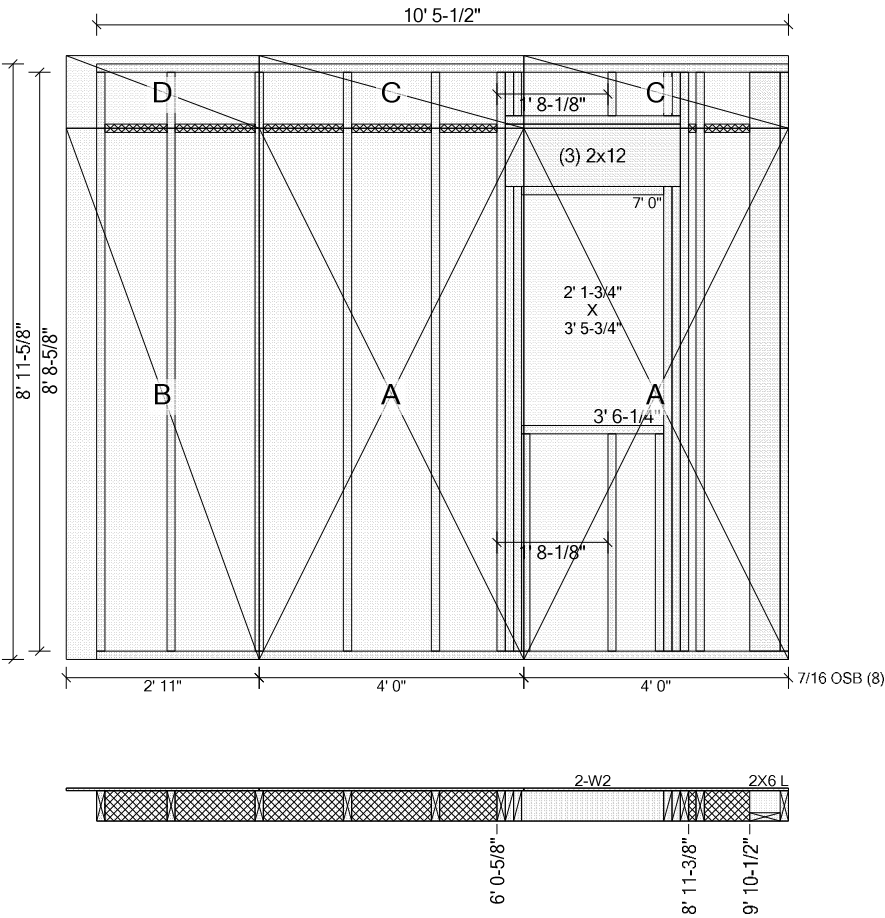
#### Blocking & Letin

2x6 SPF #2 Inline At: 8' 0"



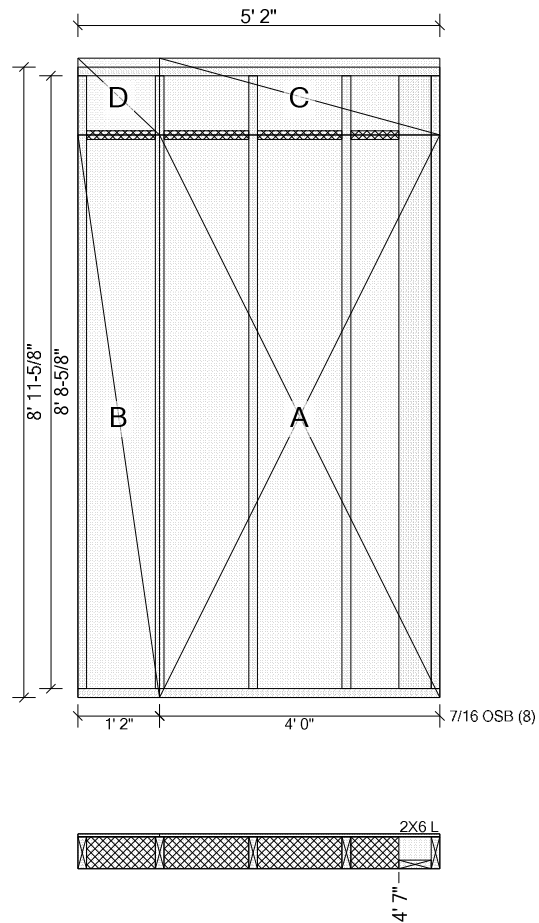
Top Plates:    2x6 SPF #2 5' 2"    Bottom Plates: 2x6 SPF #2 5' 2"  
Studs: (4) 2x6 SPF #2 8' 8-5/8"

Components & Subcomponents	Start	End
3S-L (2x4 Up)	4' 6"	@ End
Exterior Sheathing: 7/16 OSB (8)	Start: Fly 5-1/2"	End: Hold 6-1/8"
Blocking & Letin		
2x6 SPF #2    Inline At: 8' 0"		



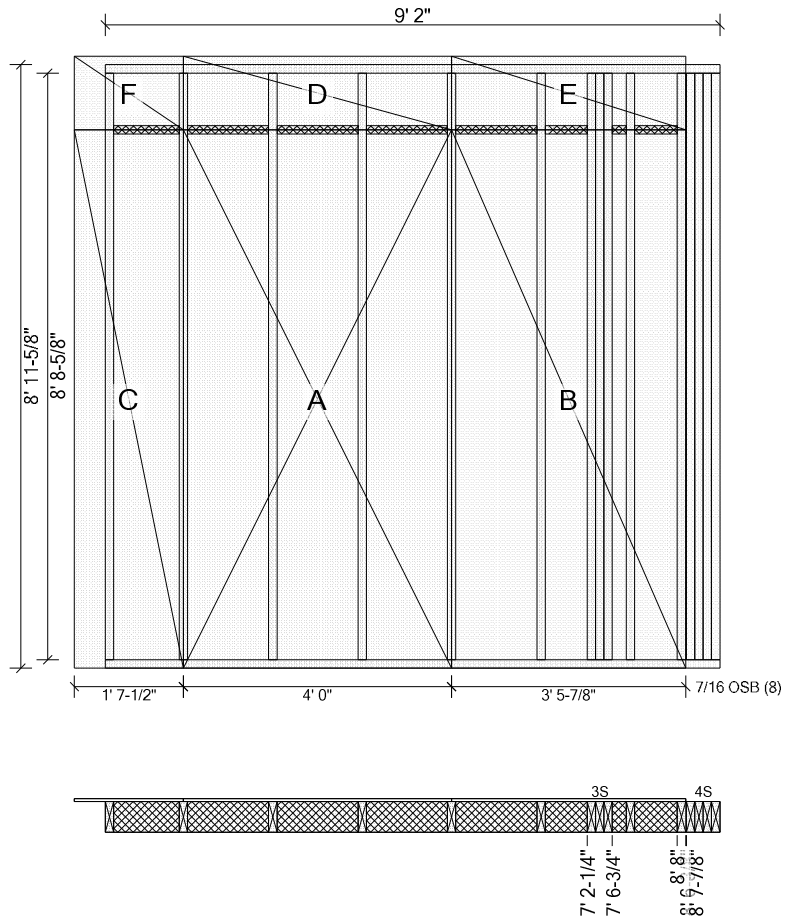
Top Plates:    2x6 SPF #2 10' 5-1/2"    Bottom Plates: 2x6 SPF #2 10' 5-1/2"  
Studs: (6) 2x6 SPF #2 8' 8-5/8"

Components & Subcomponents	Start	End
2-W2 (7' 0")	6' 0-5/8"	8' 11-3/8"
2X6 L (2x6 Dn)	9' 10-1/2"	@ End
Exterior Sheathing: 7/16 OSB (8)	Start: Fly 5-1/2"	End: Flush
Blocking & Letin		
2x6 SPF #2    Inline At: 8' 0"		



Top Plates:    2x6 SPF #2 5' 2"    Bottom Plates: 2x6 SPF #2 5' 2"  
Studs: (4) 2x6 SPF #2 8' 8-5/8"

Components & Subcomponents	Start	End
2X6 L (2x6 Dn)	4' 7"	@ End
Exterior Sheathing: 7/16 OSB (8)	Start: Flush	End: Flush
Blocking & Letin		
2x6 SPF #2	Inline At: 8' 0"	



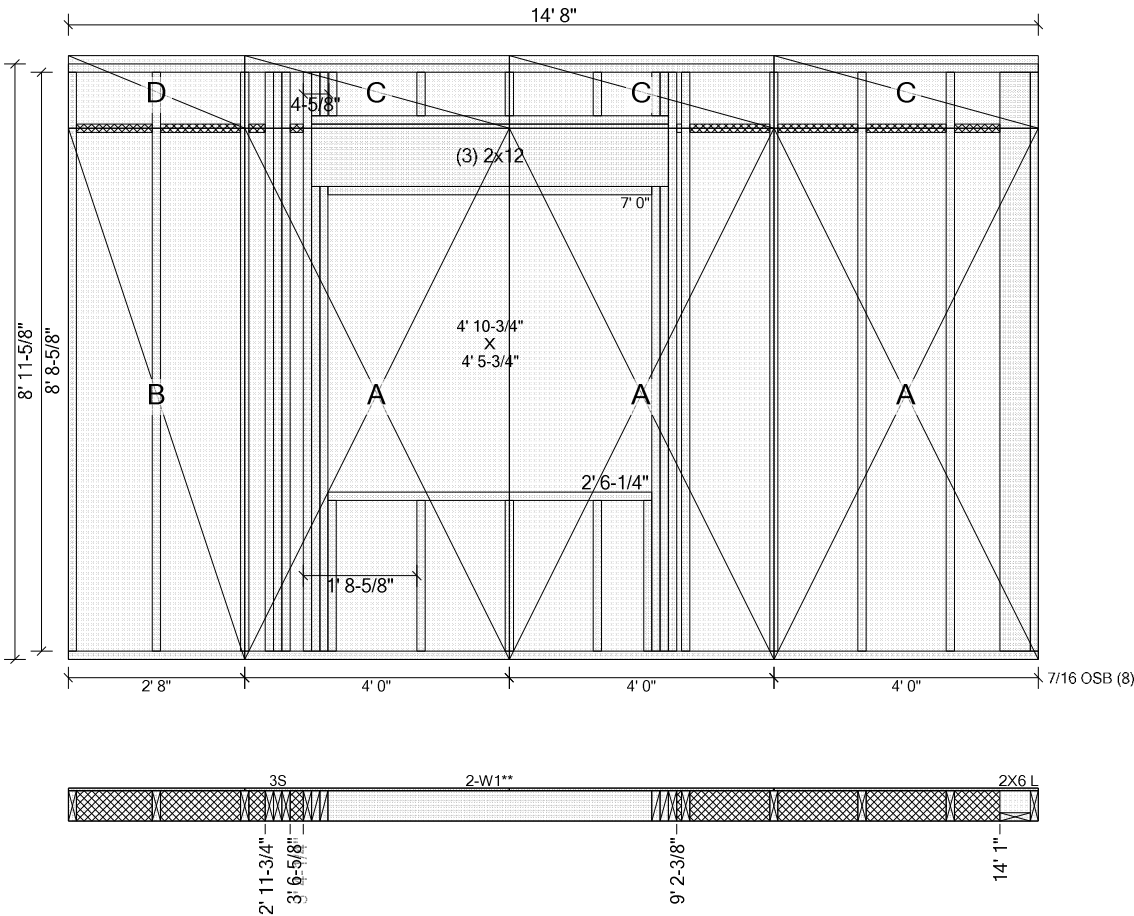
Top Plates: 2x6 SPF #2 9' 2" Bottom Plates: 2x6 SPF #2 9' 2"  
Studs: (7) 2x6 SPF #2 8' 8-5/8"

Components & Subcomponents	Start	End
3S	7' 2-1/4"	7' 6-3/4"
(1) 2x6 SPF #2	8' 6-3/8"	8' 7-7/8"
4S	8' 8"	@ End

Exterior Sheathing: 7/16 OSB (8)    Start: Fly 5-1/2"    End: Hold 6-1/8"

## Blocking & Letin

2x6 SPF #2 Inline At: 8' 0"



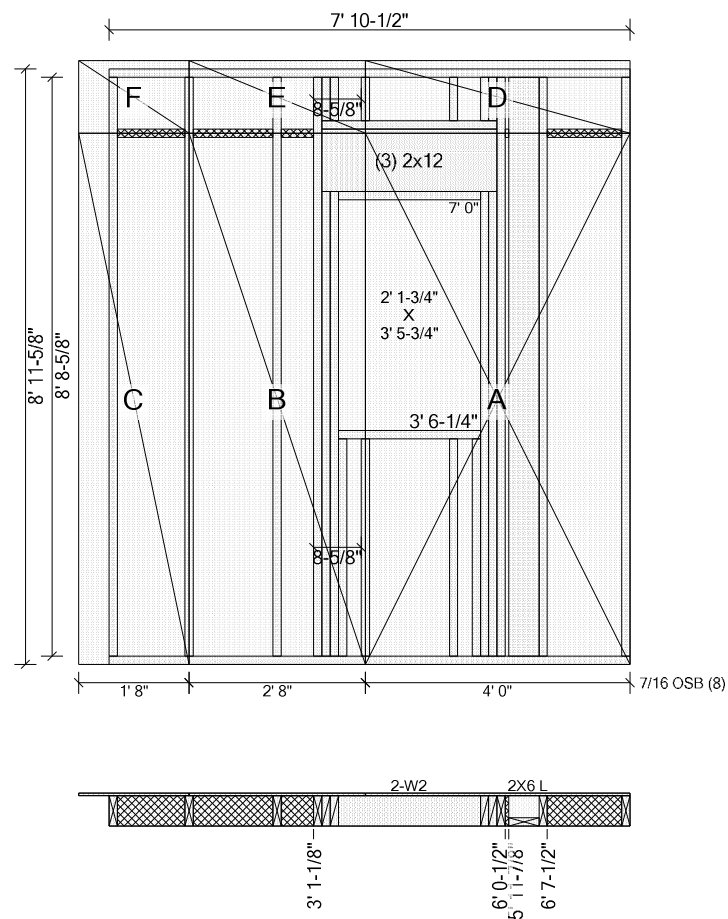
Top Plates:    2x6 SPF #2 14' 8"    Bottom Plates: 2x6 SPF #2 14' 8"  
Studs: (7) 2x6 SPF #2 8' 8-5/8"

Components & Subcomponents	Start	End
3S	2' 11-3/4"	3' 4-1/4"
2-W1** (7' 0")	3' 6-5/8"	9' 2-3/8"
2X6 L (2x6 Dn)	14' 1"	@ End

Exterior Sheathing: 7/16 OSB (8)    Start: Flush    End: Flush

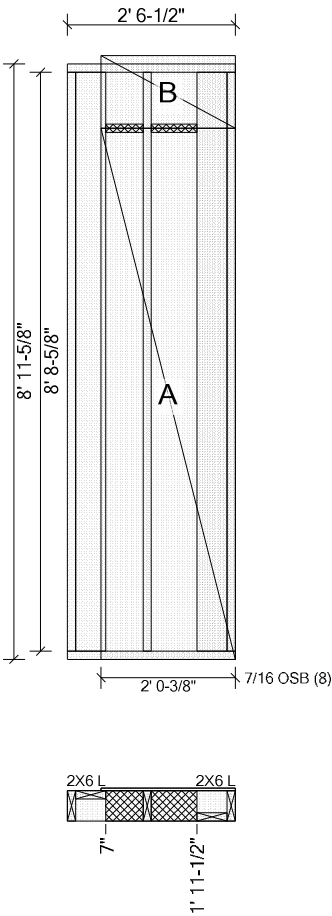
Blocking & Letin

2x6 SPF #2    Inline At: 8' 0"



Top Plates:    2x6 SPF #2 7' 10-1/2"   Bottom Plates: 2x6 SPF #2 7' 10-1/2"  
Studs: (4) 2x6 SPF #2 8' 8-5/8"

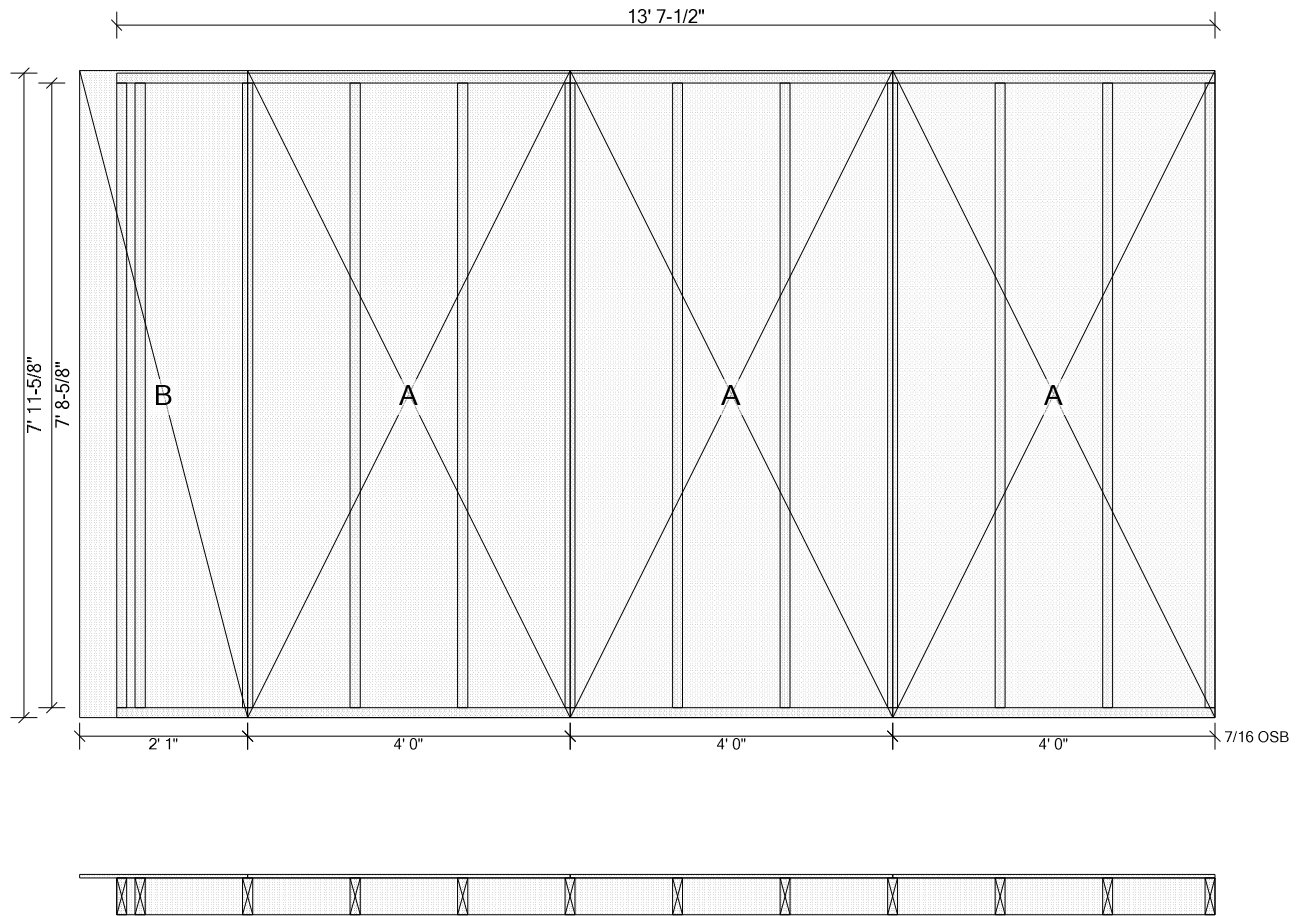
Components & Subcomponents	Start	End
2-W2 (7' 0")	3' 1-1/8"	5' 11-7/8"
2X6 L (2x6 Dn)	6' 0-1/2"	6' 7-1/2"
Exterior Sheathing: 7/16 OSB (8)	Start: Fly 5-1/2"	End: Flush
Blocking & Letin		
2x6 SPF #2   Inline At: 8' 0"		



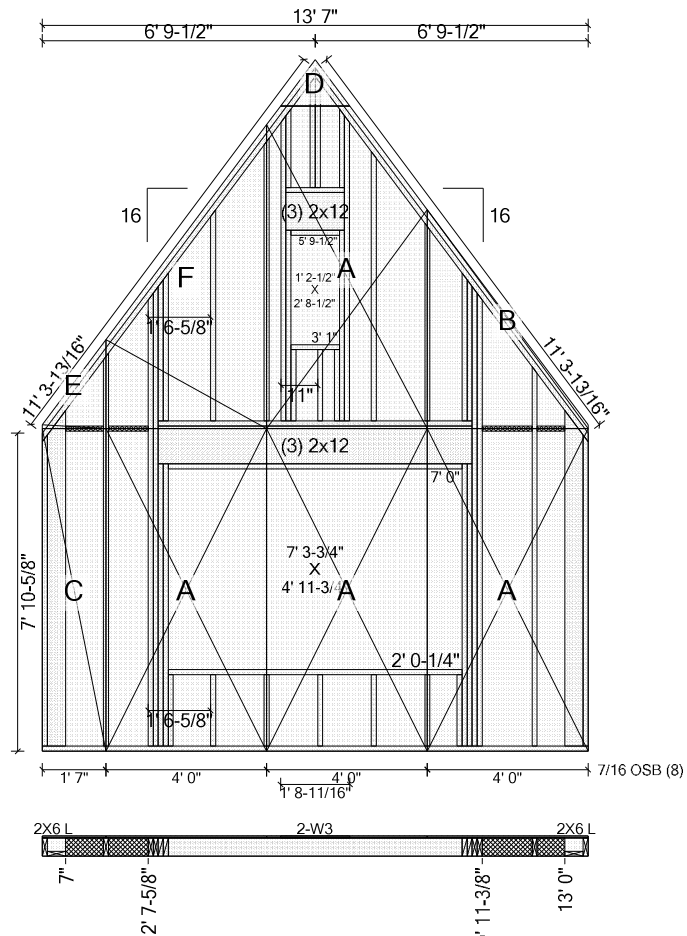
Top Plates: 2x6 SPF #2 2' 6-1/2"    Bottom Plates: 2x6 SPF #2 2' 6-1/2"  
Studs: 2x6 SPF #2 8' 8-5/8"

Components & Subcomponents	Start	End
2X6 L (2x6 Up)	@ Start	7"
2X6 L (2x6 Dn)	1' 11-1/2"	@ End
Exterior Sheathing: 7/16 OSB (8)	Start: Hold 6-1/8"	End: Flush
Blocking & Letin		
2x6 SPF #2	Inline At: 8' 0"	

Panel #EX66 Length: 13' 7-1/2" Height: 8' 1-1/8" First Stud Face @2-3/4" (1' 4" o.c.) Diagonal: 15' 9-7/16"



Top Plates: 2x6 SPF #2 13' 7-1/2" Bottom Plates: 2x6 SPF #2 13' 7-1/2"  
Studs: (12) 2x6 SPF #2 7' 8-5/8"  
Exterior Sheathing: 7/16 OSB (8) Start: Fly 5-1/2" End: Flush



Top Plates: 2x6 SPF #2 11' 5-13/16" 53.1 \ Rk \ -53.1 Bottom Plates: 2x6 SPF #2 13' 7"  
2x6 SPF #2 11' 5-13/16" -53.1 / Rk / 53.1

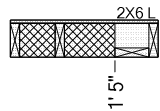
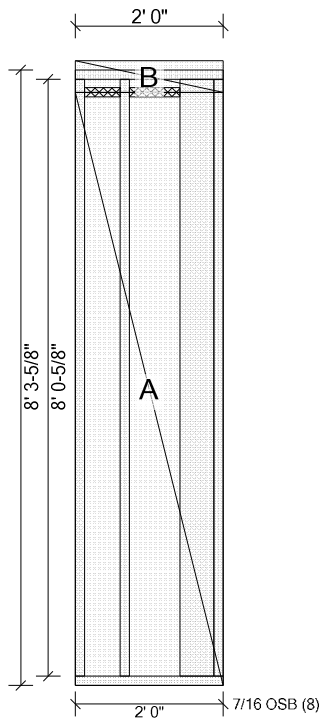
Studs: 2x6 SPF #2 9' 4-15/16" -53.1 / Rk | 2x6 SPF #2 9' 8-15/16" 53.1 \ Rk |

Components & Subcomponents	Start	End
2X6 L (2x6 Dn)	@ Start	7"
2-W3 (7' 0", 4' 8-3/4")	2' 7-5/8"	10' 11-3/8"
2X6 L (2x6 Dn)	13' 0"	@ End

Exterior Sheathing: 7/16 OSB (8)    Start: Flush    End: Flush

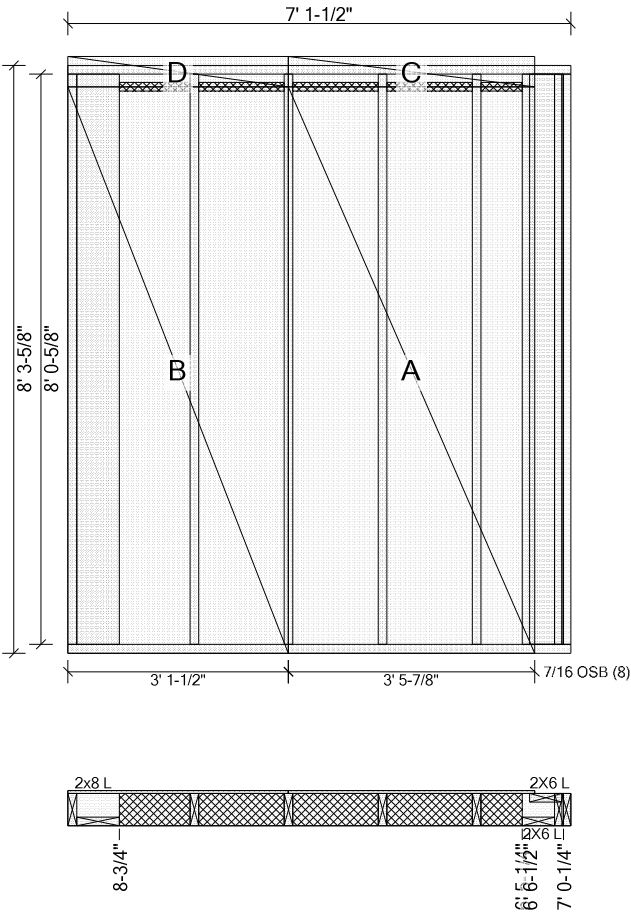
## Blocking & Letin

2x6 SPF #2 Inline At: 8' 0"



Top Plates:    2x6 SPF #2 2' 0"    Bottom Plates: 2x6 SPF #2 2' 0"  
Studs: (2) 2x6 SPF #2 8' 0-5/8"

Components & Subcomponents	Start	End
2X6 L (2x6 Dn)	1' 5"	@ End
Exterior Sheathing: 7/16 OSB (8)	Start: Flush	End: Flush
Blocking & Letin		
2x6 SPF #2	Inline At: 8' 0"	



Top Plates:    2x6 SPF #2 7' 1-1/2"    Bottom Plates: 2x6 SPF #2 7' 1-1/2"  
Studs: (4) 2x6 SPF #2 8' 0-5/8"

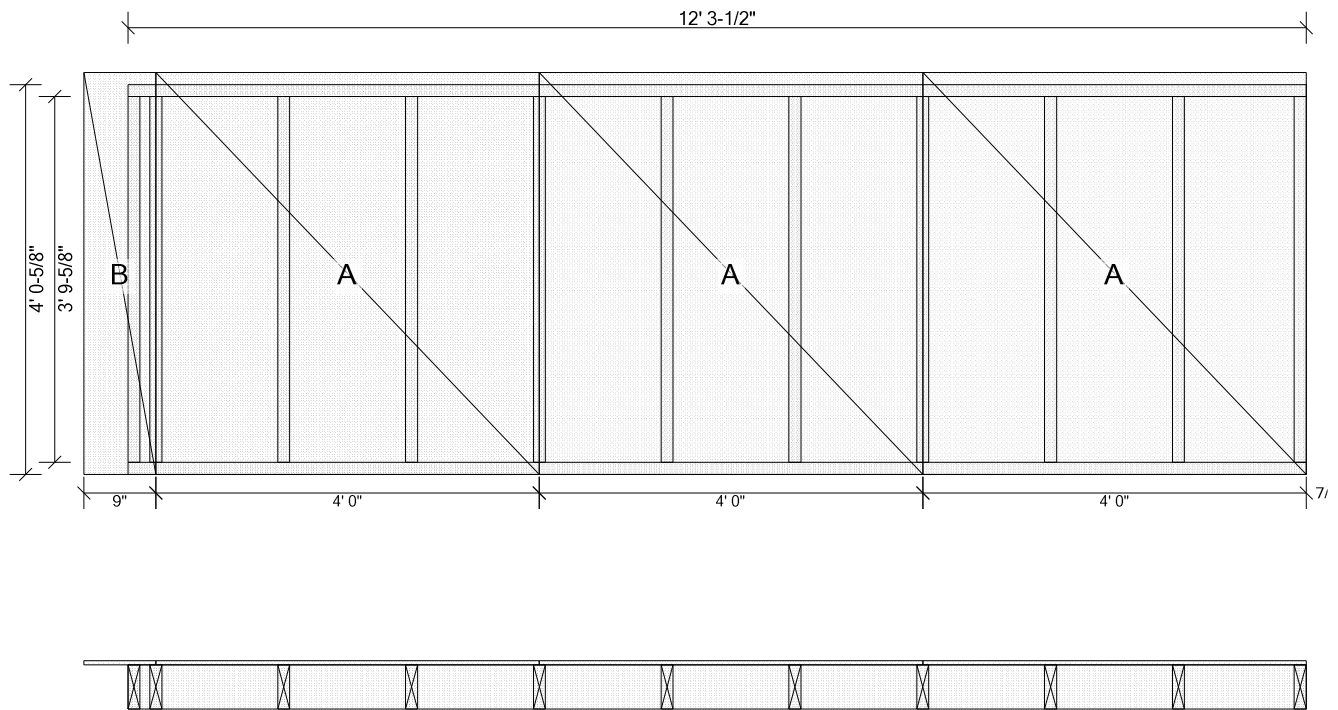
Components & Subcomponents	Start	End
2x8 L (2x8 Dn)	@ Start	8-3/4"
2X6 L (2x6 Dn)	6' 5-1/4"	7' 0-1/4"
2X6 L (2x6 Up)	6' 6-1/2"	@ End

Exterior Sheathing: 7/16 OSB (8)    Start: Flush    End: Hold 6-1/8"

Blocking & Letin

2x6 SPF #2    Inline At: 8' 0"

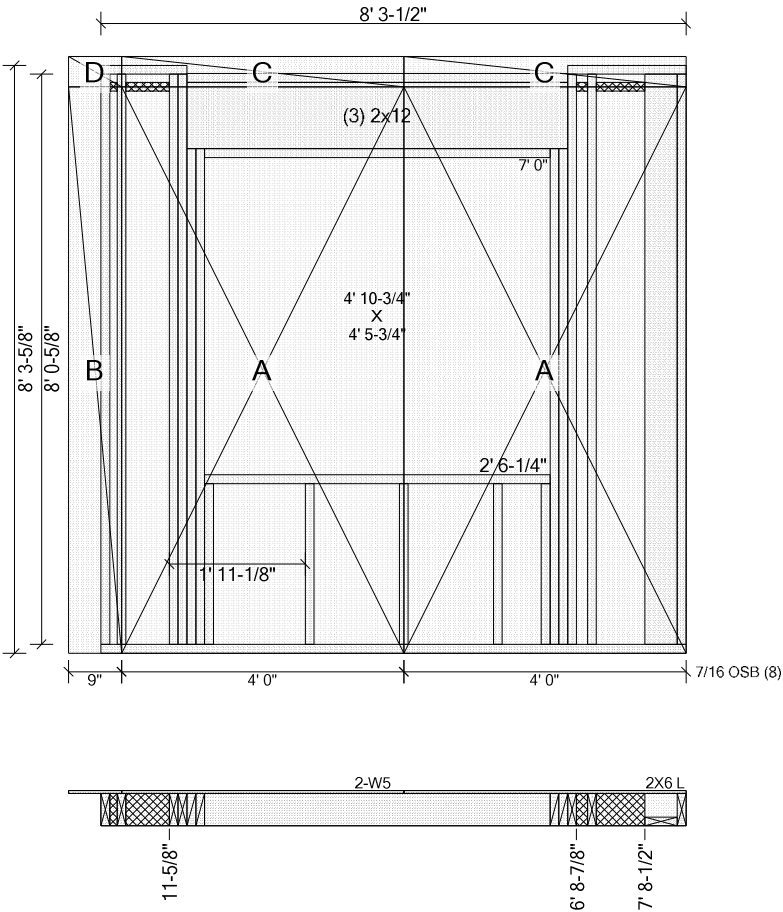
Panel #EX70 Length: 12' 3-1/2" Height: 4' 2-1/8" First Stud Face @2-3/4" (1' 4" o.c.) Diagonal: 12' 11-5/16"



Top Plates: 2x6 SPF #2 12' 3-1/2" Bottom Plates: 2x6 SPF #2 12' 3-1/2"

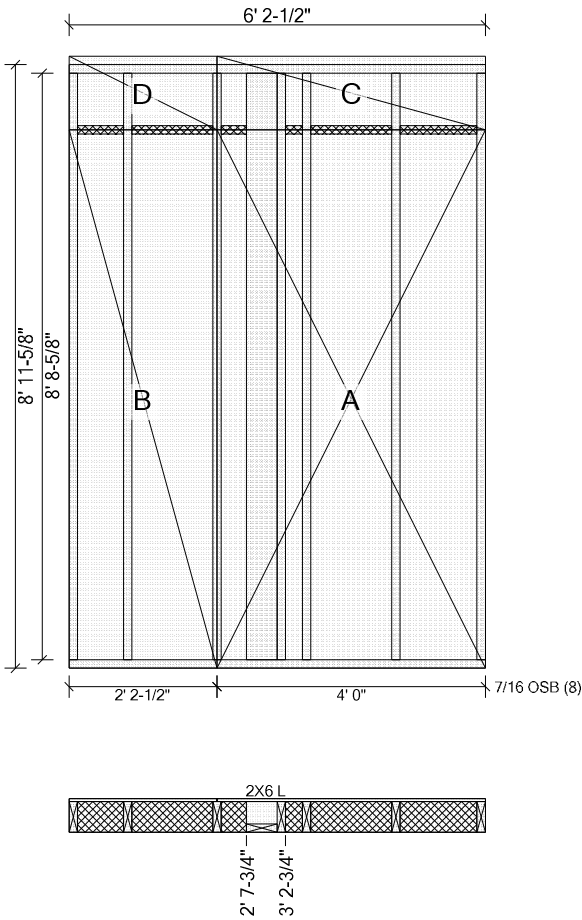
Studs: (11) 2x6 SPF #2 3' 9-5/8"

Exterior Sheathing: 7/16 OSB (8) Start: Fly 5-1/2" End: Flush



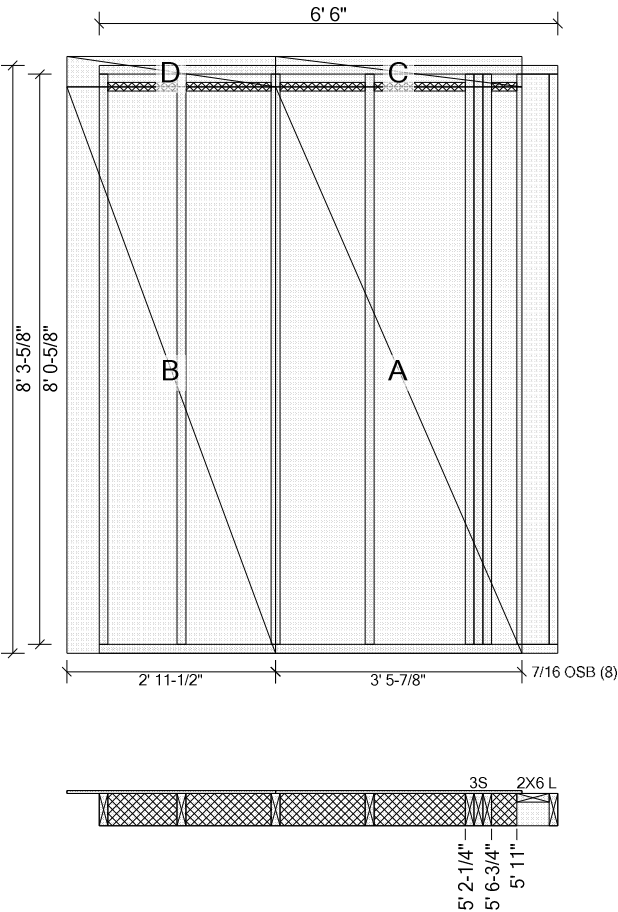
Top Plates:    2x6 SPF #2 1' 8-1/8"    Bottom Plates: 2x6 SPF #2 8' 3-1/2"  
                  2x6 SPF #2 1' 2-5/8"  
Studs: (3) 2x6 SPF #2 8' 0-5/8"

Components & Subcomponents	Start	End
2-W5 (7' 0")	11-5/8"	6' 8-7/8"
2X6 L (2x6 Dn)	7' 8-1/2"	@ End
Exterior Sheathing: 7/16 OSB (8)	Start: Fly 5-1/2"	End: Flush
Blocking & Letin		
2x6 SPF #2    Inline At: 8' 0"		



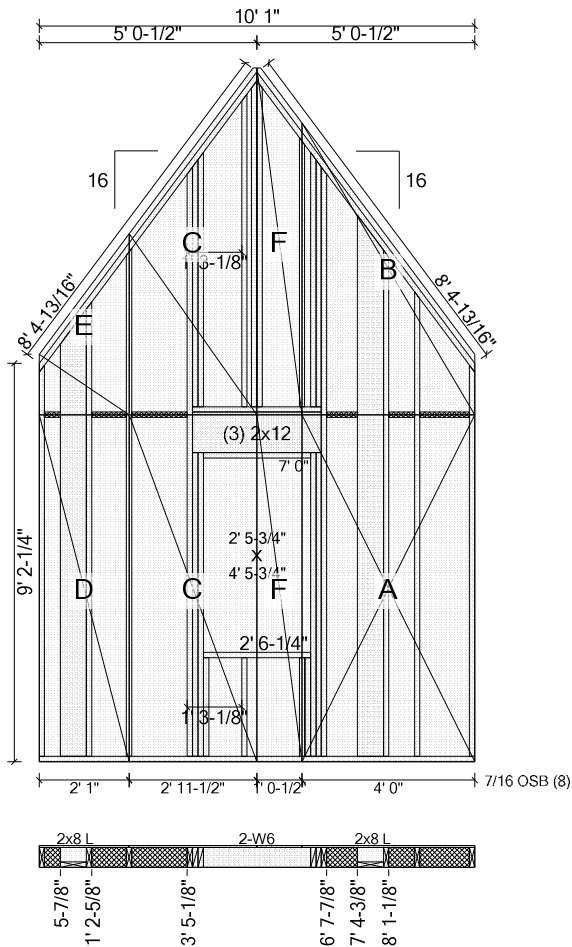
Top Plates:    2x6 SPF #2 6' 2-1/2"   Bottom Plates: 2x6 SPF #2 6' 2-1/2"  
Studs: (6) 2x6 SPF #2 8' 8-5/8"

Components & Subcomponents	Start	End
2X6 L (2x6 Dn)	2' 7-3/4"	3' 2-3/4"
Exterior Sheathing: 7/16 OSB (8)	Start: Flush	End: Flush
Blocking & Letin		
2x6 SPF #2   Inline At: 8' 0"		



Top Plates:     2x6 SPF #2 6' 6"     Bottom Plates: 2x6 SPF #2 6' 6"  
Studs: (4) 2x6 SPF #2 8' 0-5/8"

Components & Subcomponents	Start	End
3S	5' 2-1/4"	5' 6-3/4"
2X6 L (2x6 Up)	5' 11"	@ End
Exterior Sheathing: 7/16 OSB (8)	Start: Fly 5-1/2"	End: Hold 6-1/8"
Blocking & Letin		
2x6 SPF #2	Inline At: 8' 0"	



Top Plates: 2x6 SPF #2 8' 6-13/16" 53.1 \ Rk \ -53.1    Bottom Plates: 2x6 SPF #2 10' 1" 2x6 SPF #2 8' 6-13/16" -53.1 / Rk / 53.1

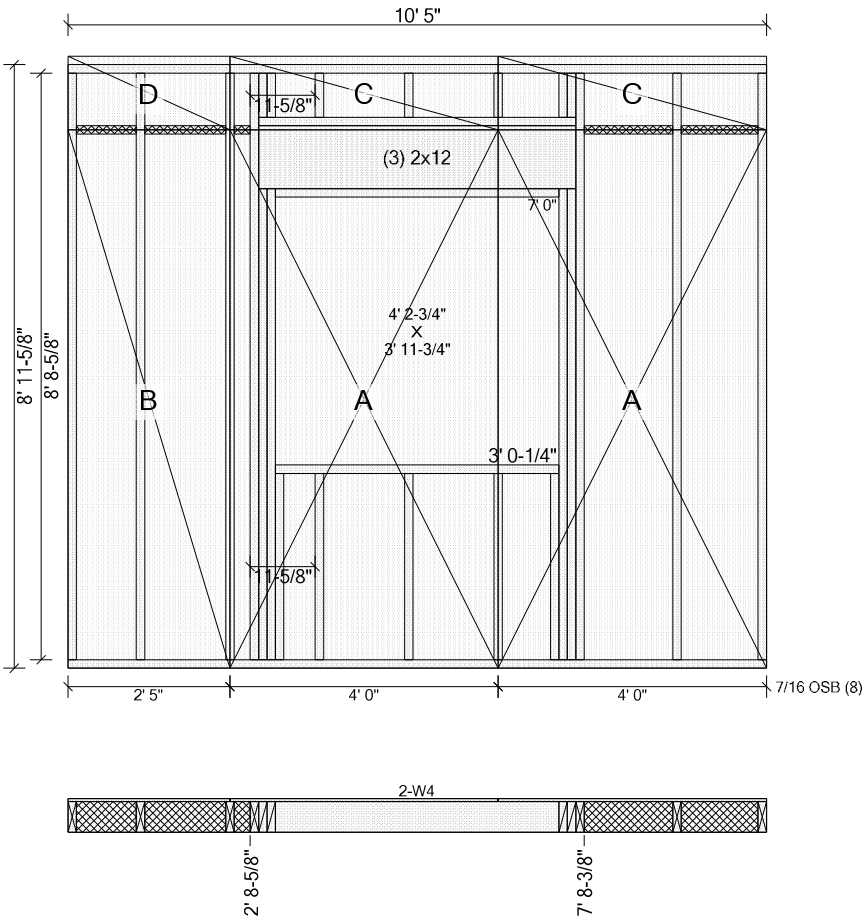
Studs: 2x6 SPF #2 9' 0-1/4" -53.1 / Rk | 2x6 SPF #2 9' 0-1/4" 53.1 \ Rk | 2x6 SPF #2 10' 8-9/16" -53.1 / Rk | 2x6 SPF #2 11' 8-5/8" 53.1 \ Rk |

Components & Subcomponents	Start	End
2x8 L (2x8 Dn)	5-7/8"	1' 2-5/8"
2-W6 (7' 0")	3' 5-1/8"	6' 7-7/8"
2x8 L (2x8 Dn)	7' 4-3/8"	8' 1-1/8"

Exterior Sheathing: 7/16 OSB (8)    Start: Flush    End: Flush

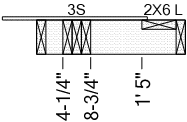
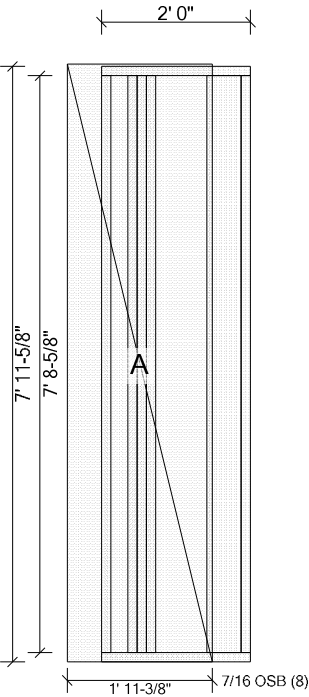
Blocking & Letin

2x6 SPF #2    Inline At: 8' 0"



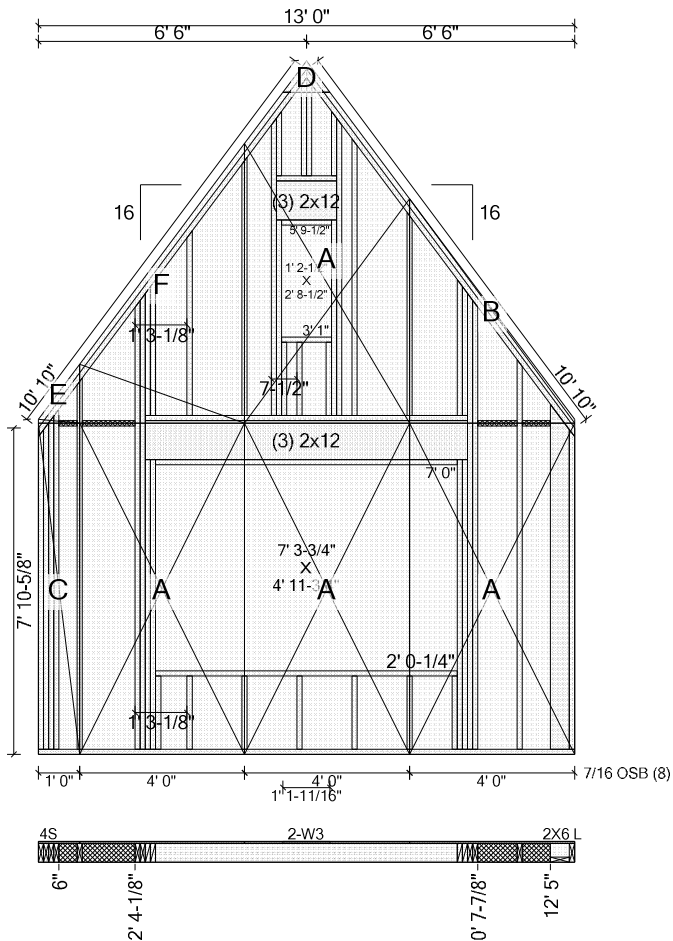
Top Plates:    2x6 SPF #2 10' 5"    Bottom Plates: 2x6 SPF #2 10' 5"  
Studs: (5) 2x6 SPF #2 8' 8-5/8"

Components & Subcomponents	Start	End
2-W4 (7' 0")	2' 8-5/8"	7' 8-3/8"
Exterior Sheathing: 7/16 OSB (8)	Start: Flush	End: Flush
Blocking & Letin		
2x6 SPF #2    Inline At: 8' 0"		



Top Plates: 2x6 SPF #2 2' 0"    Bottom Plates: 2x6 SPF #2 2' 0"  
Studs: 2x6 SPF #2 7' 8-5/8"

Components & Subcomponents	Start	End
3S	4-1/4"	8-3/4"
2X6 L (2x6 Up)	1' 5"	@ End
Exterior Sheathing: 7/16 OSB (8)	Start: Fly 5-1/2"	End: Hold 6-1/8"



Top Plates: 2x6 SPF #2 11' 0" 53.1 \ Rk \ -53.1 Bottom Plates: 2x6 SPF #2 13' 0"  
2x6 SPF #2 11' 0" -53.1 / Rk / 53.1

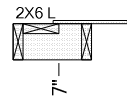
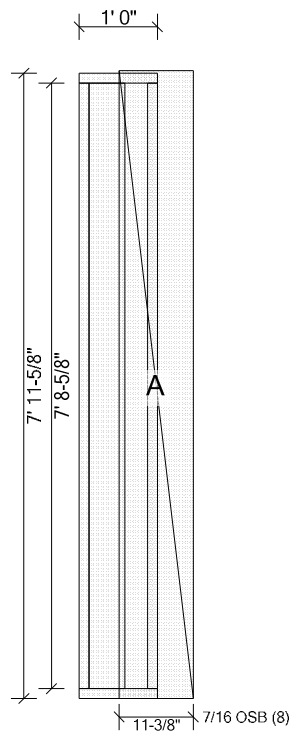
Studs: 2x6 SPF #2 9' 4-15/16" -53.1 / Rk | 2x6 SPF #2 8' 11-5/8" 53.1 \ Rk |

Components & Subcomponents	Start	End
4S	@ Start	6"
2-W3 (7' 0", 4' 8-3/4")	2' 4-1/8"	10' 7-7/8"
2X6 L (2x6 Dn)	12' 5"	@ End

Exterior Sheathing: 7/16 OSB (8)    Start: Flush    End: Flush

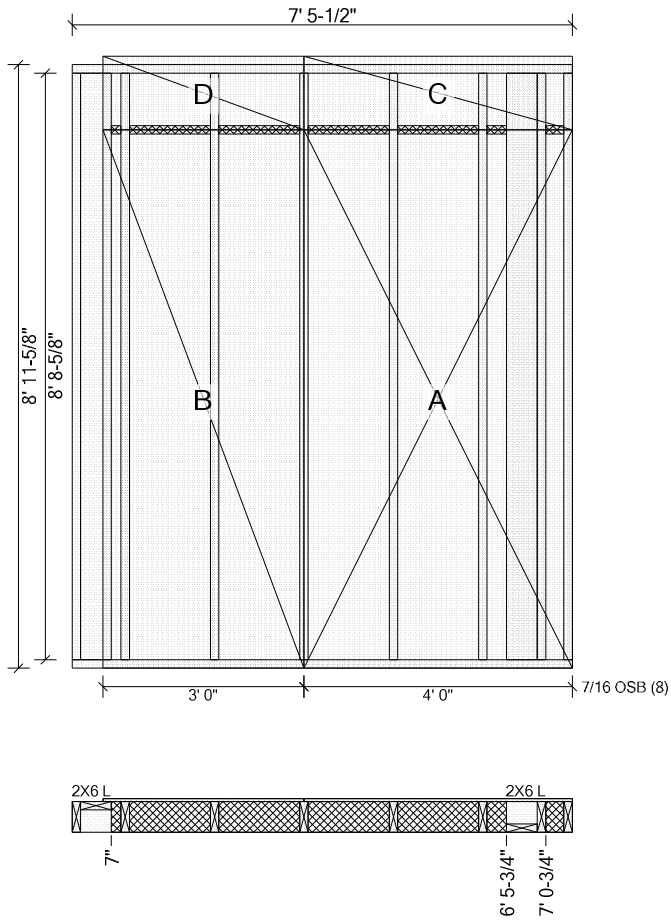
## Blocking & Letin

2x6 SPF #2 Inline At: 8' 0"



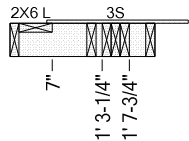
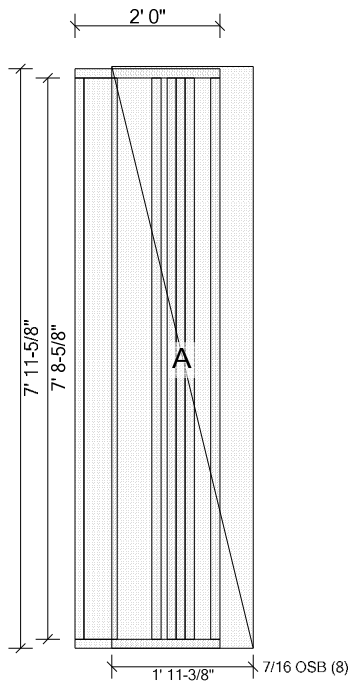
Top Plates: 2x6 SPF #2 1' 0"      Bottom Plates: 2x6 SPF #2 1' 0"  
Studs: 2x6 SPF #2 7' 8-5/8"

Components & Subcomponents	Start	End
2X6 L (2x6 Up)	@ Start	7"
Exterior Sheathing: 7/16 OSB (8)	Start: Hold 6-1/8"	End: Fly 5-1/2"



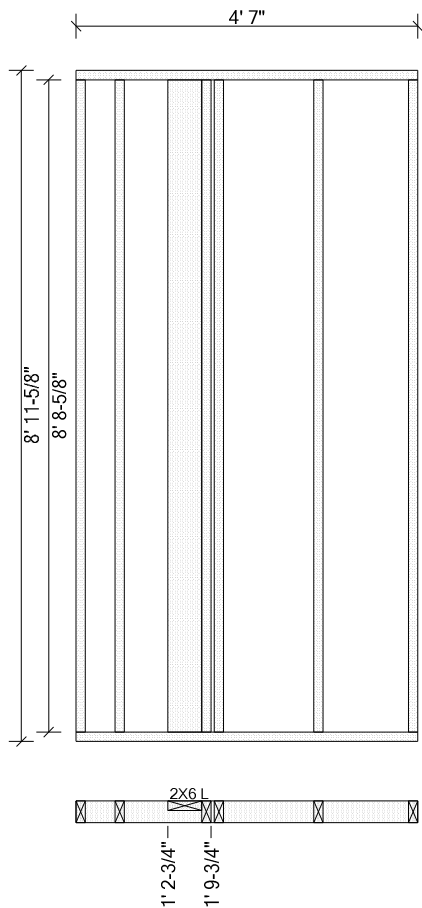
Top Plates:    2x6 SPF #2 7' 5-1/2"   Bottom Plates: 2x6 SPF #2 7' 5-1/2"  
Studs: (6) 2x6 SPF #2 8' 8-5/8"

Components & Subcomponents	Start	End
2X6 L (2x6 Up)	@ Start	7"
2X6 L (2x6 Dn)	6' 5-3/4"	7' 0-3/4"
Exterior Sheathing: 7/16 OSB (8)	Start: Hold 5-1/2"	End: Flush
Blocking & Letin		
2x6 SPF #2   Inline At: 8' 0"		



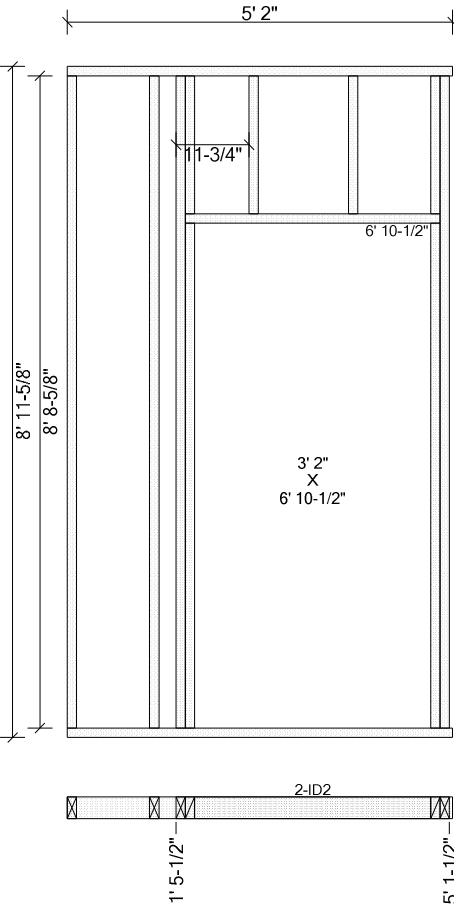
Top Plates:    2x6 SPF #2 2' 0"    Bottom Plates: 2x6 SPF #2 2' 0"  
Studs: (2) 2x6 SPF #2 7' 8-5/8"

Components & Subcomponents	Start	End
2X6 L (2x6 Up)	@ Start	7"
3S	1' 3-1/4"	1' 7-3/4"
Exterior Sheathing: 7/16 OSB (8)	Start: Hold 6-1/8"	End: Fly 5-1/2"



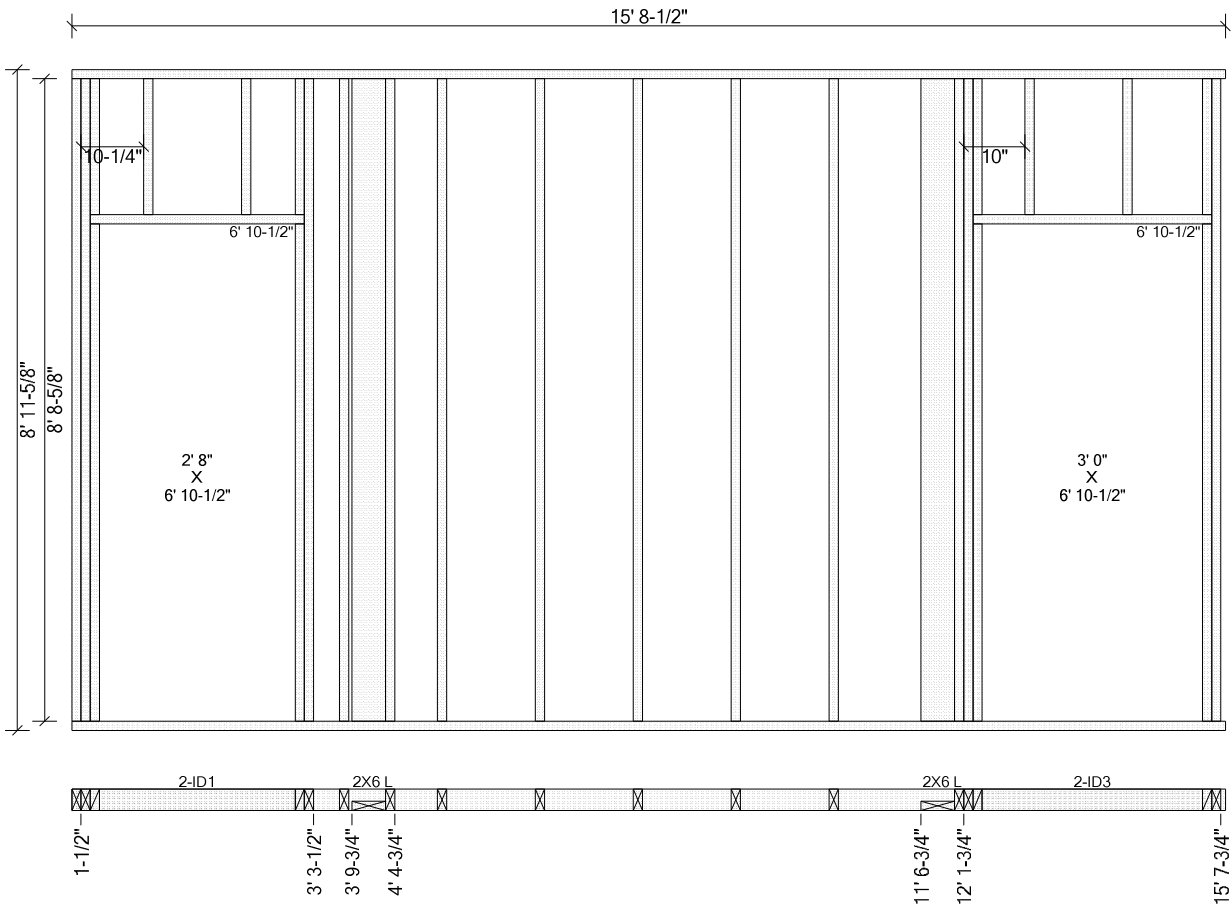
Top Plates:    2x4 SPF #2 4' 7"    Bottom Plates: 2x4 SPF #2 4' 7"  
Studs: (5) 2x4 SPF #2 8' 8-5/8"

Components & Subcomponents	Start	End
2X6 L (2x6 Up)	1' 2-3/4"	1' 9-3/4"



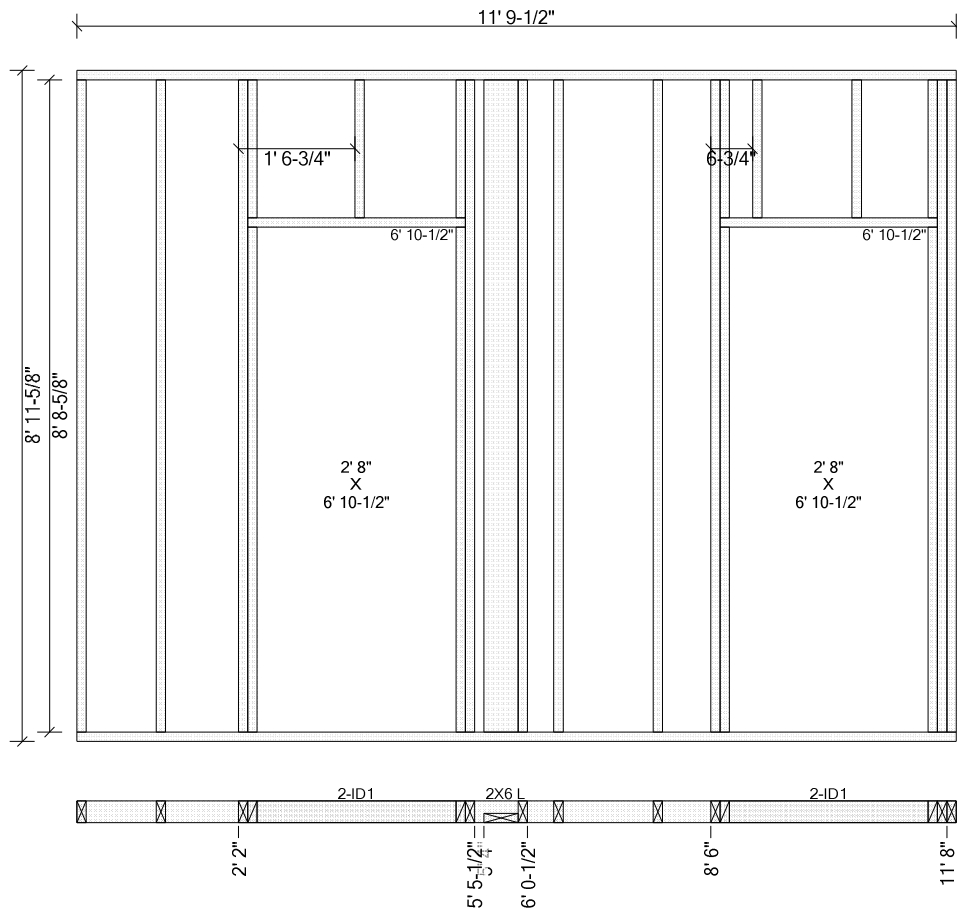
Top Plates:    2x4 SPF #2 5' 2"    Bottom Plates: 2x4 SPF #2 5' 2"  
Studs: (2) 2x4 SPF #2 8' 8-5/8"

Components & Subcomponents	Start	End
2-ID2 (6' 9")	1' 5-1/2"	5' 1-1/2"



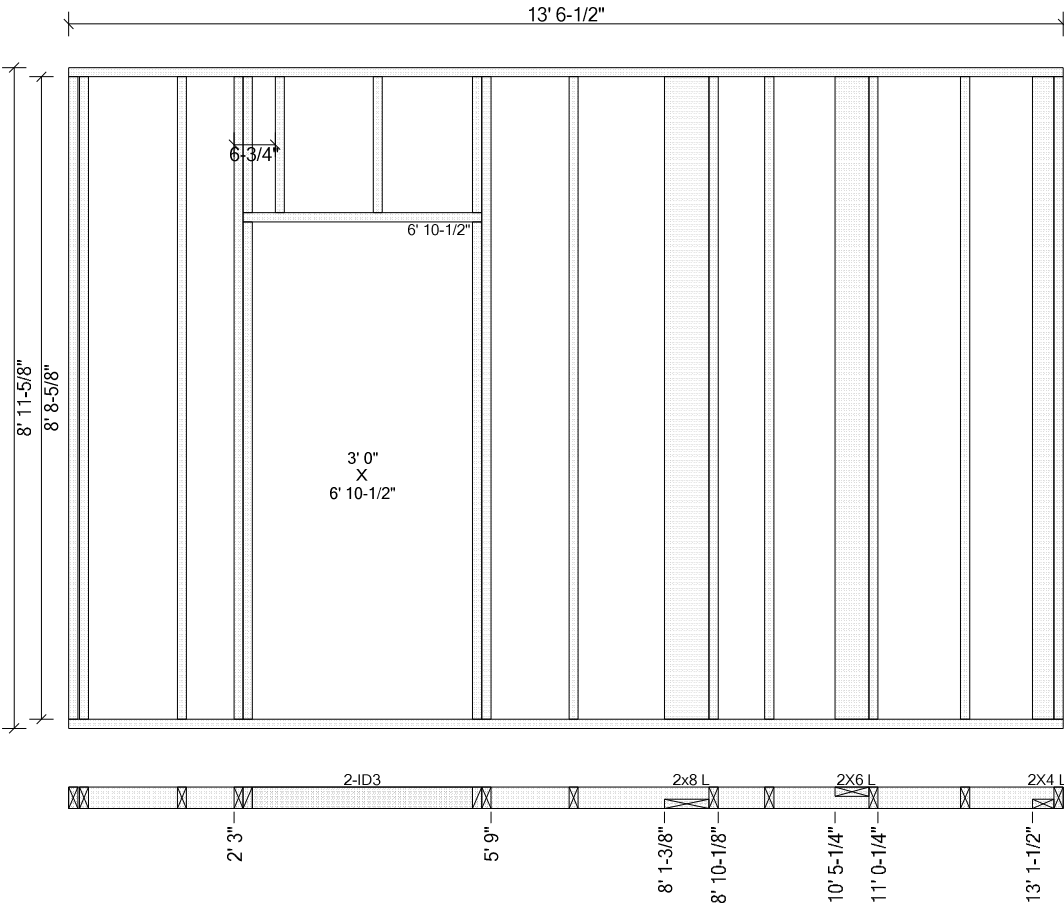
Top Plates:    2x4 SPF #2 15' 8-1/2"   Bottom Plates: 2x4 SPF #2 15' 8-1/2"  
Studs: (7) 2x4 SPF #2 8' 8-5/8"

Components & Subcomponents	Start	End
2-ID1 (6' 9")	1'-1/2"	3' 3-1/2"
2X6 L (2x6 Dn)	3' 9-3/4"	4' 4-3/4"
2X6 L (2x6 Dn)	11' 6-3/4"	12' 1-3/4"
2-ID3 (6' 9")	12' 1-3/4"	15' 7-3/4"



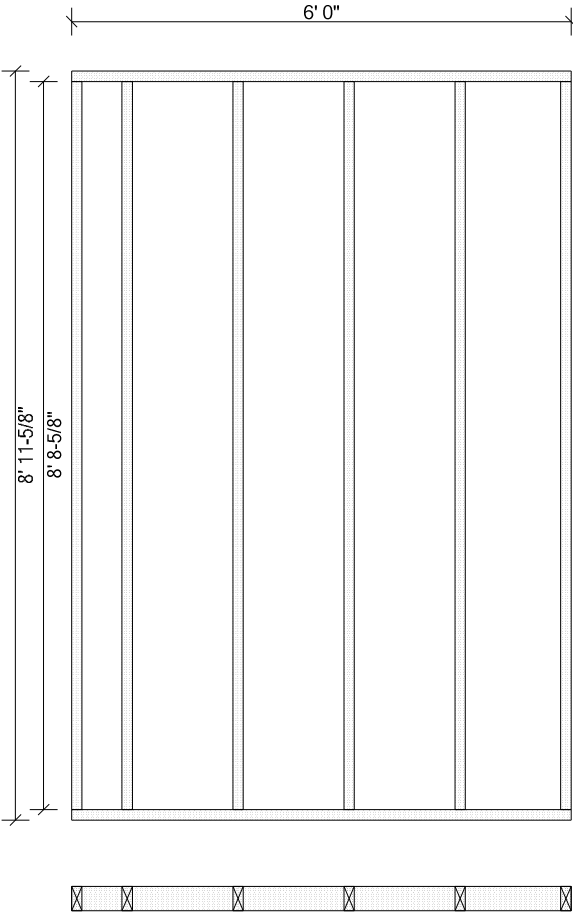
Top Plates:    2x4 SPF #2 11' 9-1/2"    Bottom Plates: 2x4 SPF #2 11' 9-1/2"  
Studs: (5) 2x4 SPF #2 8' 8-5/8"

Components & Subcomponents	Start	End
2-ID1 (6' 9")	2' 2"	5' 4"
2X6 L (2x6 Dn)	5' 5-1/2"	6' 0-1/2"
2-ID1 (6' 9")	8' 6"	11' 8"

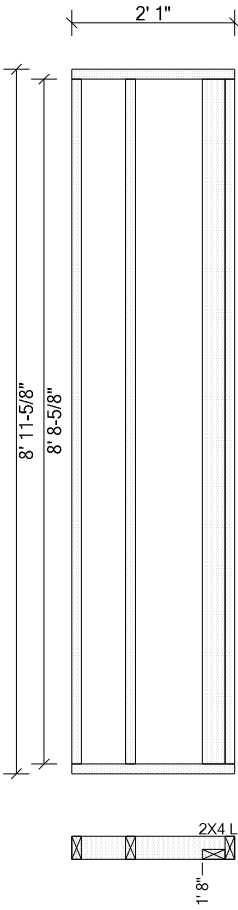


Top Plates:    2x4 SPF #2 13' 6-1/2"   Bottom Plates: 2x4 SPF #2 13' 6-1/2"  
Studs: (6) 2x4 SPF #2 8' 8-5/8"

Components & Subcomponents	Start	End
2-ID3 (6' 9")	2' 3"	5' 9"
2x8 L (2x8 Dn)	8' 1-3/8"	8' 10-1/8"
2X6 L (2x6 Up)	10' 5-1/4"	11' 0-1/4"
2X4 L (2x4 Dn)	13' 1-1/2"	@ End

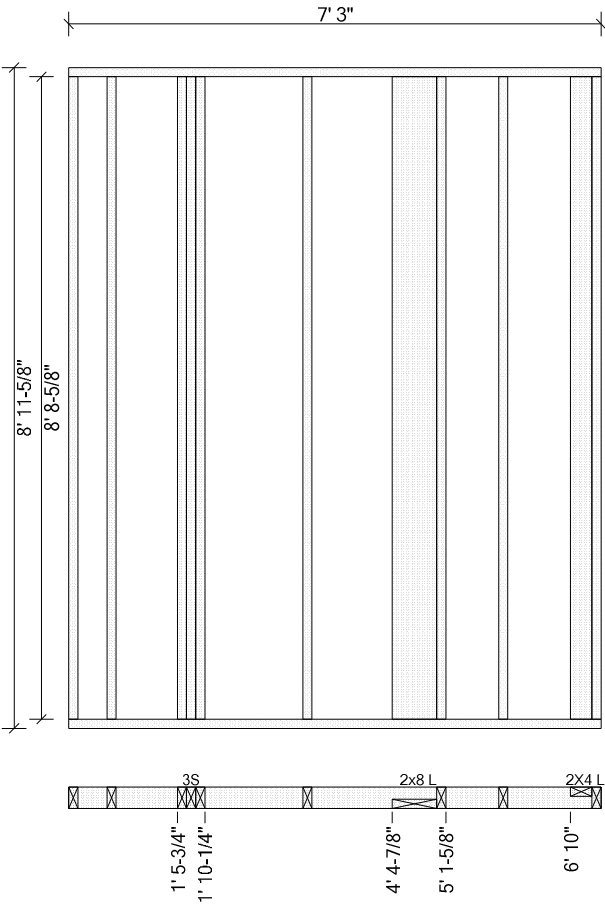


Top Plates:     2x4 SPF #2 6' 0"     Bottom Plates: 2x4 SPF #2 6' 0"  
Studs: (6) 2x4 SPF #2 8' 8-5/8"



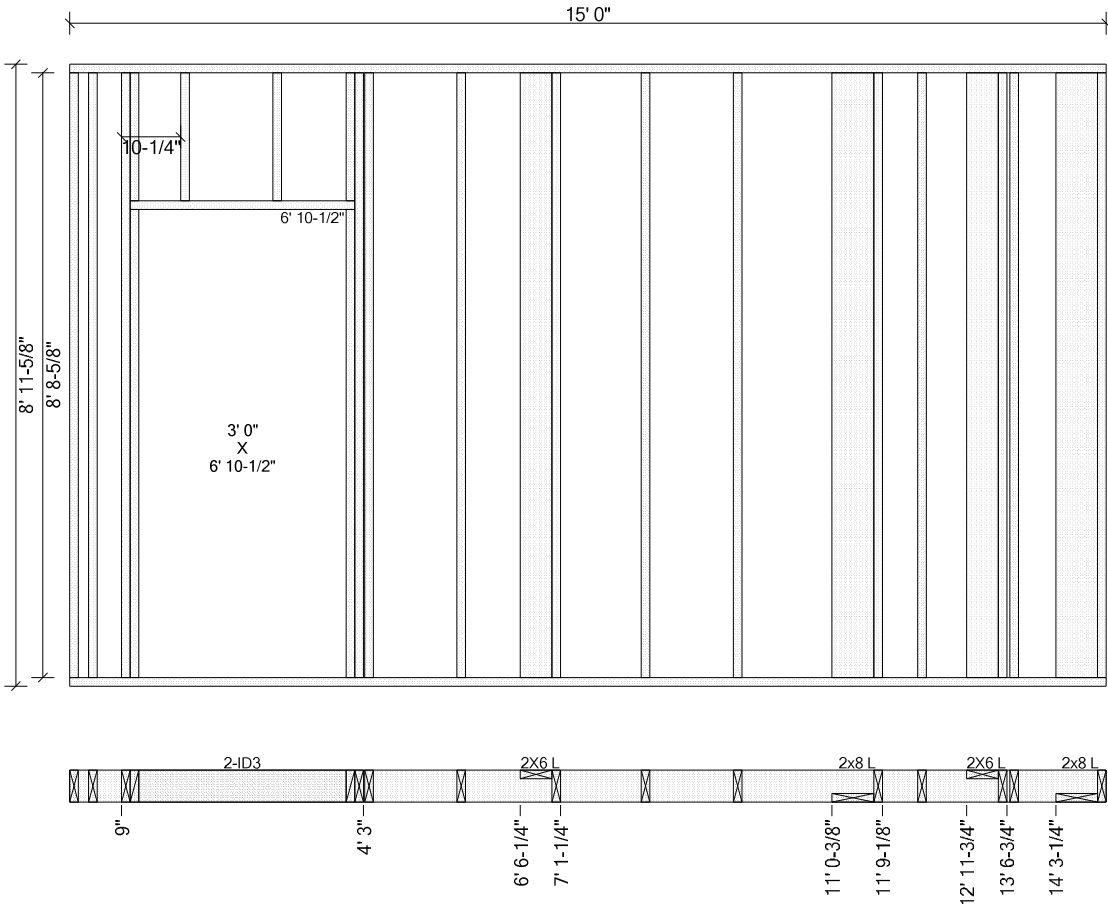
Top Plates:    2x4 SPF #2 2' 1"    Bottom Plates: 2x4 SPF #2 2' 1"  
Studs: (2) 2x4 SPF #2 8' 8-5/8"

Components & Subcomponents	Start	End
2X4 L (2x4 Dn)	1' 8"	@ End



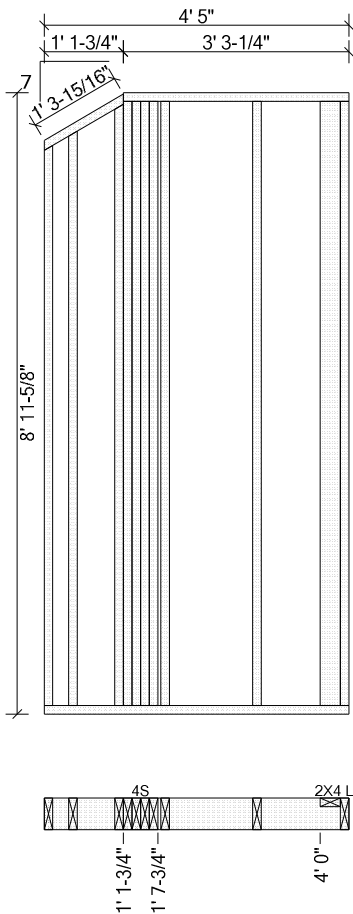
Top Plates:    2x4 SPF #2 7' 3"    Bottom Plates: 2x4 SPF #2 7' 3"  
Studs: (4) 2x4 SPF #2 8' 8-5/8"

Components & Subcomponents	Start	End
3S	1' 5-3/4"	1' 10-1/4"
2x8 L (2x8 Dn)	4' 4-7/8"	5' 1-5/8"
2X4 L (2x4 Up)	6' 10"	@ End



Top Plates:    2x6 SPF #2 15' 0"    Bottom Plates: 2x6 SPF #2 15' 0"  
Studs: (8) 2x6 SPF #2 8' 8-5/8"

Components & Subcomponents	Start	End
2-ID3 (6' 9")	9"	4' 3"
2X6 L (2x6 Up)	6' 6-1/4"	7' 1-1/4"
2x8 L (2x8 Dn)	11' 0-3/8"	11' 9-1/8"
2X6 L (2x6 Up)	12' 11-3/4"	13' 6-3/4"
2x8 L (2x8 Dn)	14' 3-1/4"	@ End



Top Plates: 2x6 SPF #2 3' 3-1/4"

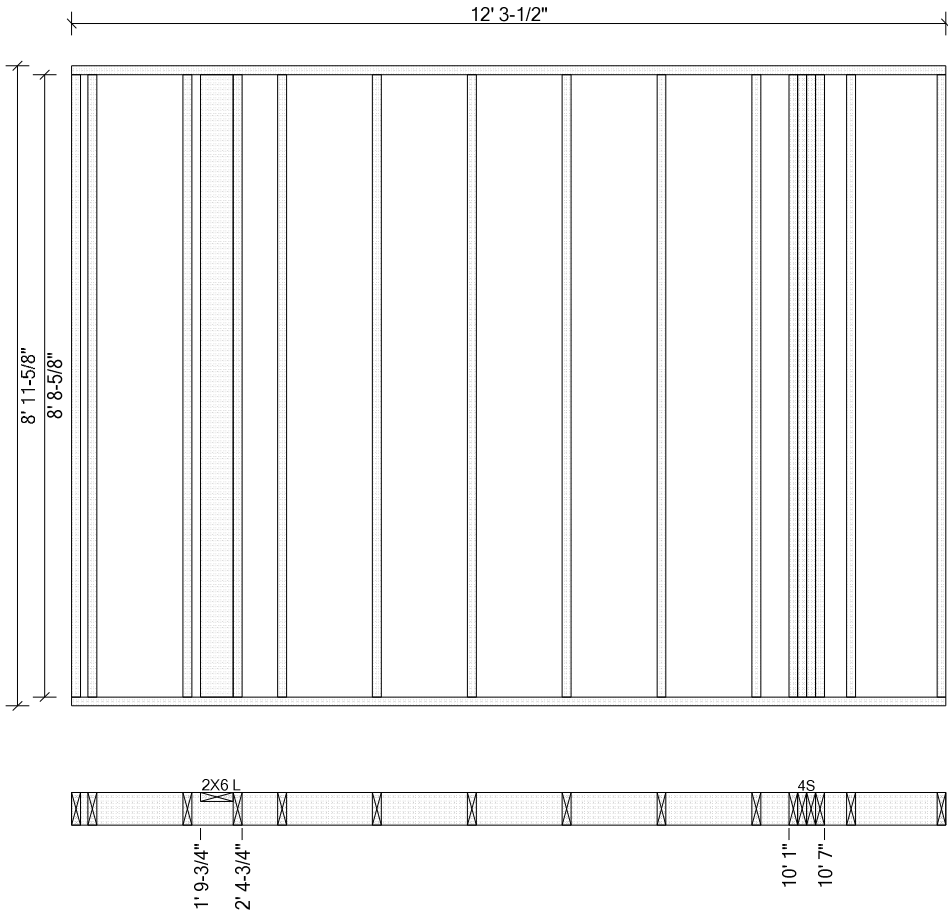
2x6 SPF #2 1' 4-13/16" -30.3 / Rk / 30.3

Bottom Plates: 2x6 SPF #2 4' 5"

Studs: 2x6 SPF #2 8' 1" 30.3 \ Rk | 2x6 SPF #2 8' 8-1/8" 30.3 \ Rk |

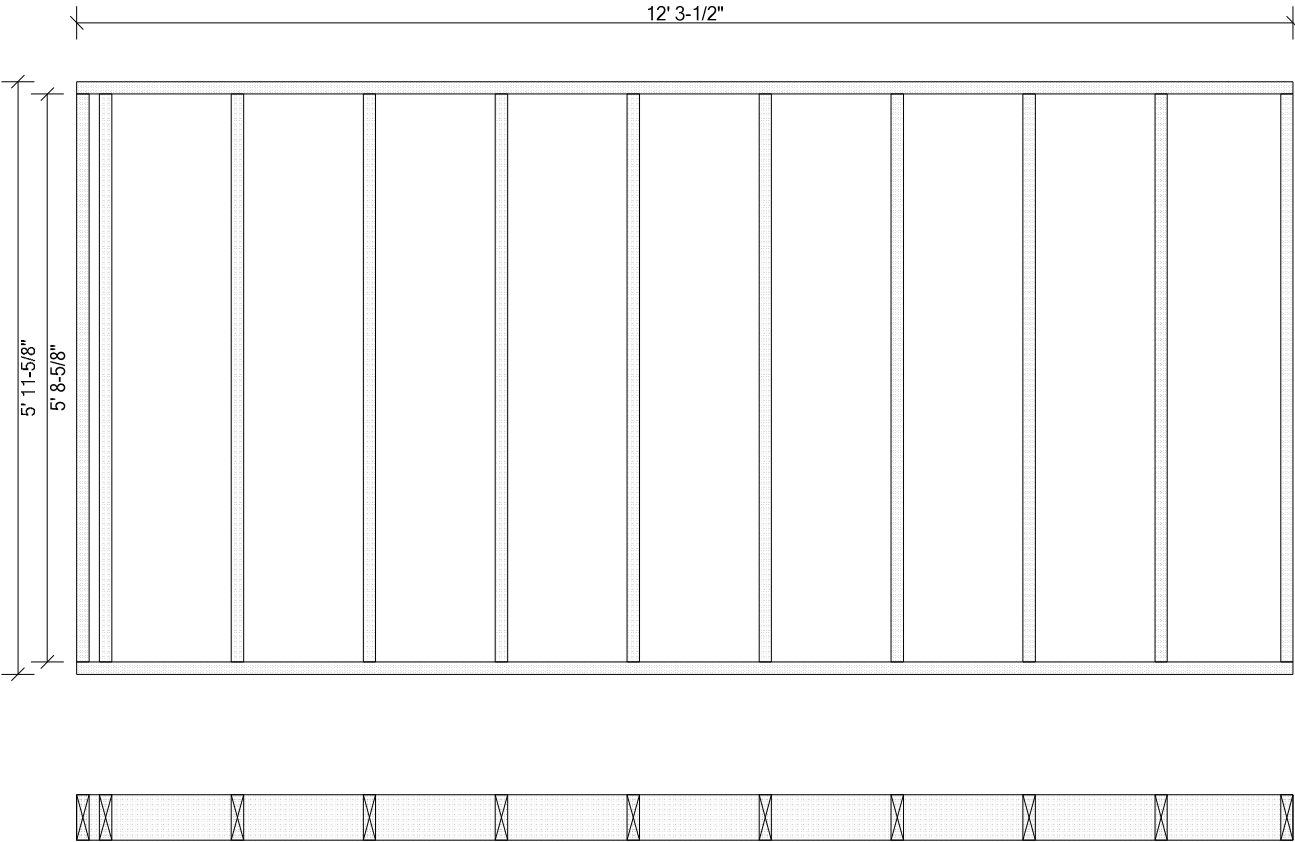
(2) 2x6 SPF #2 8' 8-5/8" 2x6 SPF #2 8' 3-1/2" 30.3 \ Rk |

Components & Subcomponents	Start	End
4S	1' 1-3/4"	1' 7-3/4"
2X4 L (2x4 Up)	4' 0"	@ End

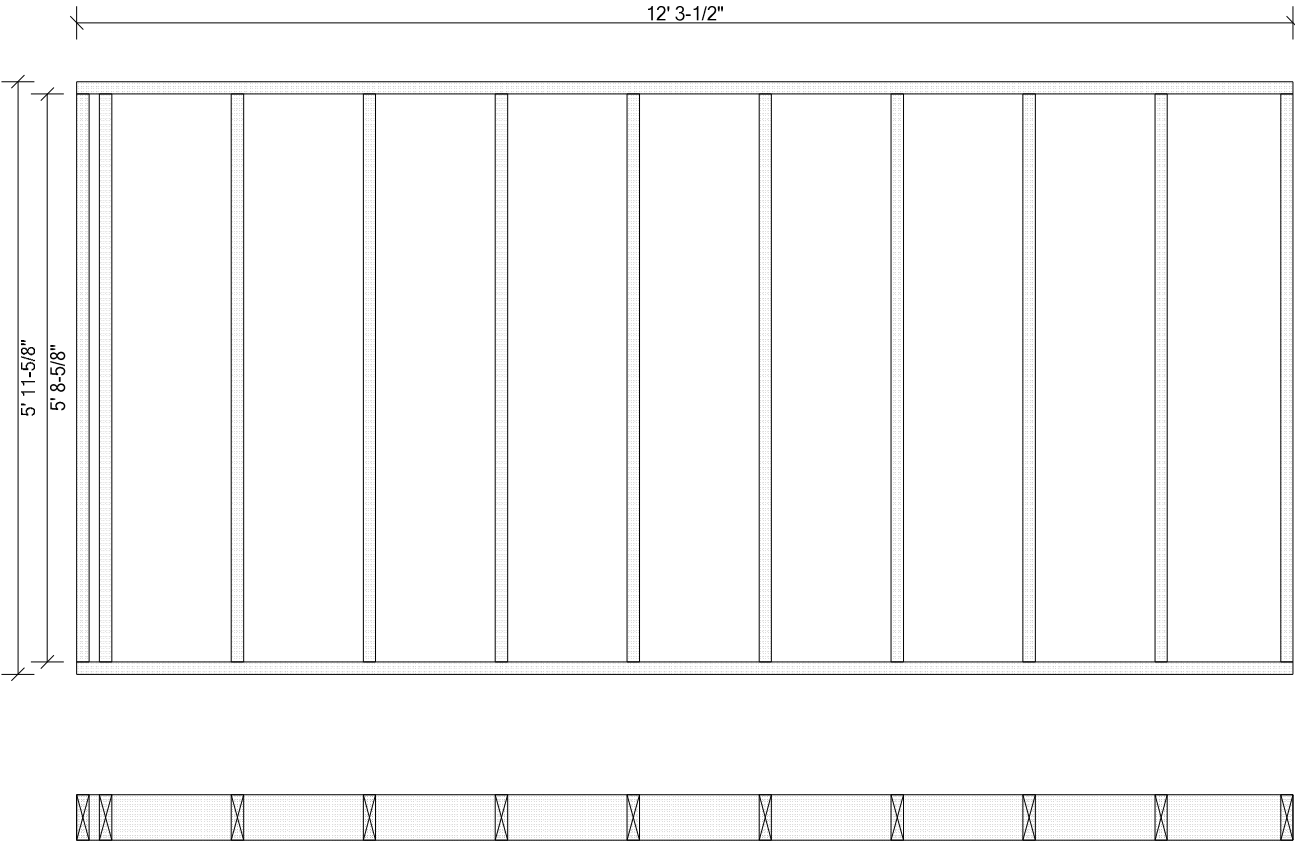


Top Plates:      2x6 SPF #2 12' 3-1/2"   Bottom Plates: 2x6 SPF #2 12' 3-1/2"  
Studs: (11) 2x6 SPF #2 8' 8-5/8"

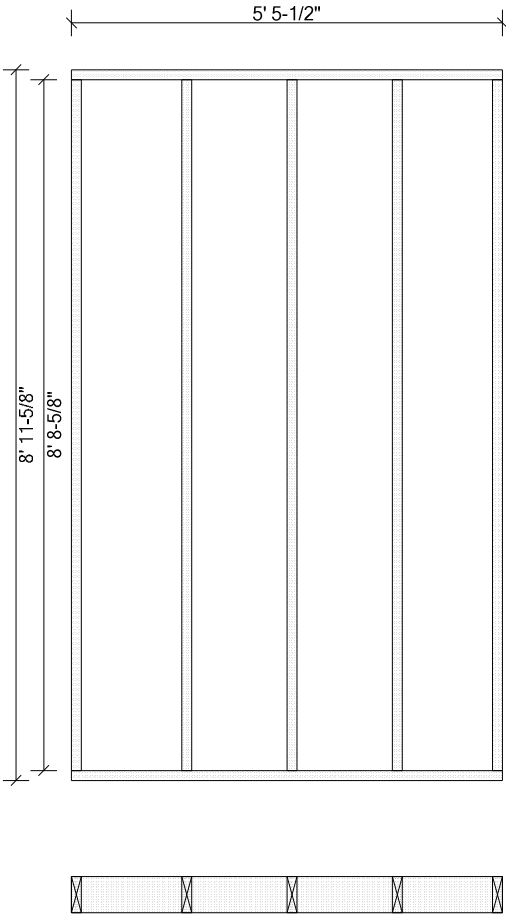
Components & Subcomponents	Start	End
2X6 L (2x6 Up)	1' 9-3/4"	2' 4-3/4"
4S	10' 1"	10' 7"



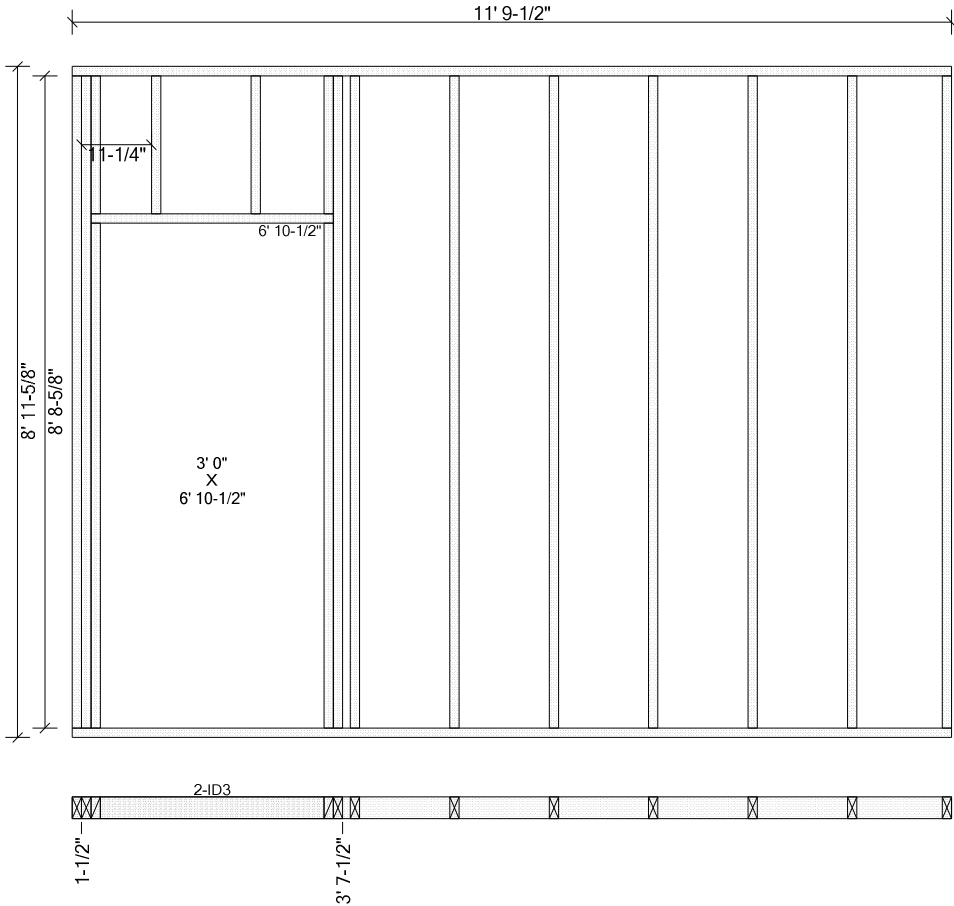
Top Plates:        2x6 SPF #2 12' 3-1/2"    Bottom Plates: 2x6 SPF #2 12' 3-1/2"  
Studs: (11) 2x6 SPF #2 5' 8-5/8"



Top Plates:        2x6 SPF #2 12' 3-1/2"    Bottom Plates: 2x6 SPF #2 12' 3-1/2"  
Studs: (11) 2x6 SPF #2 5' 8-5/8"

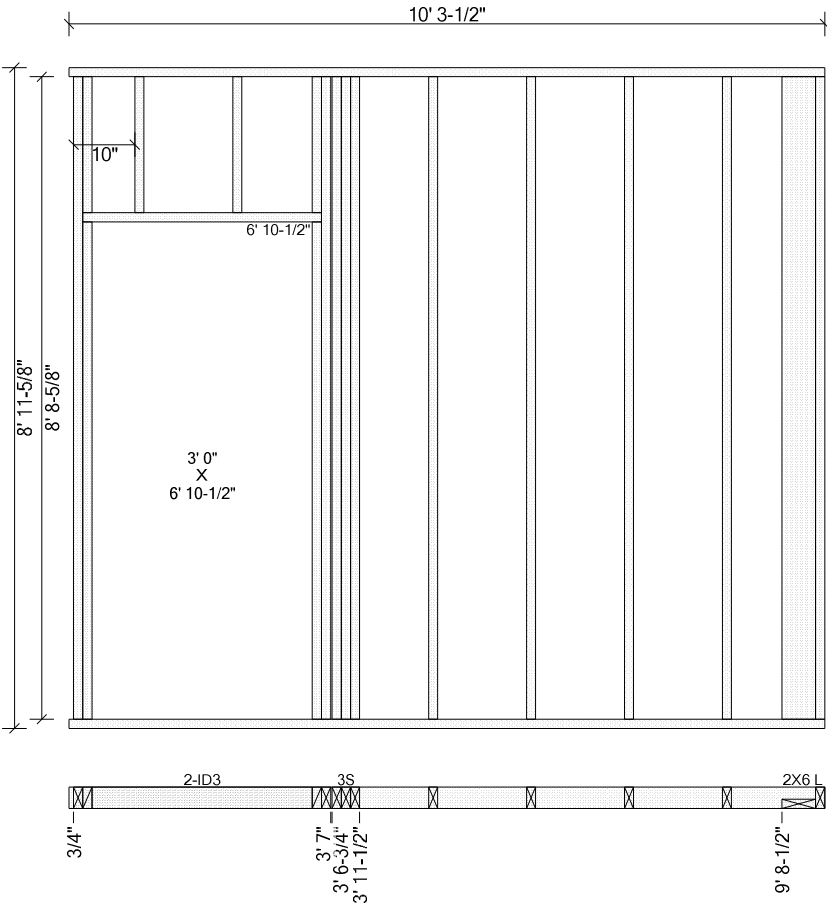


Top Plates:      2x6 SPF #2 5' 5-1/2"   Bottom Plates: 2x6 SPF #2 5' 5-1/2"  
Studs: (5) 2x6 SPF #2 8' 8-5/8"



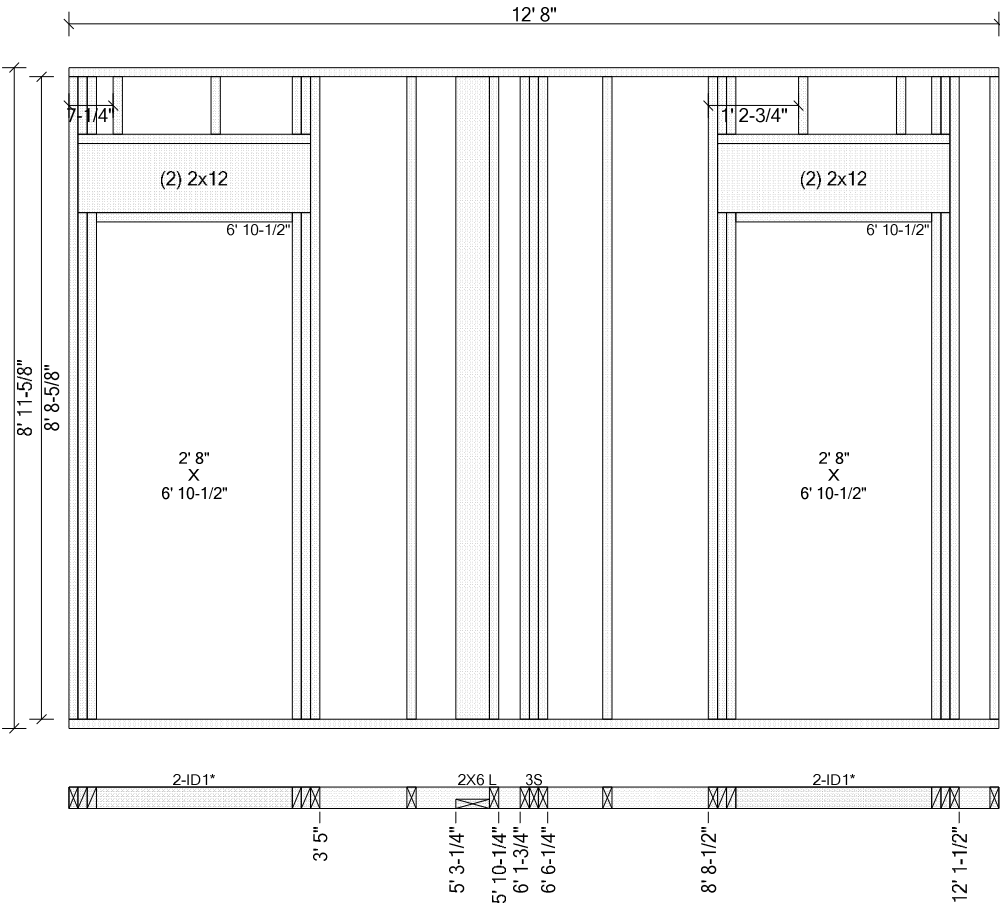
Top Plates:    2x4 SPF #2 11' 9-1/2"   Bottom Plates: 2x4 SPF #2 11' 9-1/2"  
Studs: (8) 2x4 SPF #2 8' 8-5/8"

Components & Subcomponents	Start	End
2-ID3 (6' 9")	1-1/2"	3' 7-1/2"



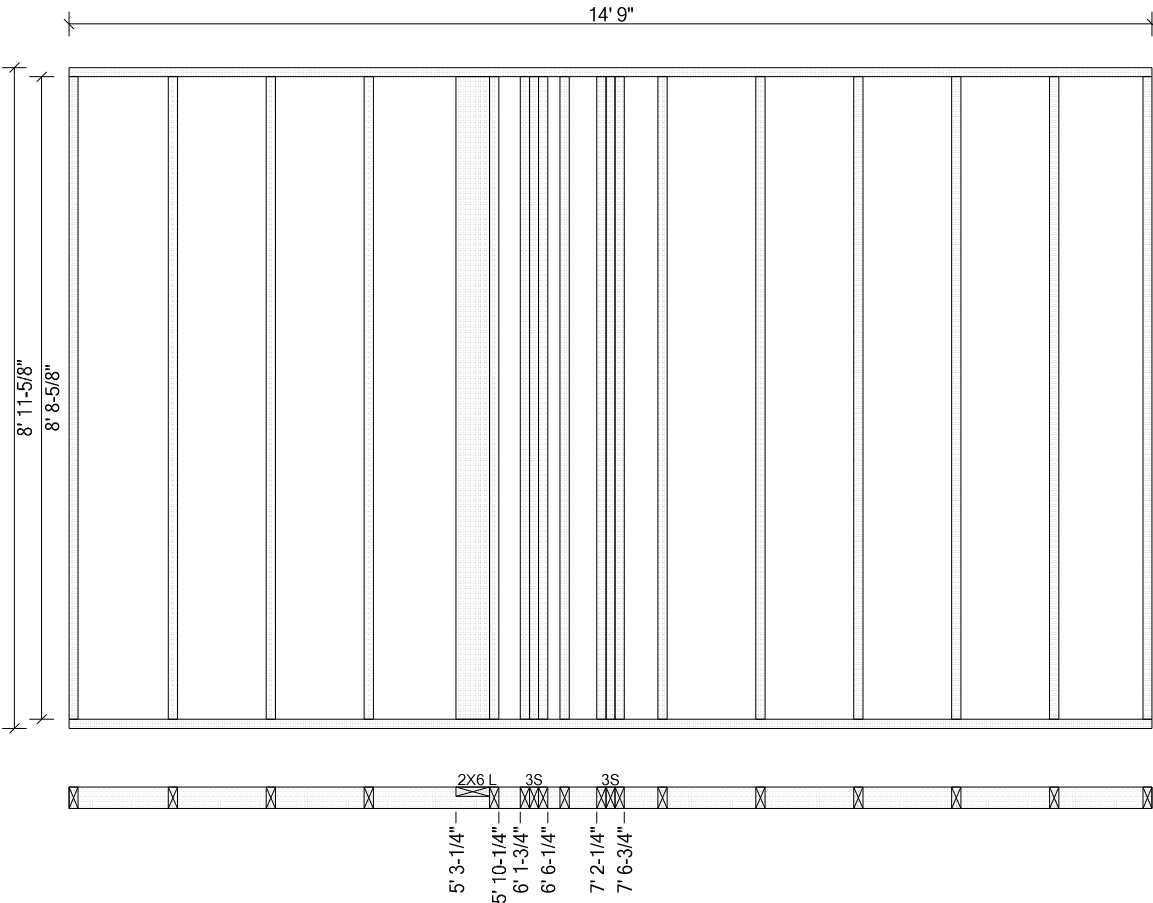
Top Plates:    2x4 SPF #2 10' 3-1/2"    Bottom Plates: 2x4 SPF #2 10' 3-1/2"  
 Studs: (4) 2x4 SPF #2 8' 8-5/8"

Components & Subcomponents	Start	End
2-ID3 (6' 9")	3/4"	3' 6-3/4"
3S	3' 7"	3' 11-1/2"
2X6 L (2x6 Dn)	9' 8-1/2"	@ End



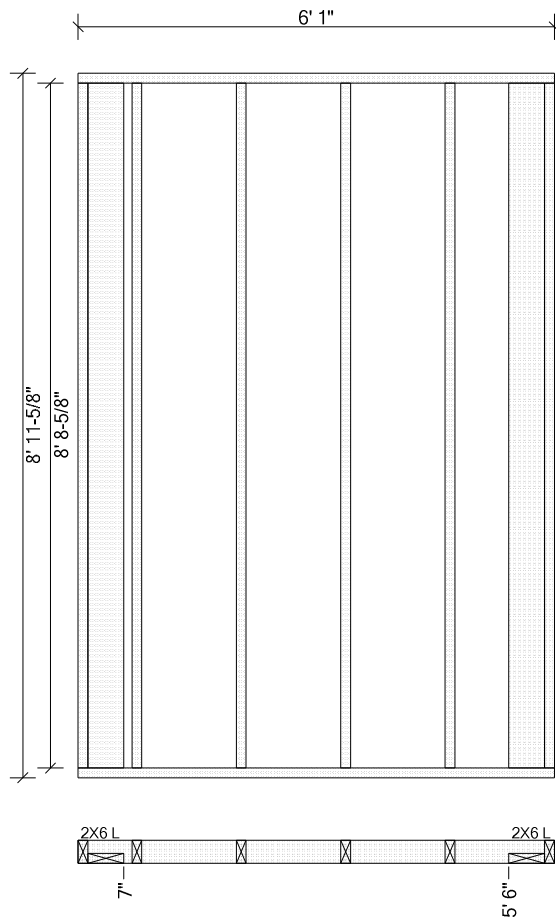
Top Plates:    2x4 SPF #2 12' 8"    Bottom Plates: 2x4 SPF #2 12' 8"  
Studs: (3) 2x4 SPF #2 8' 8-5/8"

Components & Subcomponents	Start	End
2-ID1* (6' 10-1/2")	@ Start	3' 5"
2X6 L (2x6 Dn)	5' 3-1/4"	5' 10-1/4"
3S	6' 1-3/4"	6' 6-1/4"
2-ID1* (6' 10-1/2")	8' 8-1/2"	12' 1-1/2"



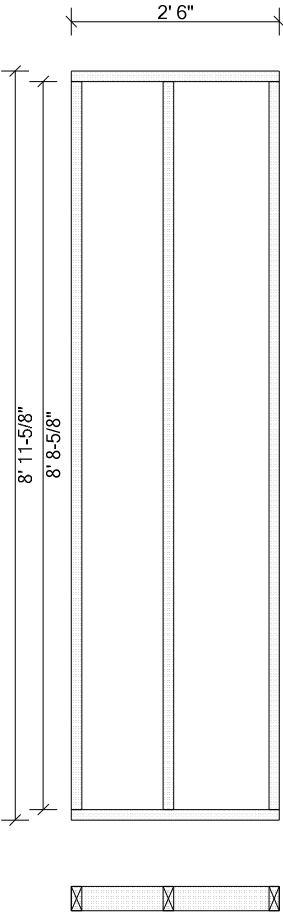
Top Plates:        2x4 SPF #2 14' 9"        Bottom Plates: 2x4 SPF #2 14' 9"  
Studs: (11) 2x4 SPF #2 8' 8-5/8"

Components & Subcomponents	Start	End
2X6 L (2x6 Up)	5' 3-1/4"	5' 10-1/4"
3S	6' 1-3/4"	6' 6-1/4"
3S	7' 2-1/4"	7' 6-3/4"

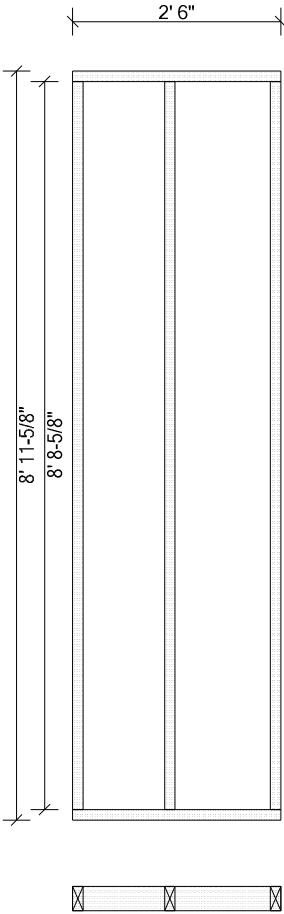


Top Plates:    2x4 SPF #2 6' 1"    Bottom Plates: 2x4 SPF #2 6' 1"  
Studs: (4) 2x4 SPF #2 8' 8-5/8"

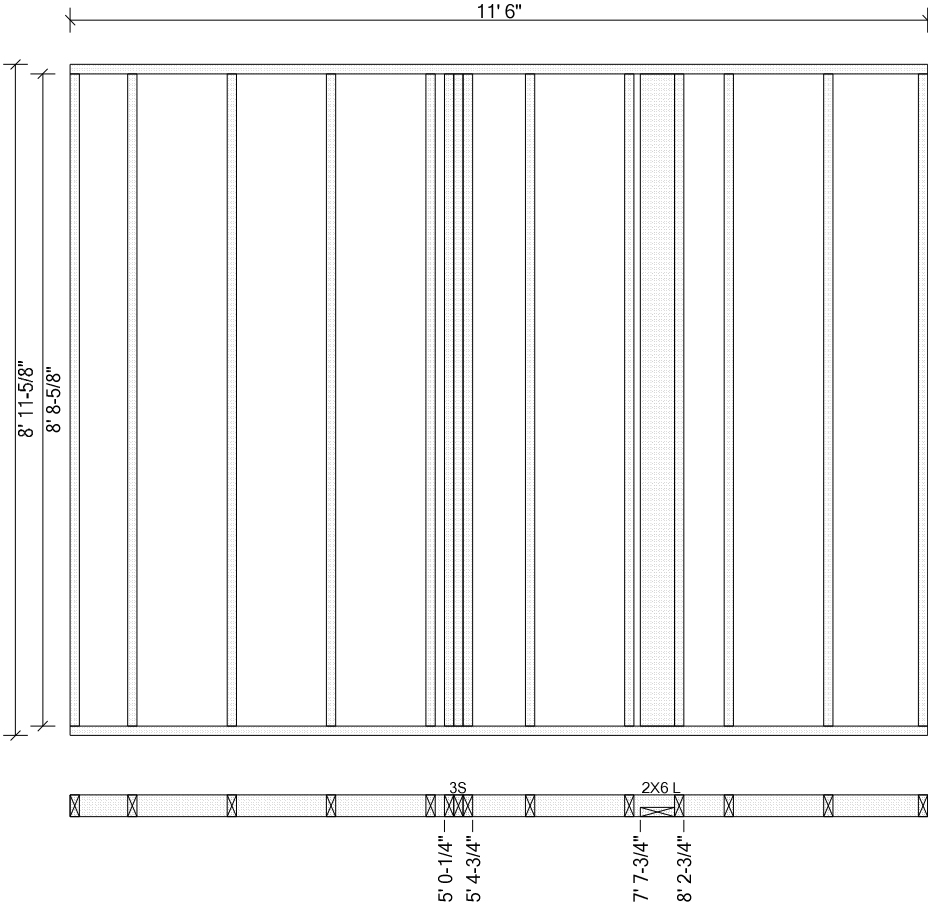
Components & Subcomponents	Start	End
2X6 L (2x6 Dn)	@ Start	7"
2X6 L (2x6 Dn)	5' 6"	@ End



Top Plates:      2x4 SPF #2 2' 6"      Bottom Plates: 2x4 SPF #2 2' 6"  
Studs: (3) 2x4 SPF #2 8' 8-5/8"

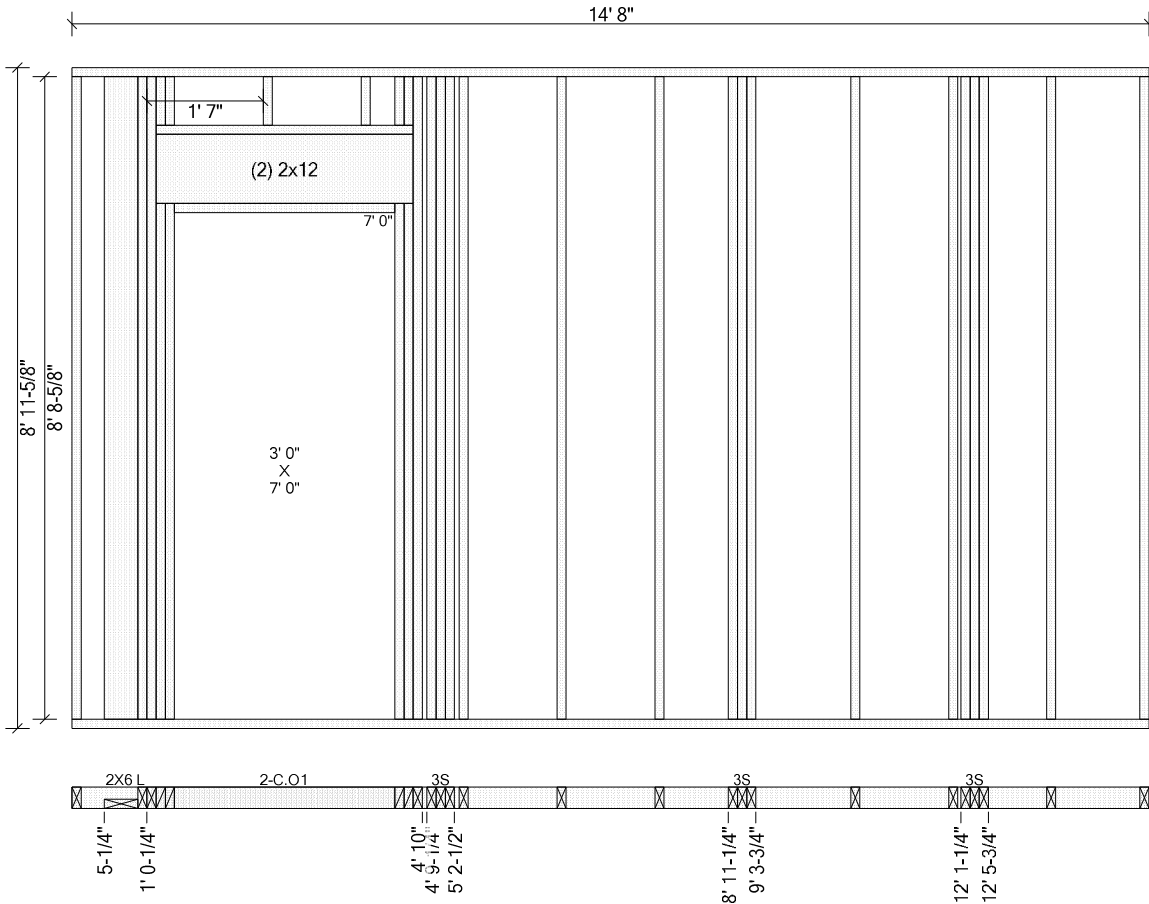


Top Plates:      2x4 SPF #2 2' 6"      Bottom Plates: 2x4 SPF #2 2' 6"  
Studs: (3) 2x4 SPF #2 8' 8-5/8"



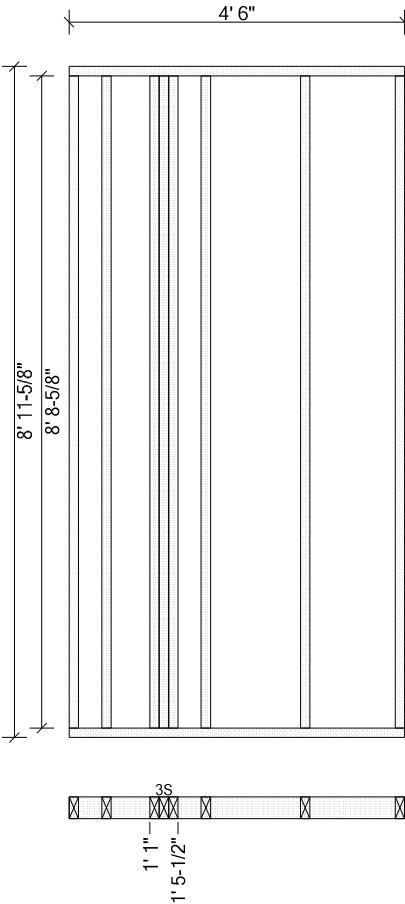
Top Plates:        2x4 SPF #2 11' 6"        Bottom Plates: 2x4 SPF #2 11' 6"  
Studs: (10) 2x4 SPF #2 8' 8-5/8"

Components & Subcomponents	Start	End
3S	5' 0-1/4"	5' 4-3/4"
2X6 L (2x6 Dn)	7' 7-3/4"	8' 2-3/4"



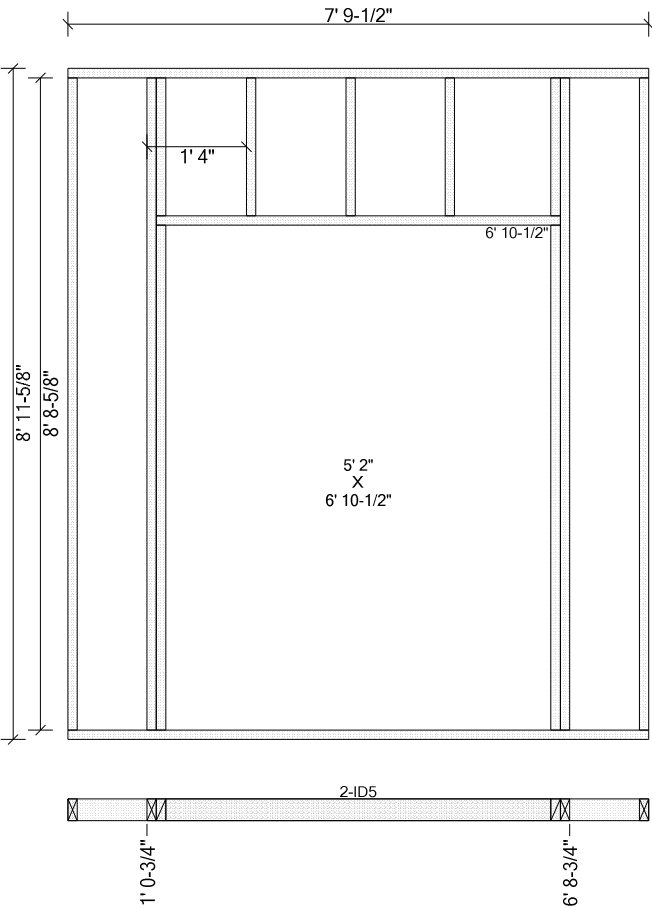
Top Plates:    2x4 SPF #2 14' 8"    Bottom Plates: 2x4 SPF #2 14' 8"  
 Studs: (8) 2x4 SPF #2 8' 8-5/8"

Components & Subcomponents	Start	End
2X6 L (2x6 Dn)	5-1/4"	1' 0-1/4"
2-C.O1 (7' 0")	1' 0-1/4"	4' 9-1/4"
3S	4' 10"	5' 2-1/2"
3S	8' 11-1/4"	9' 3-3/4"
3S	12' 1-1/4"	12' 5-3/4"



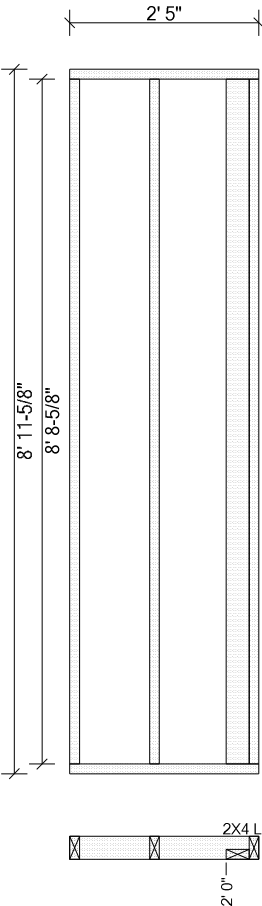
Top Plates:    2x4 SPF #2 4' 6"      Bottom Plates: 2x4 SPF #2 4' 6"  
Studs: (5) 2x4 SPF #2 8' 8-5/8"

Components & Subcomponents	Start	End
3S	1' 1"	1' 5-1/2"



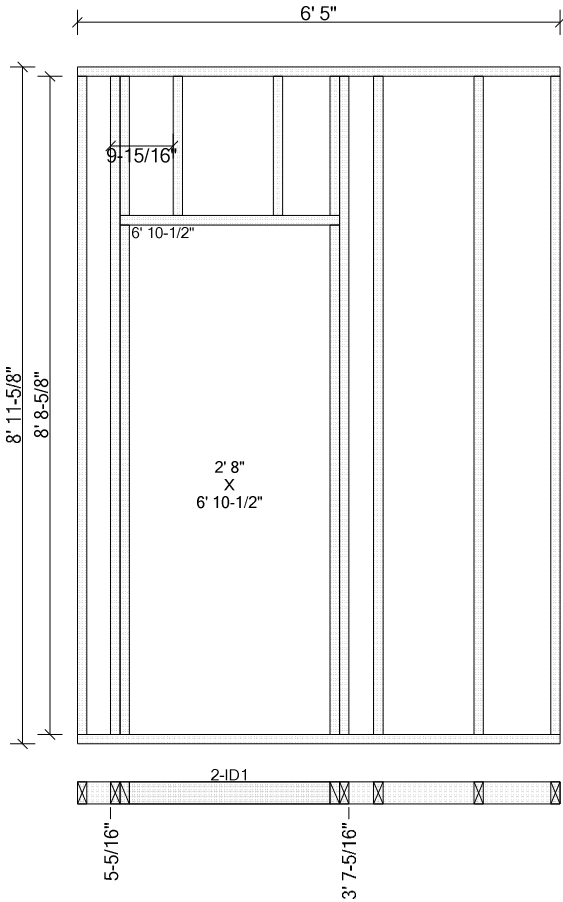
Top Plates:    2x4 SPF #2 7' 9-1/2"    Bottom Plates: 2x4 SPF #2 7' 9-1/2"  
Studs: (2) 2x4 SPF #2 8' 8-5/8"

Components & Subcomponents	Start	End
2-ID5 (6' 9")	1' 0-3/4"	6' 8-3/4"



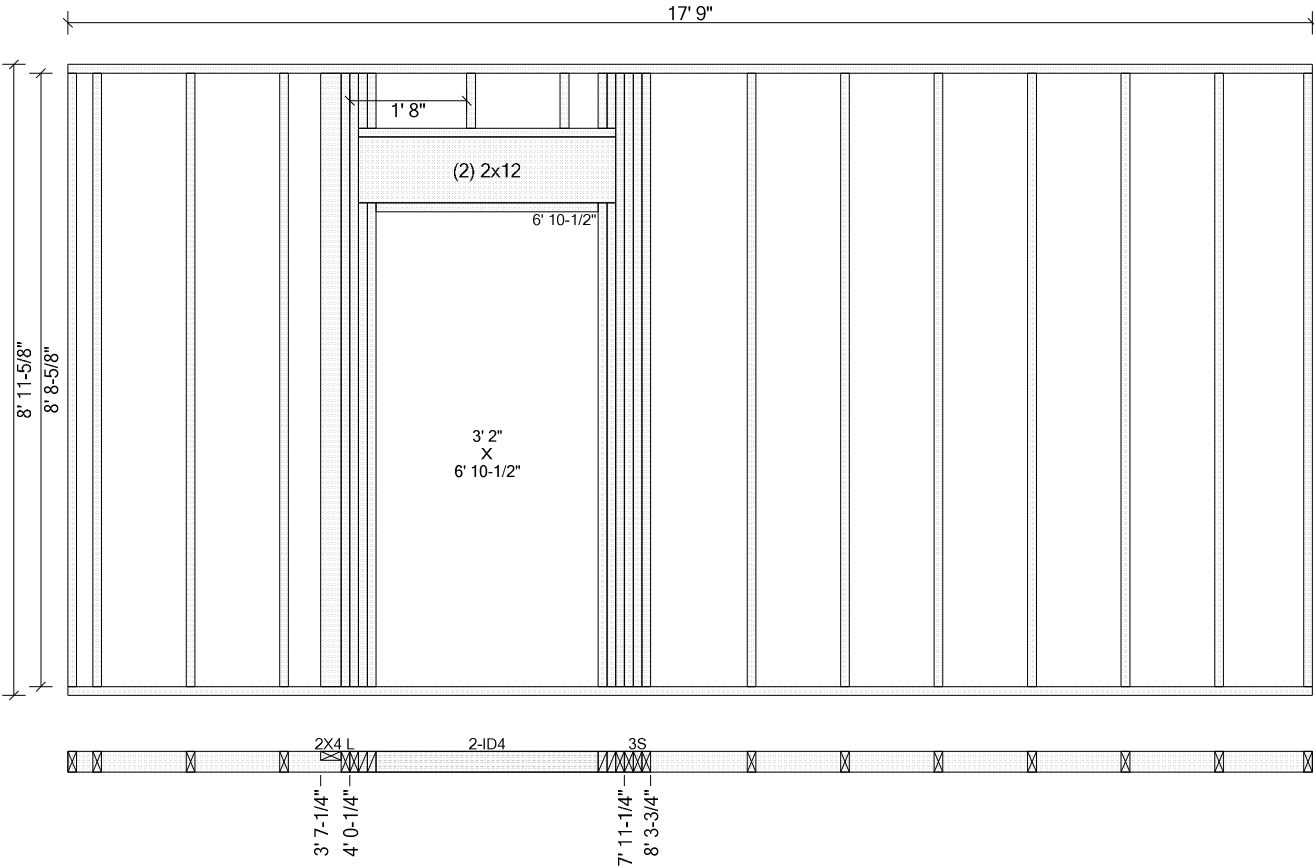
Top Plates:    2x4 SPF #2 2' 5"    Bottom Plates: 2x4 SPF #2 2' 5"  
Studs: (2) 2x4 SPF #2 8' 8-5/8"

Components & Subcomponents	Start	End
2X4 L (2x4 Dn)	2' 0"	@ End



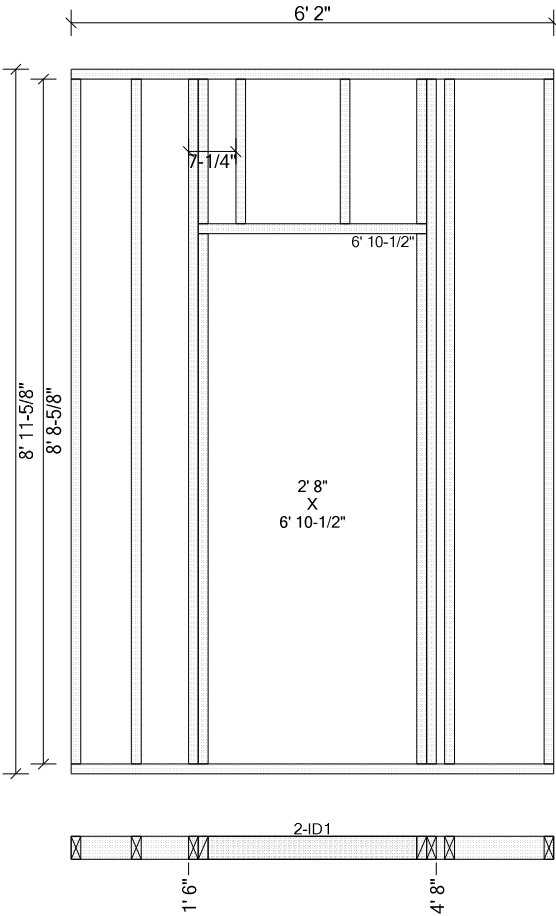
Top Plates:    2x4 SPF #2 6' 5"    Bottom Plates: 2x4 SPF #2 6' 5"  
Studs: (4) 2x4 SPF #2 8' 8-5/8"

Components & Subcomponents	Start	End
2-ID1 (6' 9")	5-5/16"	3' 7-5/16"



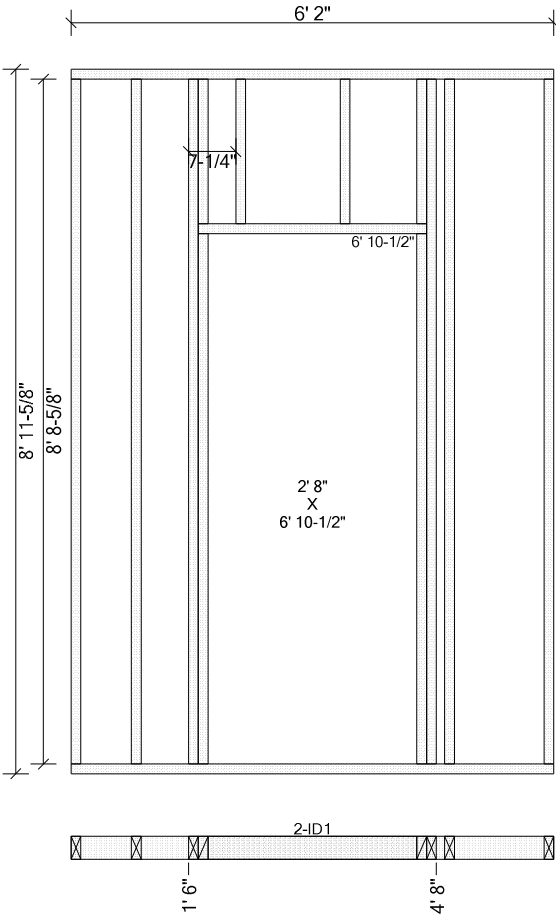
Top Plates:      2x4 SPF #2 17' 9"      Bottom Plates: 2x4 SPF #2 17' 9"  
Studs: (11) 2x4 SPF #2 8' 8-5/8"

Components & Subcomponents	Start	End
2X4 L (2x4 Up)	3' 7-1/4"	4' 0-1/4"
2-ID4 (6' 10-1/2")	4' 0-1/4"	7' 11-1/4"
3S	7' 11-1/4"	8' 3-3/4"



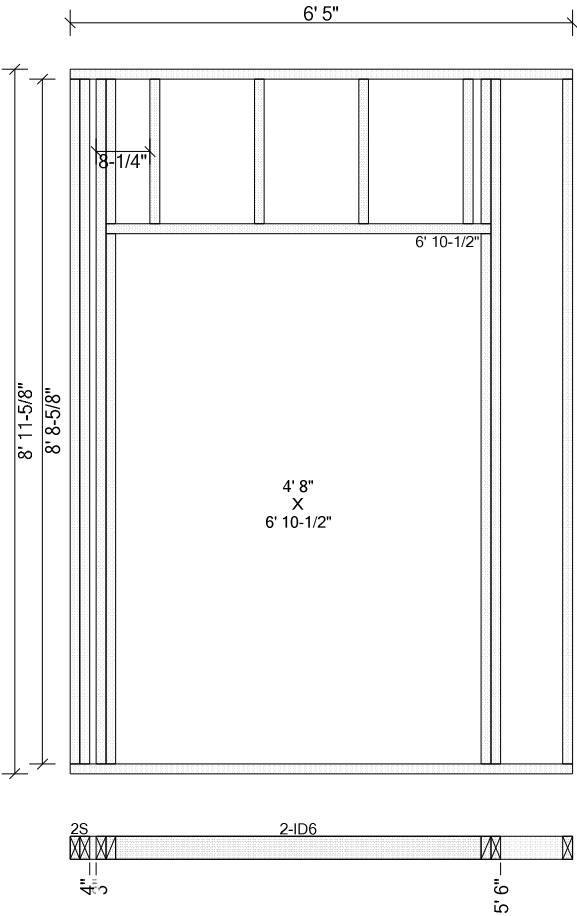
Top Plates:    2x4 SPF #2 6' 2"    Bottom Plates: 2x4 SPF #2 6' 2"  
Studs: (4) 2x4 SPF #2 8' 8-5/8"

Components & Subcomponents	Start	End
2-ID1 (6' 9")	1' 6"	4' 8"



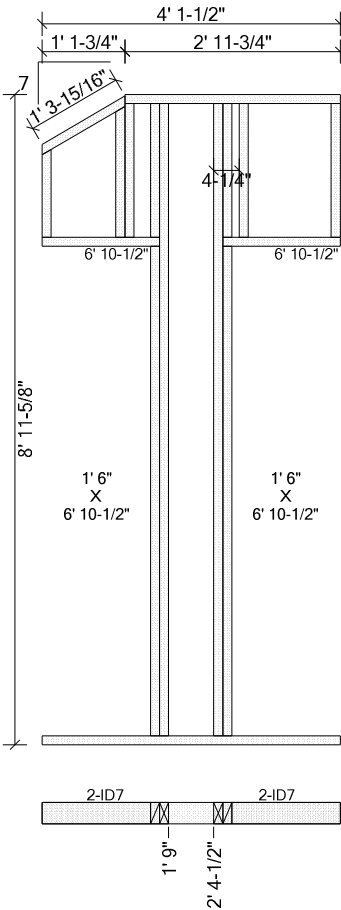
Top Plates:    2x4 SPF #2 6' 2"    Bottom Plates: 2x4 SPF #2 6' 2"  
Studs: (4) 2x4 SPF #2 8' 8-5/8"

Components & Subcomponents	Start	End
2-ID1 (6' 9")	1' 6"	4' 8"



Top Plates: 2x4 SPF #2 6' 5"    Bottom Plates: 2x4 SPF #2 6' 5"  
Studs: 2x4 SPF #2 8' 8-5/8"

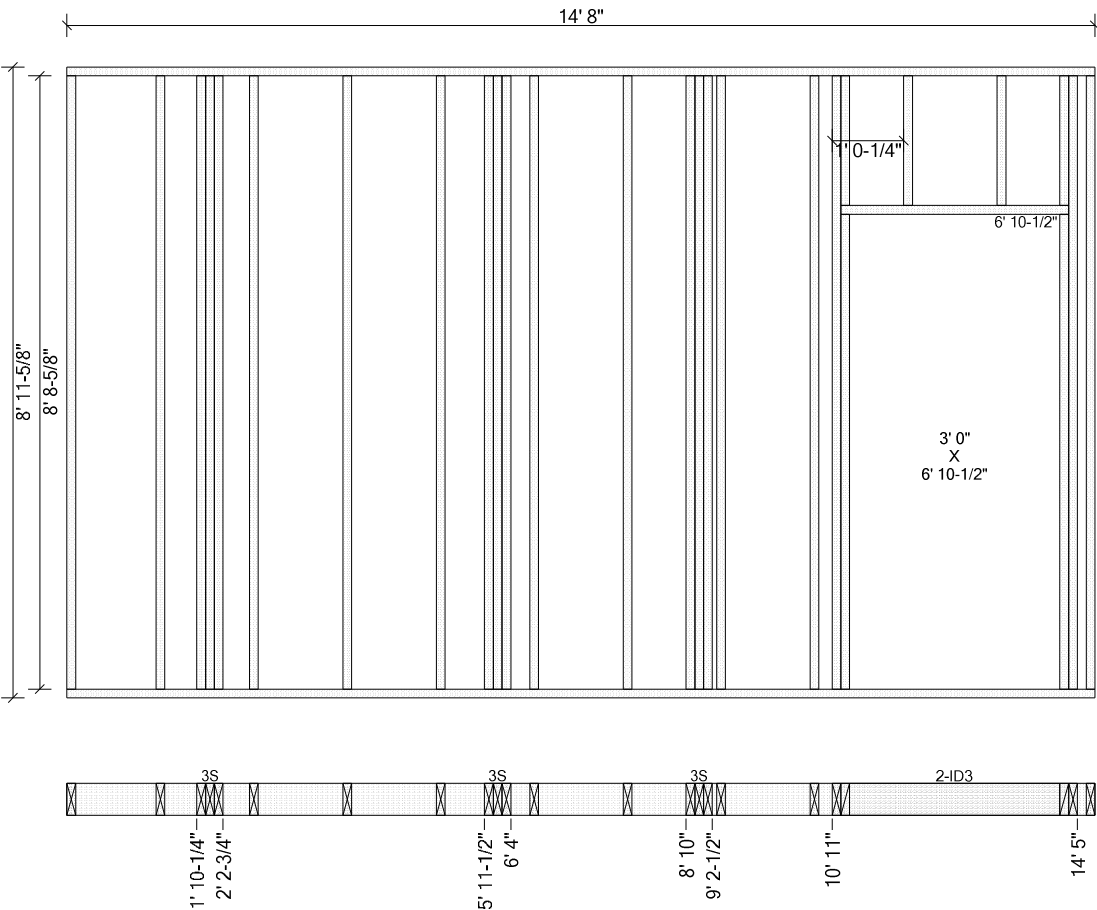
Components & Subcomponents	Start	End
2S	@ Start	3"
2-ID6 (6' 9")	4"	5' 6"



Top Plates: 2x4 SPF #2 2' 11-3/4"  
2x4 SPF #2 1' 4-13/16" -30.3 / Rk / 30.3

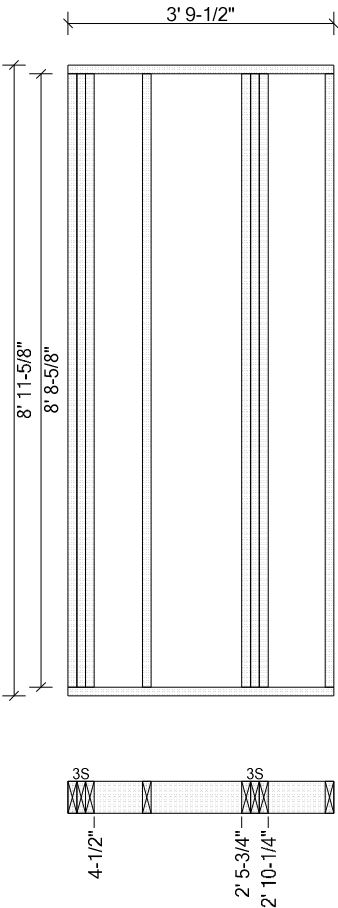
Bottom Plates: 2x4 SPF #2 4' 1-1/2"

Components & Subcomponents	Start	End
2-ID7 (6' 9")	@ Start	1' 9"
2-ID7 (6' 9")	2' 4-1/2"	@ End



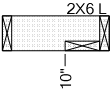
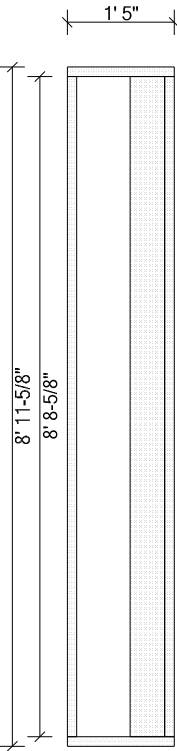
Top Plates:      2x6 SPF #2 14' 8"      Bottom Plates: 2x6 SPF #2 14' 8"  
Studs: (10) 2x6 SPF #2 8' 8-5/8"

Components & Subcomponents	Start	End
3S	1' 10-1/4"	2' 2-3/4"
3S	5' 11-1/2"	6' 4"
3S	8' 10"	9' 2-1/2"
2-ID3 (6' 9")	10' 11"	14' 5"



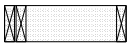
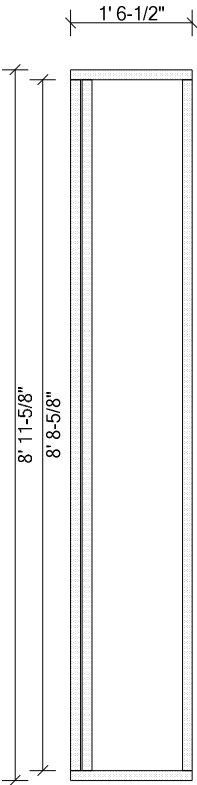
Top Plates:    2x6 SPF #2 3' 9-1/2"    Bottom Plates: 2x6 SPF #2 3' 9-1/2"  
Studs: (2) 2x6 SPF #2 8' 8-5/8"

Components & Subcomponents	Start	End
3S	@ Start	4-1/2"
3S	2' 5-3/4"	2' 10-1/4"



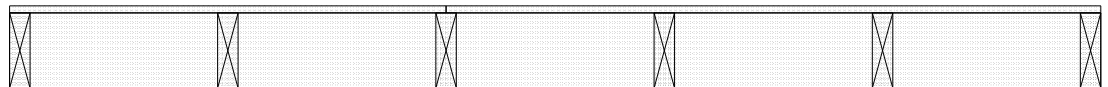
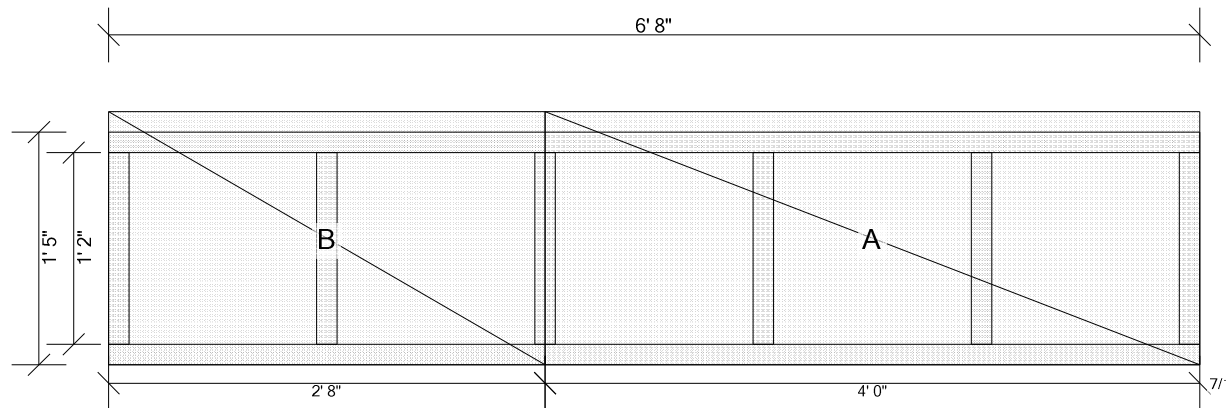
Top Plates: 2x6 SPF #2 1' 5"      Bottom Plates: 2x6 SPF #2 1' 5"  
Studs: 2x6 SPF #2 8' 8-5/8"

Components & Subcomponents	Start	End
2X6 L (2x6 Dn)	10"	@ End

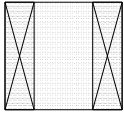
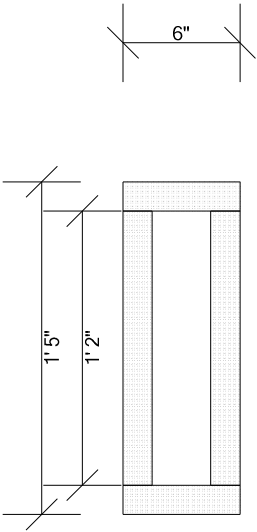


Top Plates:     2x6 SPF #2 1' 6-1/2"   Bottom Plates: 2x6 SPF #2 1' 6-1/2"  
Studs: (3) 2x6 SPF #2 8' 8-5/8"

Panel #EX118 Length: 6' 8" Height: 1' 6-1/2" First Stud Face @1' 3-1/4" (1' 4" o.c.) Diagonal: 6' 9-13/16"



Top Plates: 2x6 SPF #2 6' 8" Bottom Plates: 2x6 SPF #2 6' 8"  
Studs: (6) 2x6 SPF #2 1' 2"  
Exterior Sheathing: 7/16 OSB (8) Start: Flush End: Flush



Top Plates:     2x6 SPF #2 6"     Bottom Plates: 2x6 SPF #2 6"  
Studs: (2) 2x6 SPF #2 1' 2"