

Job Number: J20414

Ply: 1

Qty: 9

Wgt: 0.0 lbs

SEQN: 1879 / T1 / COMN

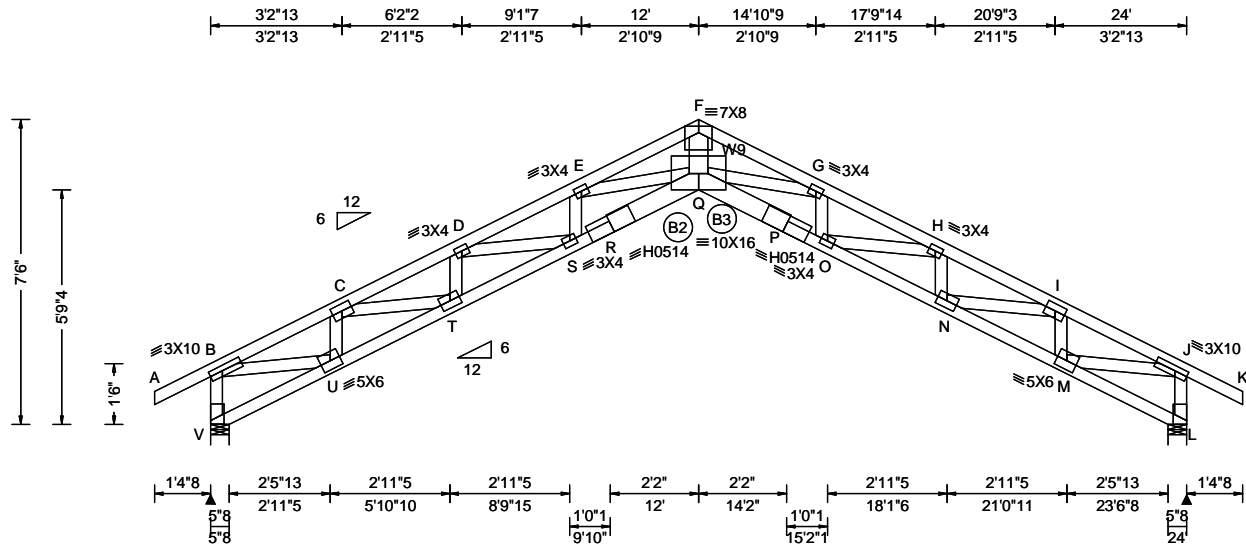
FROM:

DRW:

... / ...

10/27/16

Truss Label: S1

**Loading Criteria (psf)**

TCLL: 20.00  
 TCCL: 10.00  
 BCLL: 0.00  
 BCDL: 10.00

Des Ld: 40.00  
 NCBCLL: 20.00  
 Soffit: 2.00  
 Load Duration: 1.15  
 Spacing: 24.0 "

**Wind Criteria**

Wind Std: ASCE 7-02  
 Speed: 90 mph  
 Enclosure: Closed  
 Category: II  
 EXP: C  
 Mean Height: 15.00 ft  
 TCCL: 5.0 psf  
 BCDL: 5.0 psf  
 MWFRS Parallel Dist: 0 to h/2  
 C&C Dist a: 3.00 ft  
 Loc. from endwall: Any  
 I: 1.0 GCp: 0.18  
 Wind Duration: 1.33

**Snow Criteria (Pg,Pf in PSF)**

Pg: NA Ct: NA CAT: NA  
 Pf: NA Ce: NA  
 Lu: NA Cs: NA  
 Snow Duration: NA

**Code / Misc Criteria**

Bldg Code: Custom  
 TPI Std: 2002  
 Rep Factors Used: Yes  
 FT/RT:20(0)/10(0)  
 Plate Type(s):  
 WAVE, HS

**Defl/CSI Criteria**

PP Deflection in loc L/defl L/#  
 VERT(LL): 0.401 Q 710 240  
 VERT(TL): 0.838 Q 339 240  
 HORZ(LL): 0.447 L - -  
 HORZ(TL): 0.934 L - -  
 Creep Factor: 1.0  
 Max TC CSI: 0.524  
 Max BC CSI: 0.986  
 Max Web CSI: 0.744  
 Mfg Specified Camber:

VIEW Ver: 16.01.00B.0315.11

**▲ Maximum Reactions (lbs)**

Loc	R	/ U	/ Rw	/ Rh	/ RL	/ W
V	1109	/ 89	/ 355	/ -	/ 150	/ 5.5
L	1109	/ 89	/ 355	/ -	/ -	/ 5.5

Wind reactions based on MWFRS  
 V Min Brg Width Req = 1.5  
 L Min Brg Width Req = 1.5  
 Bearings V & L are a rigid surface.

**Maximum Top Chord Forces Per Ply (lbs)**

Chords	Tens.Comp.	Chords	Tens. Comp.
A - B	41 0	F - G	821 -4876
B - C	515 -2024	G - H	965 -4402
C - D	819 -3482	H - I	827 -3482
D - E	926 -4402	I - J	503 -2024
E - F	839 -4876	J - K	41 0

**Maximum Bot Chord Forces Per Ply (lbs)**

Chords	Tens.Comp.	Chords	Tens. Comp.
V - U	145 -187	Q - P	4482 -768
U - T	2126 -429	P - O	4419 -773
T - S	3569 -662	O - N	3569 -701
S - R	4419 -720	N - M	2126 -456
R - Q	4482 -716	M - L	55 -131

**Maximum Web Forces Per Ply (lbs)**

Webs	Tens.Comp.	Webs	Tens. Comp.
B - V	382 -1027	Q - G	399 -127
B - U	1875 -402	G - O	67 -376
U - C	218 -845	O - H	770 -60
C - T	1231 -203	H - N	129 -601
T - D	123 -601	N - I	1231 -213
D - S	770 -49	I - M	224 -845
S - E	61 -376	M - J	1875 -415
E - Q	399 0	L - J	375 -1027
F - Q	4280 -626		

**Lumber**

Top chord 2x4 SPF #1/#2  
 Bot chord 2x4 SPF 2100f-1.8E :B2, B3 2x6 SPF #1/#2:  
 Webs 2x4 SPF #1/#2 :W9 2x6 SPF #1/#2:

**Plating Notes**

All plates are 4X6 except as noted.

**Wind**

Wind loads based on MWFRS with additional C&C member design.

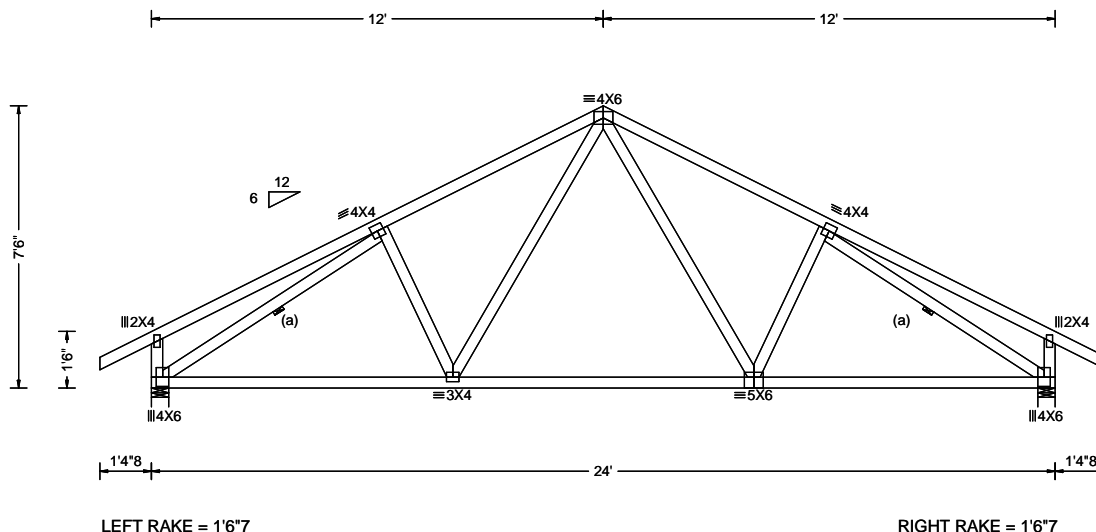
**\*\*WARNING\*\* READ AND FOLLOW ALL NOTES ON THIS DRAWING!****\*\*IMPORTANT\*\* FURNISH THIS DRAWING TO ALL CONTRACTORS INCLUDING THE INSTALLERS**

Trusses require extreme care in fabricating, handling, shipping, installing and bracing. Refer to and follow the latest edition of BCSI (Building Component Safety Information, by TPI and SBCA) for safety practices prior to performing these functions. Installers shall provide temporary bracing per BCSI. Unless noted otherwise, top chord shall have properly attached structural sheathing and bottom chord shall have a properly attached rigid ceiling. Locations shown for permanent lateral restraint of webs shall have bracing installed per BCSI sections B3, B7, or B10, as applicable. Apply plates to each face of truss and position as shown above and on the Joint Details, unless noted otherwise. Refer to drawings 160A-Z for standard plate positions.

Alpine, a division of ITW Building Components Group Inc. shall not be responsible for any deviation from this drawing, any failure to build the truss in conformance with ANSI/TPI 1, or for handling, shipping, installation and bracing of trusses. A seal on this drawing or cover page listing this drawing, indicates acceptance of professional engineering responsibility solely for the design shown. The suitability and use of this drawing for any structure is the responsibility of the Building Designer per ANSI/TPI 1 Sec.2.

For more information see this job's general notes page and these web sites: ALPINE: www.alpineitw.com; TPI: www.tpinet.org; SBCA: www.sbcindustry.com; ICC: www.iccsafe.org

Job Number: J20414	Ply: 1 Qty: 10 Wgt: 0.0 lbs	SEQN: 1882 / T3 / COMN FROM:	DRW: ... / ... 10/27/16
Truss Label: T1			



Loading Criteria (psf)	Wind Criteria	Snow Criteria (Pg,Pf in PSF)	Defl/CSI Criteria	▲ Maximum Reactions (lbs)
TCLL: 20.00 TCDL: 10.00 BCLL: 0.00 BCDL: 10.00 Des Ld: 40.00 NCBCLL: 20.00 Soffit: 2.00 Load Duration: 1.15 Spacing: 24.0 "	Wind Std: ASCE 7-02 Speed: 90 mph Enclosure: Closed Category: II EXP: C Mean Height: 15.00 ft TCDL: 5.0 psf BCDL: 5.0 psf MWFRS Parallel Dist: 0 to h/2 C&C Dist a: 3.00 ft Loc. from endwall: Any I: 1.0 GCpi: 0.18 Wind Duration: 1.33	Pg: NA Ct: NA CAT: NA Pf: NA Ce: NA Lu: NA Cs: NA Snow Duration: NA  <b>Code / Misc Criteria</b> Bldg Code: Custom TPI Std: 2002 Rep Factors Used: Yes FT/RT:20(0)/10(0) Plate Type(s): WAVE	PP Deflection in loc L/defl L/# VERT(LL): 0.039 J 999 240 VERT(TL): 0.080 J 999 240 HORZ(LL): 0.021 F - - HORZ(TL): 0.043 F - - Creep Factor: 1.0 Max TC CSI: 0.483 Max BC CSI: 0.994 Max Web CSI: 0.332 Mfg Specified Camber:  VIEW Ver: 16.01.00B.0315.11	Loc R / U / Rw / Rh / RL / W K 1080 / 100 / 348 / - / 150 / 5.5 H 1080 / 100 / 348 / - / 5.5 Wind reactions based on MWFRS K Min Brg Width Req = 1.7 H Min Brg Width Req = 1.7 Bearings K & H are a rigid surface.  <b>Maximum Top Chord Forces Per Ply (lbs)</b> Chords Tens.Comp. Chords Tens. Comp. A - B 41 0 D - E 475 -1230 B - C 154 -127 E - F 154 -128 C - D 475 -1232 F - G 41 0

**Lumber**  
Top chord 2x4 SPF #1/#2  
Bot chord 2x4 SPF #1/#2  
Webs 2x4 SPF #1/#2

**Bracing**  
(a) Continuous lateral restraint equally spaced on member.

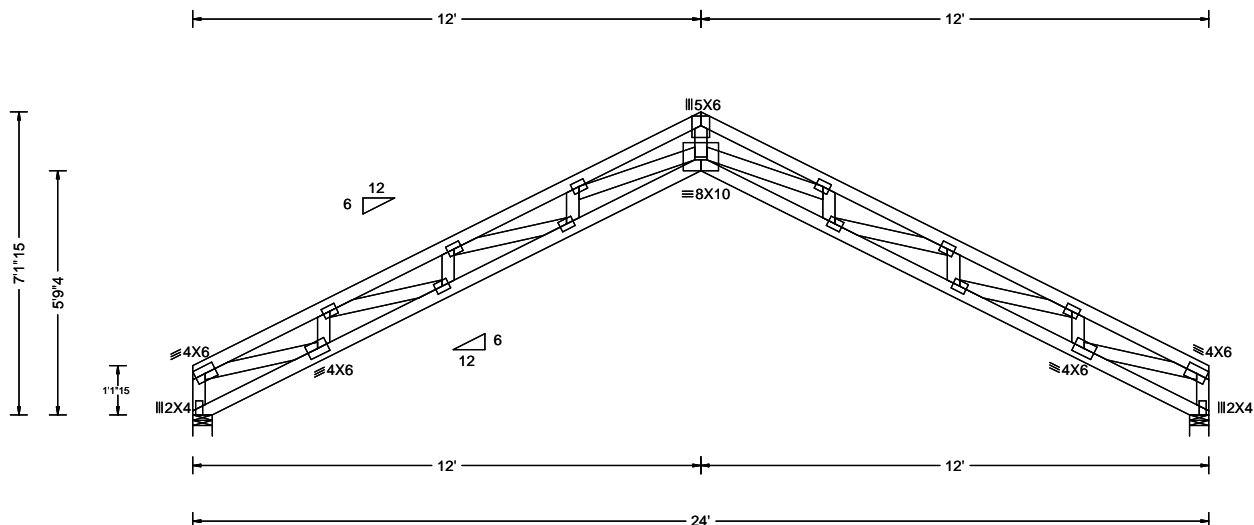
**Wind**  
Wind loads based on MWFRS with additional C&C member design.

Maximum Bot Chord Forces Per Ply (lbs)			
Chords	Tens.Comp.	Chords	Tens. Comp.
K - J	1089 -267	I - H	1088 -278
J - I	832 -141		

Maximum Web Forces Per Ply (lbs)			
Webs	Tens.Comp.	Webs	Tens. Comp.
B - K	252 -281	D - I	535 -128
K - C	331 -1272	I - E	192 -172
C - J	192 -172	E - H	332 -1270
J - D	540 -127	F - H	250 -282

**\*\*WARNING\*\*** READ AND FOLLOW ALL NOTES ON THIS DRAWING!  
**\*\*IMPORTANT\*\*** FURNISH THIS DRAWING TO ALL CONTRACTORS INCLUDING THE INSTALLERS  
Trusses require extreme care in fabricating, handling, shipping, installing and bracing. Refer to and follow the latest edition of BCSI (Building Component Safety Information, by TPI and SBCA) for safety practices prior to performing these functions. Installers shall provide temporary bracing per BCSI. Unless noted otherwise, top chord shall have properly attached structural sheathing and bottom chord shall have a properly attached rigid ceiling. Locations shown for permanent lateral restraint of webs shall have bracing installed per BCSI sections B3, B7, or B10, as applicable. Apply plates to each face of truss and position as shown above and on the Joint Details, unless noted otherwise. Refer to drawings 160A-Z for standard plate positions.  
Alpine, a division of ITW Building Components Group Inc. shall not be responsible for any deviation from this drawing, any failure to build the truss in conformance with ANSI/TPI 1, or for handling, shipping, installation and bracing of trusses. A seal on this drawing or cover page listing this drawing, indicates acceptance of professional engineering responsibility solely for the design shown. The suitability and use of this drawing for any structure is the responsibility of the Building Designer per ANSI/TPI 1 Sec.2.  
For more information see this job's general notes page and these web sites: ALPINE: www.alpineitw.com; TPI: www.tpinst.org; SBCA: www.sbcindustry.com; ICC: www.iccsafe.org

Job Number: J20414	Ply: 2 Qty: 1 Wgt: 0.0 lbs	SEQN: 1893 / T4 / GABL FROM:	DRW: ... / ... 10/27/16
Truss Label: GE1			



Loading Criteria (psf)	Wind Criteria	Snow Criteria (Pg,Pf in PSF)	Defl/CSI Criteria	▲ Maximum Reactions (lbs)
TCLL: 20.00 TCDL: 10.00 BCLL: 0.00 BCDL: 10.00 Des Ld: 40.00 NCBCLL: 20.00 Soffit: 2.00 Load Duration: 1.15 Spacing: 24.0 "	Wind Std: ASCE 7-02 Speed: 90 mph Enclosure: Closed Category: II EXP: C Mean Height: 15.00 ft TCDL: 5.0 psf BCDL: 5.0 psf MWFRS Parallel Dist: 0 to h/2 Loc. from endwall: Any I: 1.0 GCpi: 0.18 Wind Duration: 1.33	Pg: NA Ct: NA CAT: NA Pf: NA Ce: NA Lu: NA Cs: NA Snow Duration: NA  <b>Code / Misc Criteria</b> Bldg Code: Custom TPI Std: 2002 Rep Factors Used: Yes FT/RT:20(0)/10(0) Plate Type(s): WAVE	PP Deflection in loc L/defl L/# VERT(LL): 0.360 N 790 240 VERT(TL): 0.763 N 373 240 HORZ(LL): 0.398 J - - HORZ(TL): 0.843 J - - Creep Factor: 1.0 Max TC CSI: 0.272 Max BC CSI: 0.766 Max Web CSI: 0.649 Mfg Specified Camber:  VIEW Ver: 16.01.00B.0315.11	Loc R / U / Rw / Rh / RL / W R 1017 / 72 / 305 / - / 121 / 5.5 J 1017 / 72 / 305 / - / 5.5 Wind reactions based on MWFRS R Min Brg Width Req = 1.5 J Min Brg Width Req = 1.5 Bearings R & J are a rigid surface.  <b>Maximum Top Chord Forces Per Ply (lbs)</b> Chords Tens.Comp. Chords Tens. Comp. A - B 391 -1333 E - F 604 -3088 B - C 598 -2290 F - G 679 -2866 C - D 677 -2866 G - H 597 -2290 D - E 607 -3088 H - I 390 -1333

#### Lumber

Top chord 2x4 SPF #1/#2  
Bot chord 2x4 SPF #1/#2  
Webs 2x4 SPF #1/#2

#### Nailnote

Nail Schedule: 0.128"x3", min. nails  
Top Chord: 1 Row @12.00" o.c.  
Bot Chord: 1 Row @12.00" o.c.  
Webs : 1 Row @ 4" o.c.  
Use equal spacing between rows and stagger nails in each row to avoid splitting.

#### Plating Notes

All plates are 3X4 except as noted.

#### Loading

Gable end supports 8" max rake overhang. Top chord must not be cut or notched.

#### Wind

Wind loads based on MWFRS with additional C&C member design.

#### Additional Notes

See DWGS A10015020109, GBLLETIN0212, & GABRST020109 for gable wind bracing requirements.

#### Maximum Bot Chord Forces Per Ply (lbs)

Chords	Tens.Comp.	Chords	Tens. Comp.
R - Q	59 -80	N - M	2883 -595
Q - P	1390 -384	M - L	2328 -529
P - O	2328 -528	L - K	1390 -382
O - N	2883 -593	K - J	24 -73

#### Maximum Web Forces Per Ply (lbs)

Webs	Tens.Comp.	Webs	Tens. Comp.
A - Q	1235 -344	N - F	192 -80
Q - B	142 -438	F - M	41 -160
B - P	811 -160	M - G	487 -58
P - C	72 -296	G - L	73 -296
C - O	487 -58	L - H	811 -161
O - D	41 -160	H - K	142 -438
D - N	188 0	K - I	1235 -343

#### Maximum Gable Forces Per Ply (lbs)

Gables	Tens.Comp.	Gables	Tens. Comp.
A - R	158 -463	J - I	157 -463
E - N	2700 -478		

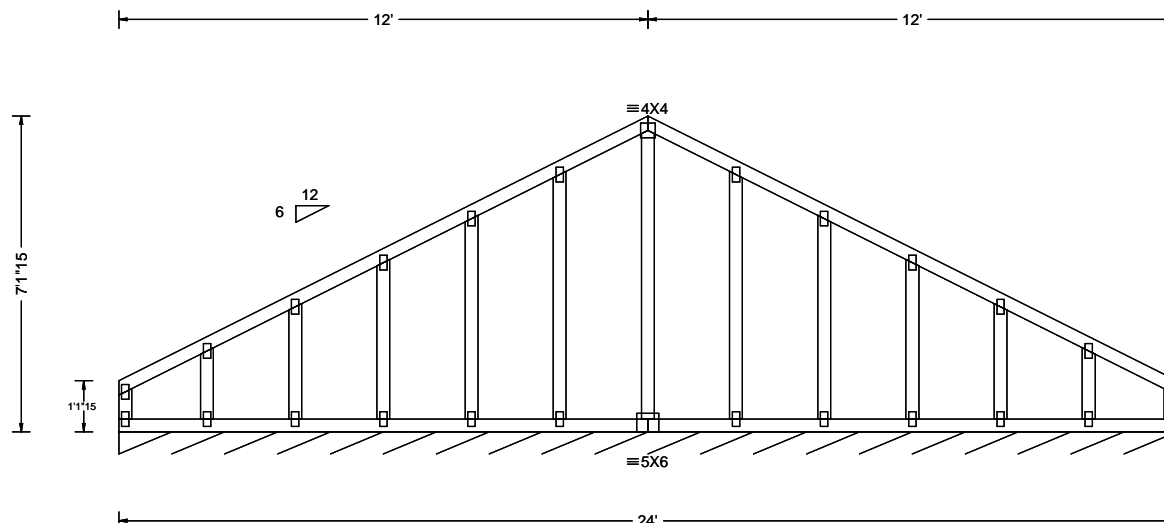
**\*\*WARNING\*\*** READ AND FOLLOW ALL NOTES ON THIS DRAWING!  
**\*\*IMPORTANT\*\*** FURNISH THIS DRAWING TO ALL CONTRACTORS INCLUDING THE INSTALLERS

Trusses require extreme care in fabricating, handling, shipping, installing and bracing. Refer to and follow the latest edition of BCSI (Building Component Safety Information, by TPI and SBCA) for safety practices prior to performing these functions. Installers shall provide temporary bracing per BCSI. Unless noted otherwise, top chord shall have properly attached structural sheathing and bottom chord shall have a properly attached rigid ceiling. Locations shown for permanent lateral restraint of webs shall have bracing installed per BCSI sections B3, B7, or B10, as applicable. Apply plates to each face of truss and position as shown above and on the Joint Details, unless noted otherwise. Refer to drawings 160A-Z for standard plate positions.

Alpine, a division of ITW Building Components Group Inc. shall not be responsible for any deviation from this drawing, any failure to build the truss in conformance with ANSI/TPI 1, or for handling, shipping, installation and bracing of trusses. A seal on this drawing or cover page listing this drawing, indicates acceptance of professional engineering responsibility solely for the design shown. The suitability and use of this drawing for any structure is the responsibility of the Building Designer per ANSI/TPI 1 Sec.2.

For more information see this job's general notes page and these web sites: ALPINE: [www.alpineitw.com](http://www.alpineitw.com); TPI: [www.tpinst.org](http://www.tpinst.org); SBCA: [www.sbcindustry.com](http://www.sbcindustry.com); ICC: [www.iccsafe.org](http://www.iccsafe.org)

Job Number: J20414	Ply: 1 Qty: 1 Wgt: 0.0 lbs	SEQN: 1124 / T5 / GABL FROM:	DRW: ... / ... 10/27/16
Truss Label: GE2			



Loading Criteria (psf)	Wind Criteria	Snow Criteria (Pg,Pf in PSF)	Defl/CSI Criteria	▲ Maximum Reactions (lbs), or *=PLF
TCLL: 20.00 TCDL: 10.00 BCLL: 0.00 BCDL: 10.00 Des Ld: 40.00 NCBCLL: 20.00 Soffit: 2.00 Load Duration: 1.15 Spacing: 24.0 "	Wind Std: ASCE 7-02 Speed: 90 mph Enclosure: Closed Category: II EXP: C Mean Height: 15.00 ft TCDL: 5.0 psf BCDL: 5.0 psf MWFRS Parallel Dist: 0 to h/2 C&C Dist a: 3.00 ft Loc. from endwall: Any I: 1.0 GCpi: 0.18 Wind Duration: 1.33	Pg: NA Ct: NA CAT: NA Pf: NA Ce: NA Lu: NA Cs: NA Snow Duration: NA  <b>Code / Misc Criteria</b> Bldg Code: Custom TPI Std: 2002 Rep Factors Used: No FT/RT:20(0)/10(0) Plate Type(s): WAVE	PP Deflection in loc L/defl L/# VERT(LL): 0.001 L 999 240 VERT(TL): 0.002 L 999 240 HORZ(LL): 0.021 H - - HORZ(TL): 0.048 H - - Creep Factor: 1.0 Max TC CSI: 0.059 Max BC CSI: 0.061 Max Web CSI: 0.124 Mfg Specified Camber:  VIEW Ver: 16.01.00B.0315.11	Loc R / U / Rw / Rh / RL / W Z* 82 / 7 / 22 / - / 5 / 288 Wind reactions based on MWFRS Z Min Brg Width Req = - Bearing Z is a rigid surface.  <b>Maximum Top Chord Forces Per Ply (lbs)</b> Chords Tens.Comp. Chords Tens. Comp. A - B 74 -71 G - H 252 -24 B - C 92 -46 H - I 210 -18 C - D 133 -31 I - J 171 -21 D - E 171 -21 J - K 133 -31 E - F 210 -18 K - L 92 -46 F - G 252 -24 L - M 74 -71

**Lumber**  
Top chord 2x4 SPF #1/#2  
Bot chord 2x4 SPF #1/#2  
Webs 2x4 SPF #1/#2

**Bracing**  
Fasten rated sheathing to one face of this frame.

**Plating Notes**  
All plates are 2X4 except as noted.

**Wind**  
Wind loads based on MWFRS with additional C&C member design.

**Additional Notes**  
See DWGS A10015020109, GBLLETIN0212, & GABRST020109 for gable wind bracing requirements.

Chords	Tens.Comp.	Chords	Tens. Comp.
Z - Y	59 -56	T - S	61 -61
Y - X	60 -58	S - R	61 -60
X - W	60 -59	R - Q	61 -60
W - V	61 -60	Q - P	60 -59
V - U	61 -60	P - O	60 -58
U - T	61 -61	O - N	59 -56

Gables	Tens.Comp.	Gables	Tens. Comp.
A - Z	43 -51	S - H	132 -141
B - Y	135 -133	R - I	70 -121
C - X	72 -122	Q - J	66 -124
D - W	66 -124	P - K	72 -122
E - V	70 -121	O - L	135 -133
F - U	132 -141	M - N	43 -51
G - T	0 -152		

**\*\*WARNING\*\*** READ AND FOLLOW ALL NOTES ON THIS DRAWING!  
**\*\*IMPORTANT\*\*** FURNISH THIS DRAWING TO ALL CONTRACTORS INCLUDING THE INSTALLERS  
Trusses require extreme care in fabricating, handling, shipping, installing and bracing. Refer to and follow the latest edition of BCSI (Building Component Safety Information, by TPI and SBCA) for safety practices prior to performing these functions. Installers shall provide temporary bracing per BCSI. Unless noted otherwise, top chord shall have properly attached structural sheathing and bottom chord shall have a properly attached rigid ceiling. Locations shown for permanent lateral restraint of webs shall have bracing installed per BCSI sections B3, B7, or B10, as applicable. Apply plates to each face of truss and position as shown above and on the Joint Details, unless noted otherwise. Refer to drawings 160A-Z for standard plate positions.  
Alpine, a division of ITW Building Components Group Inc. shall not be responsible for any deviation from this drawing, any failure to build the truss in conformance with ANSI/TPI 1, or for handling, shipping, installation and bracing of trusses. A seal on this drawing or cover page listing this drawing, indicates acceptance of professional engineering responsibility solely for the design shown. The suitability and use of this drawing for any structure is the responsibility of the Building Designer per ANSI/TPI 1 Sec.2.  
For more information see this job's general notes page and these web sites: ALPINE: www.alpineitw.com; TPI: www.tpinst.org; SBCA: www.sbcindustry.com; ICC: www.iccsafe.org