

Trusses to be spaced at 16.0" oc maximum.

Deflection meets L/360 live and L/240 total load. Creep increase factor for dead load is 2.00.

III 1.5X4  
 T1  
 W1  
 M1  
 W1  
 B1  
 1.5X4  
 2'5"8  
 2"  
 1'0"12  
 1'0"12  
 2"  
 R=73plf W=2'5"8  
 (Rigid Surface)

RIGHT JIG = 2'9"9  
SEQ = 129977  
5.14 SCALE = 1.7534

REV. 21.01.03A.0805.14

TC LL	40.0psf	REF
TC DL	10.0psf	DATE
BC DL	5.0psf	DRWG 10-21-2022
BC LL	0.0psf	
TOT.LD.	55.0psf	O/A LEN. 20508
DUR.FAC.	1.00	JOB #: D1021-754_22
SPACING	16.0"	TYPE SY42GABL

Top chord 4x2 SPF 1650f-1.5E  
Bot chord 4x2 SPF 1650f-1.5E  
Webs 4x2 SP #2

0"4

Truss must be installed as shown with top chord up.

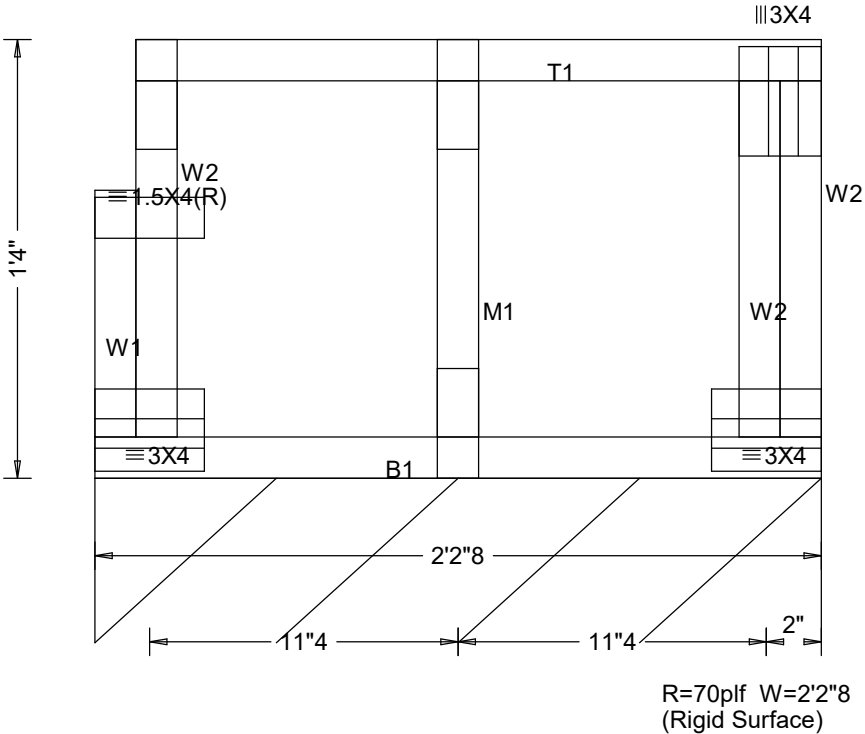


All plates are 1.5X4 except as noted.

Trusses to be spaced at 16.0" oc maximum.

Deflection meets L/360 live and L/240 total load. Creep increase factor for dead load is 2.00.

Fasten rated sheathing to one face of this frame.



LEFT JIG = 2'6"15

RIGHT JIG = 2'5"11  
SEQ = 129987  
SCALE = 1.7534

PLT. TYP.-WAVE      DESIGN CRIT=IBC2018/TPI-2014 FT/RT=12%(0%)/ 0(0)

QTY= 2 TOTAL= 2

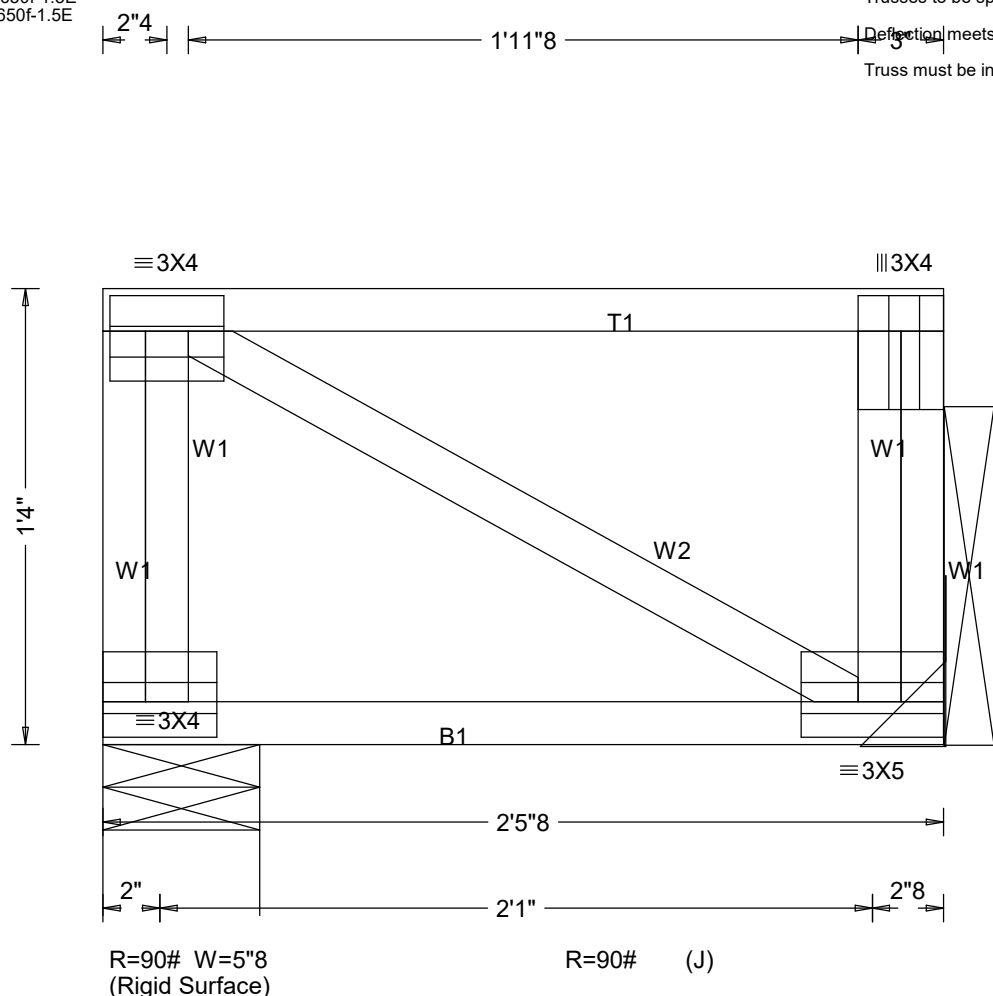
REV. 21.01.03A.0805.14

THIS DRAWING SHOULD BE APPROVED BY A REGISTERED PROFESSIONAL ENGINEER BEFORE USE. SEE PAGE A100 FOR GENERAL NOTES,IMPORTANT SPECIFICATIONS AND WARNINGS.

TC LL	40.0psf	REF
TC DL	10.0psf	DATE
BC DL	5.0psf	DRWG 10-21-2022
BC LL	0.0psf	
TOT.LD.	55.0psf	O/A LEN. 20208
DUR.FAC.	1.00	JOB #: D1021-754_22
SPACING	16.0"	TYPE SY42GABL

Top chord 4x2 SPF 1650f-1.5E  
Bot chord 4x2 SPF 1650f-1.5E  
Webs 4x2 SP #2

Trusses to be spaced at 16.0" oc maximum.  
Deflection meets L/360 live and L/240 total load. Creep increase factor for dead load is 2.00.  
Truss must be installed as shown with top chord up.



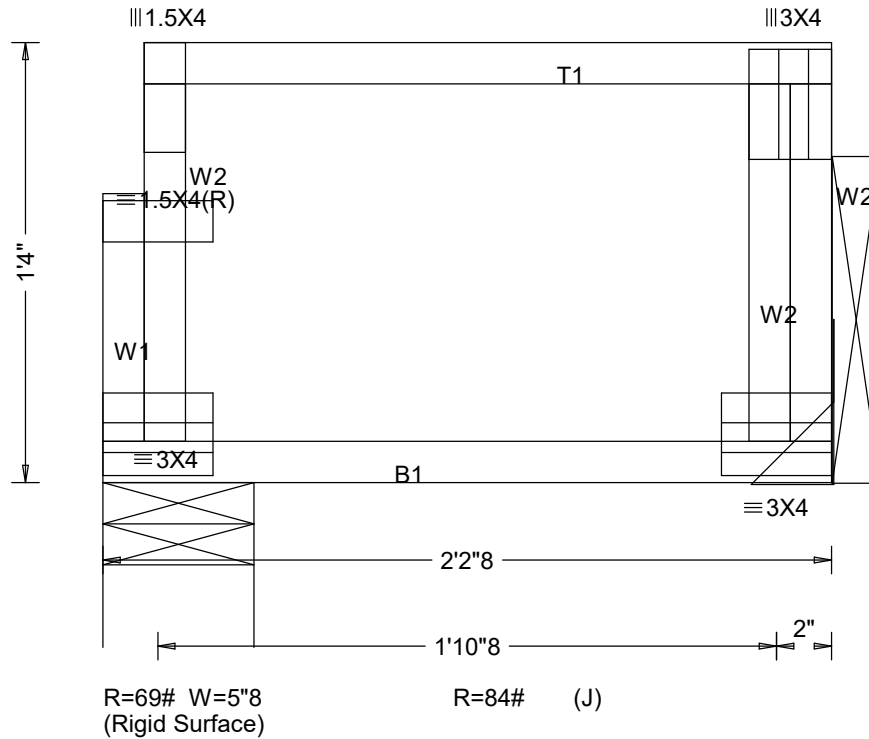
LEFT JIG = 2'9"9		RIGHT JIG = 2'9"9	
PLT. TYP.-WAVE		REV. 21.01.03A.0805.14	
DESIGN CRIT=IBC2018/TPI-2014 FT/RT=12%(0%)/ 0(0)		SEQ = 129979	
QTY= 6 TOTAL= 6		SCALE =1.8232	
<div>THIS DRAWING SHOULD BE APPROVED BY A REGISTERED PROFESSIONAL ENGINEER BEFORE USE. SEE PAGE A100 FOR GENERAL NOTES,IMPORTANT SPECIFICATIONS AND WARNINGS.</div>	TC LL	40.0psf	REF
	TC DL	10.0psf	DATE
	BC DL	5.0psf	DRWG 10-21-2022
	BC LL	0.0psf	
	TOT.LD.	55.0psf	O/A LEN. 20508
	DUR.FAC.	1.00	JOB #: D1021-754_22
	SPACING	16.0"	TYPE SY42

Top chord 4x2 SPF 1650f-1.5E  
Bot chord 4x2 SPF 1650f-1.5E  
Webs 4x2 SP #2

Trusses to be spaced at 16.0" oc maximum.

Deflection meets L/360 live and L/240 total load. Creep increase factor for dead load is 2.00.

Truss must be installed as shown with top chord up.



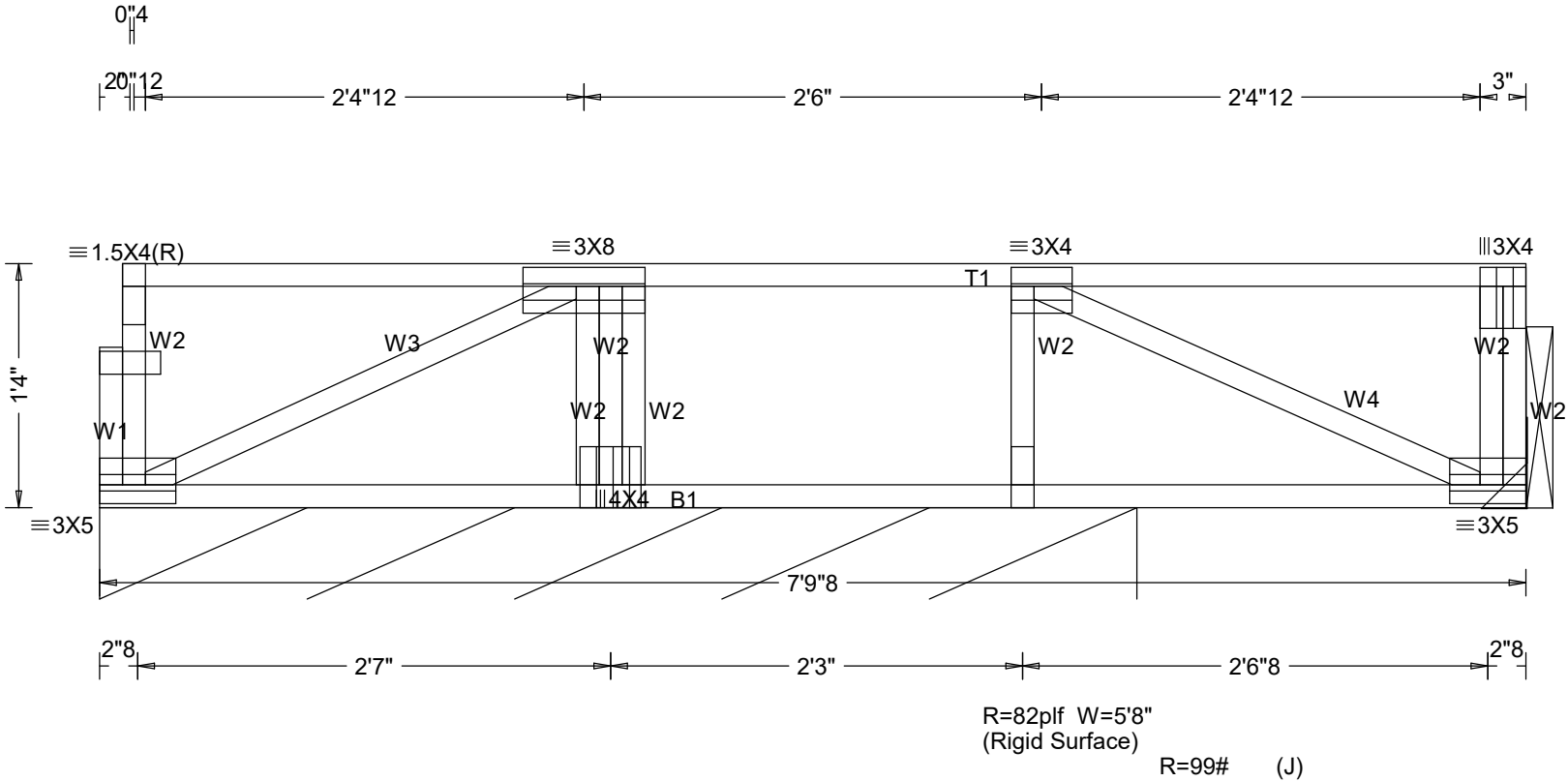
Top chord 4x2 SPF 1650f-1.5E  
Bot chord 4x2 SPF 1650f-1.5E  
Webs 4x2 SP #2

All plates are 1.5X4 except as noted.

Trusses to be spaced at 16.0" oc maximum.

Deflection meets L/360 live and L/240 total load. Creep increase factor for dead load is 2.00.

Truss must be installed as shown with top chord up.



LEFT JIG = 7'10"14

RIGHT JIG = 7'9"6  
SEQ = 130008  
SCALE =1.0083

PLT. TYP.-WAVE DESIGN CRIT=IBC2018/TPI-2014 FT/RT=12%(0%)/ 0(0)

QTY= 1 TOTAL= 1

REV. 21.01.03A.0805.14

THIS DRAWING SHOULD BE APPROVED BY A REGISTERED PROFESSIONAL ENGINEER BEFORE USE. SEE PAGE A100 FOR GENERAL NOTES,IMPORTANT SPECIFICATIONS AND WARNINGS.

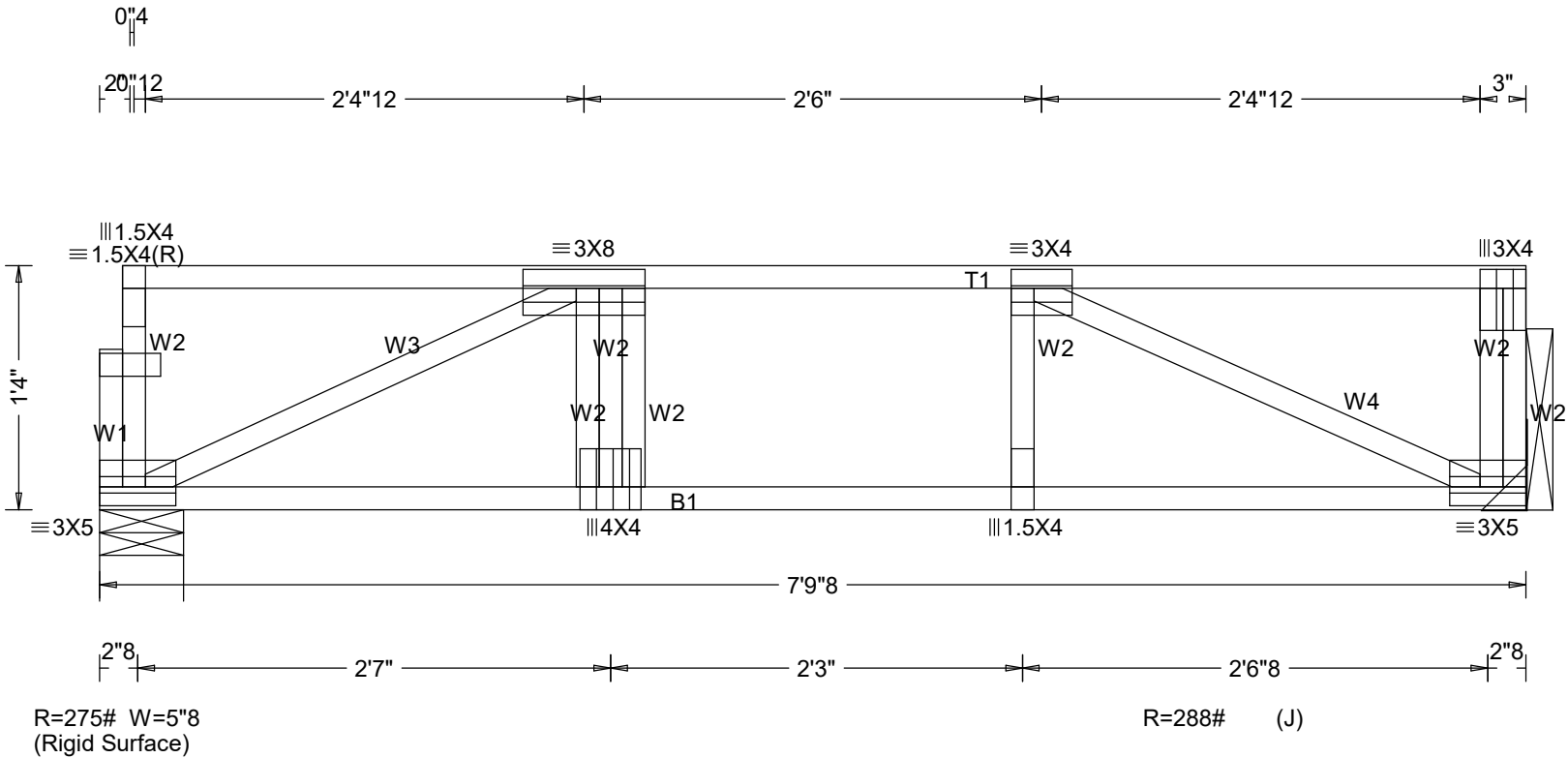
TC LL	40.0psf	REF
TC DL	10.0psf	DATE
BC DL	5.0psf	DRWG 10-21-2022
BC LL	0.0psf	
TOT.LD.	55.0psf	O/A LEN. 70908
DUR.FAC.	1.00	JOB #: D1021-754_22
SPACING	16.0"	TYPE SY42

Top chord 4x2 SPF 1650f-1.5E  
Bot chord 4x2 SPF 1650f-1.5E  
Webs 4x2 SP #2

Trusses to be spaced at 16.0" oc maximum.

Deflection meets L/360 live and L/240 total load. Creep increase factor for dead load is 2.00.

Truss must be installed as shown with top chord up.



LEFT JIG = 7'10"14

RIGHT JIG = 7'9"6  
SEQ = 130010  
SCALE = 1.0083

PLT. TYP.-WAVE DESIGN CRIT=IBC2018/TPI-2014 FT/RT=12%(0%)/ 0(0)

QTY= 1 TOTAL= 1

REV. 21.01.03A.0805.14

THIS DRAWING SHOULD BE APPROVED BY A REGISTERED PROFESSIONAL ENGINEER BEFORE USE. SEE PAGE A100 FOR GENERAL NOTES,IMPORTANT SPECIFICATIONS AND WARNINGS.

TC LL	40.0psf	REF
TC DL	10.0psf	DATE
BC DL	5.0psf	DRWG 10-21-2022
BC LL	0.0psf	
TOT.LD.	55.0psf	O/A LEN. 70908
DUR.FAC.	1.00	JOB #: D1021-754_22
SPACING	16.0"	TYPE SY42

Top chord 4x2 SPF 1650f-1.5E  
Bot chord 4x2 SPF 1650f-1.5E  
Webs 4x2 SP #2

Truss must be installed as shown with top chord up.

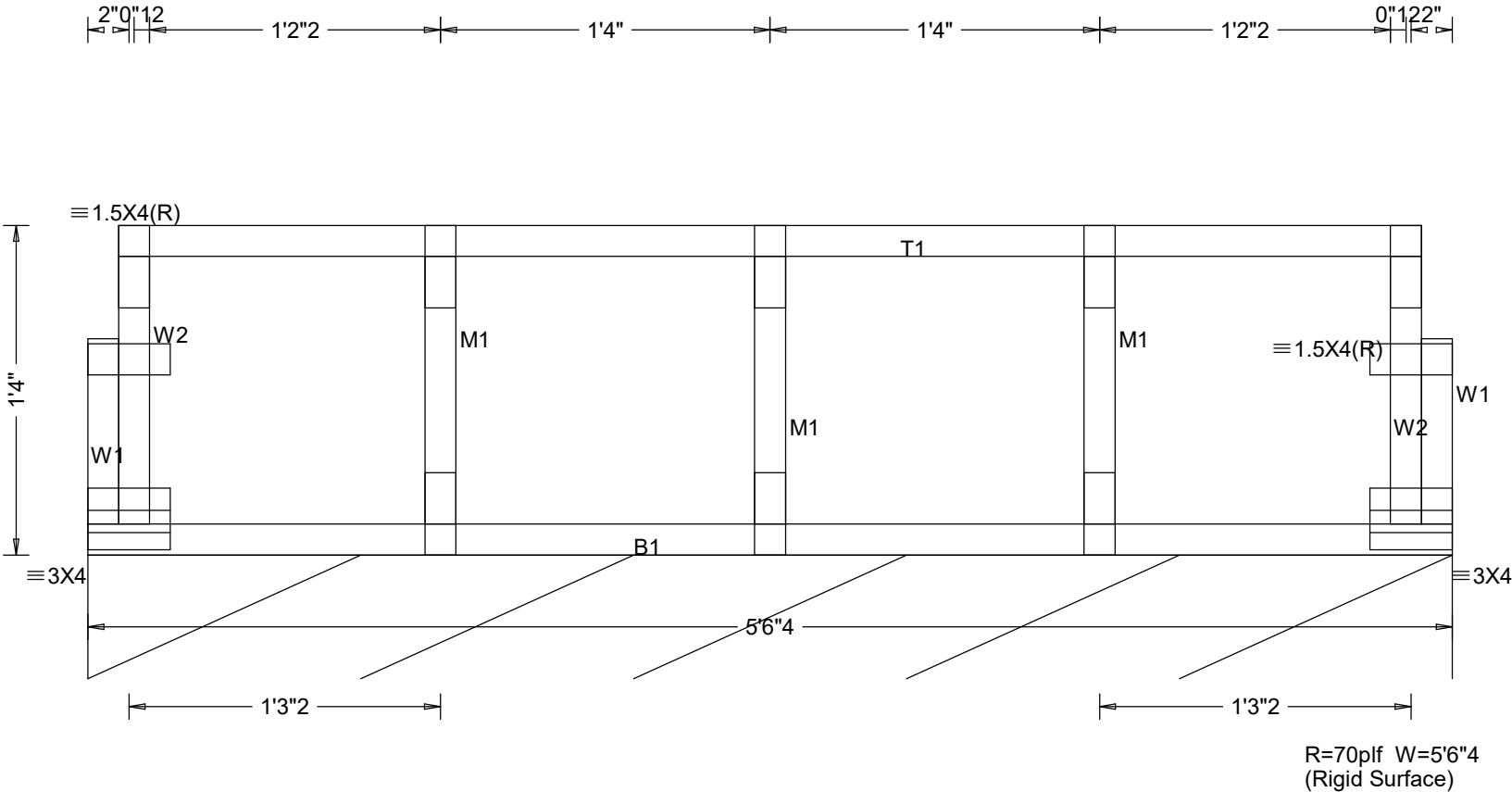
Fasten rated sheathing to one face of 0.54 frame.

All plates are 1.5X4 except as noted.

Trusses to be spaced at 16.0" oc maximum.

Deflection meets L/360 live and L/240 total load. Creep increase factor for dead load is 2.00.

Sheathing is required for any longitudinal(drag) forces. All connections to be designed by the building designer.



LEFT JIG = 5'6"11

RIGHT JIG = 5'6"11  
SEQ = 129995  
SCALE = 1.4230

PLT. TYP.-WAVE DESIGN CRIT=IBC2018/TPI-2014 FT/RT=12%(0%)/ 0(0)

QTY= 1 TOTAL= 1

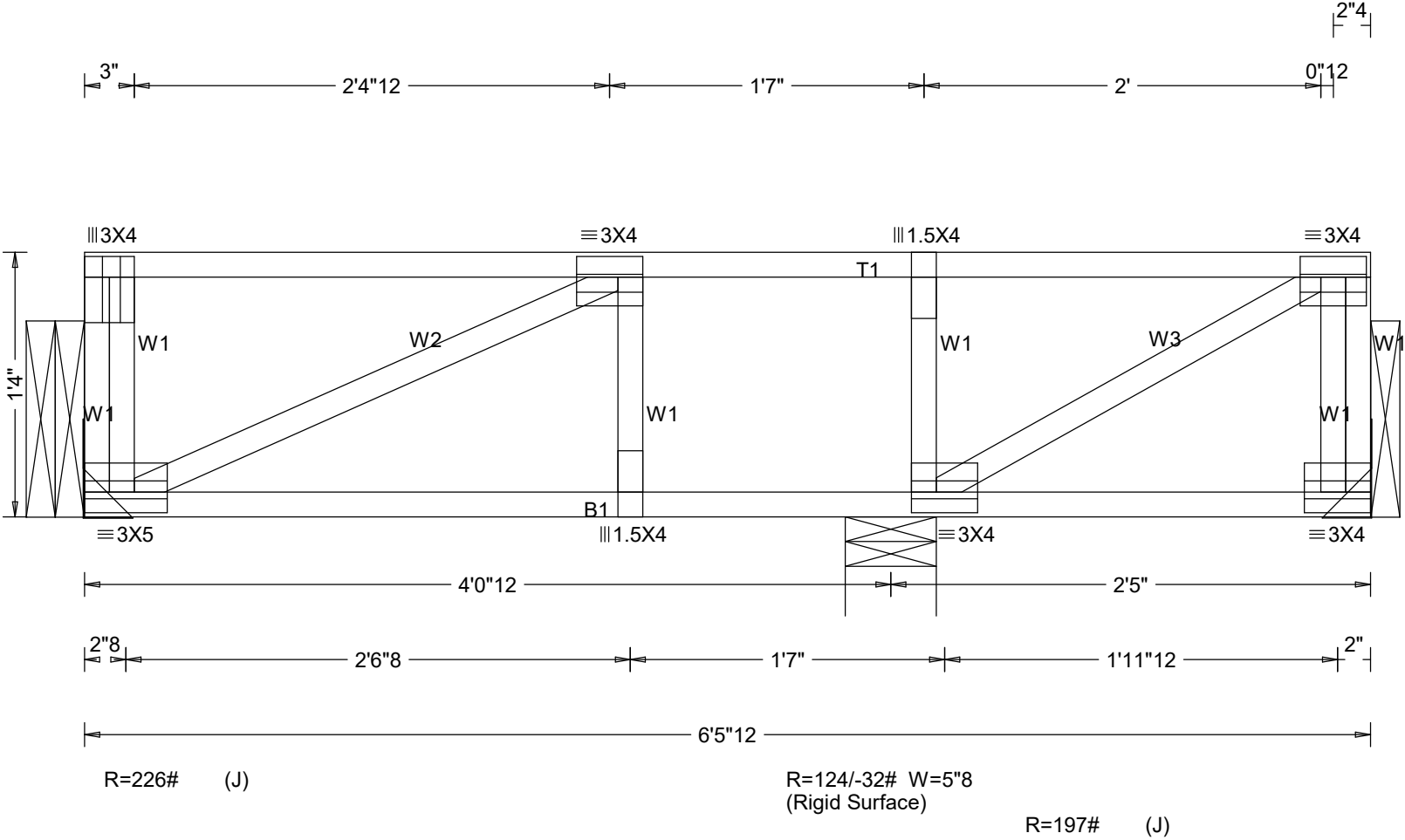
REV. 21.01.03A.0805.14

THIS DRAWING SHOULD BE APPROVED BY A REGISTERED  
PROFESSIONAL ENGINEER BEFORE USE. SEE PAGE A100  
FOR GENERAL NOTES,IMPORTANT SPECIFICATIONS AND  
WARNINGS.

TC LL	40.0psf	REF
TC DL	10.0psf	DATE
BC DL	5.0psf	DRWG 10-21-2022
BC LL	0.0psf	
TOT.LD.	55.0psf	O/A LEN. 50604
DUR.FAC.	1.00	JOB #: D1021-754_22
SPACING	16.0"	TYPE SY42GABL

Top chord 4x2 SPF 1650f-1.5E  
Bot chord 4x2 SPF 1650f-1.5E  
Webs 4x2 SP #2

Trusses to be spaced at 16.0" oc maximum.  
Deflection meets L/360 live and L/240 total load. Creep increase factor for dead load is 2.00.  
Truss must be installed as shown with top chord up.



LEFT JIG = 6'7"6		RIGHT JIG = 6'7"6	
PLT. TYP.-WAVE		SEQ = 129975	
DESIGN CRIT=IBC2018/TPI-2014 FT/RT=12%(0%)/ 0(0)		SCALE =1.2125	
QTY= 21 TOTAL= 21		REV. 21.01.03A.0805.14	
THIS DRAWING SHOULD BE APPROVED BY A REGISTERED PROFESSIONAL ENGINEER BEFORE USE. SEE PAGE A100 FOR GENERAL NOTES,IMPORTANT SPECIFICATIONS AND WARNINGS.		TC LL	40.0psf
		TC DL	10.0psf
		BC DL	5.0psf
		BC LL	0.0psf
		TOT.LD.	55.0psf
		DUR.FAC.	1.00
		SPACING	16.0"
		REF	
		DATE	
		DRWG	10-21-2022
		O/A LEN.	60512
		JOB #:	D1021-754_22
		TYPE	SY42

Top chord 4x2 SPF 1650f-1.5E  
Bot chord 4x2 SPF 1650f-1.5E  
Webs 4x2 SP #2

Truss must be installed as shown with top chord up.

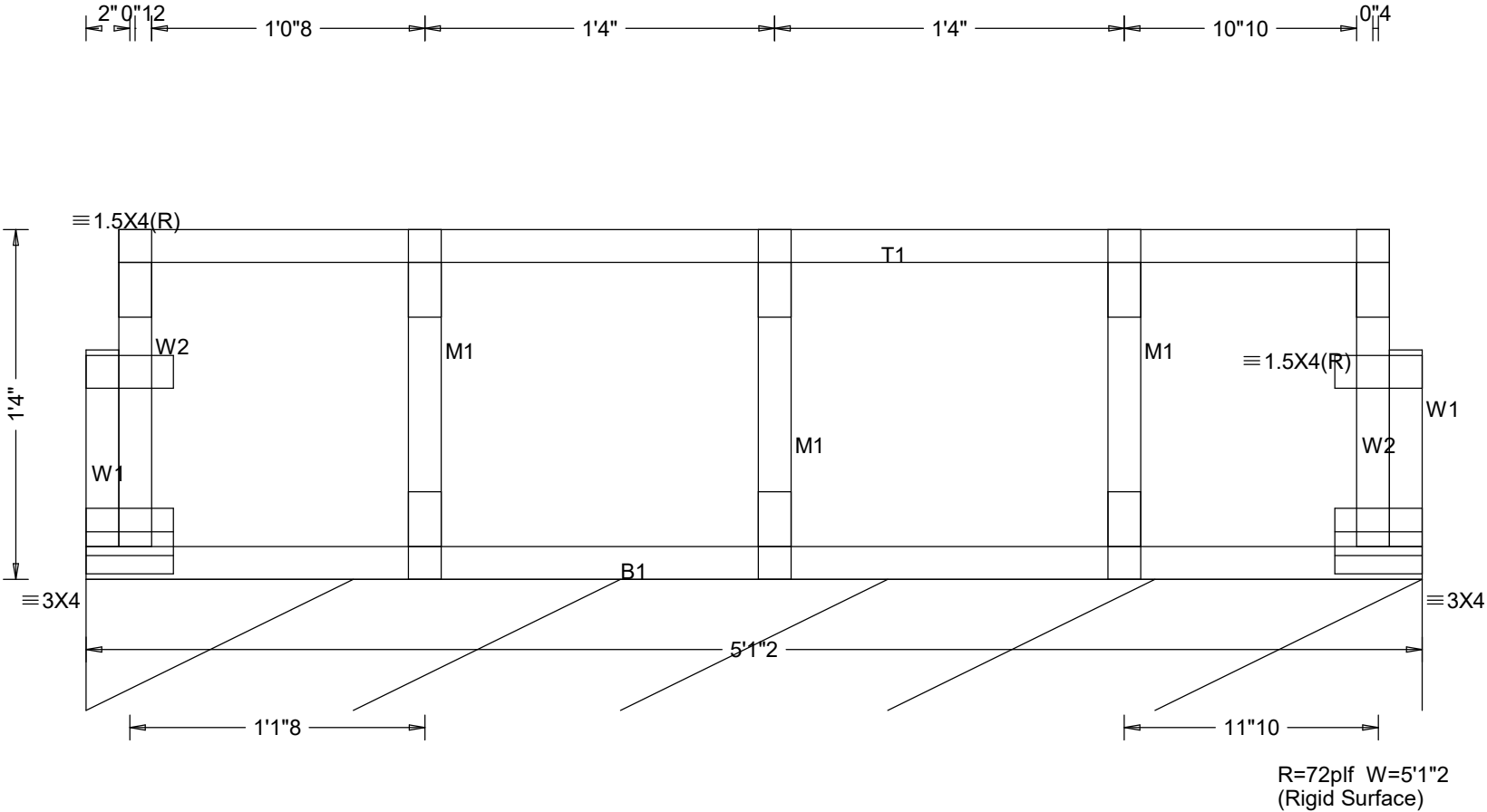
Fasten rated sheathing to one face of this frame.

All plates are 1.5X4 except as noted.

Trusses to be spaced at 16.0" oc maximum.

Deflection meets L/360 live and L/240 total load. Creep increase factor for dead loads 1.00.

Sheathing is required for any longitudinal(drag) forces. All connections to be designed by the building designer.



LEFT JIG = 5'1"12

PLT. TYP.-WAVE

DESIGN CRIT=IBC2018/TPI-2014 FT/RT=12%(0%)/ 0(0)

QTY= 1 TOTAL= 1

REV. 21.01.03A.0805.14

RIGHT JIG = 5'1"12  
SEQ = 130875  
SCALE =1.5423

THIS DRAWING SHOULD BE APPROVED BY A REGISTERED PROFESSIONAL ENGINEER BEFORE USE. SEE PAGE A100 FOR GENERAL NOTES,IMPORTANT SPECIFICATIONS AND WARNINGS.

TC LL	40.0psf	REF
TC DL	10.0psf	DATE
BC DL	5.0psf	DRWG 10-21-2022
BC LL	0.0psf	
TOT.LD.	55.0psf	O/A LEN. 50102
DUR.FAC.	1.00	JOB #: D1021-754_22
SPACING	16.0"	TYPE SY42GABL

Top chord 4x2 SPF 1650f-1.5E  
Bot chord 4x2 SPF 1650f-1.5E  
Webs 4x2 SP #2

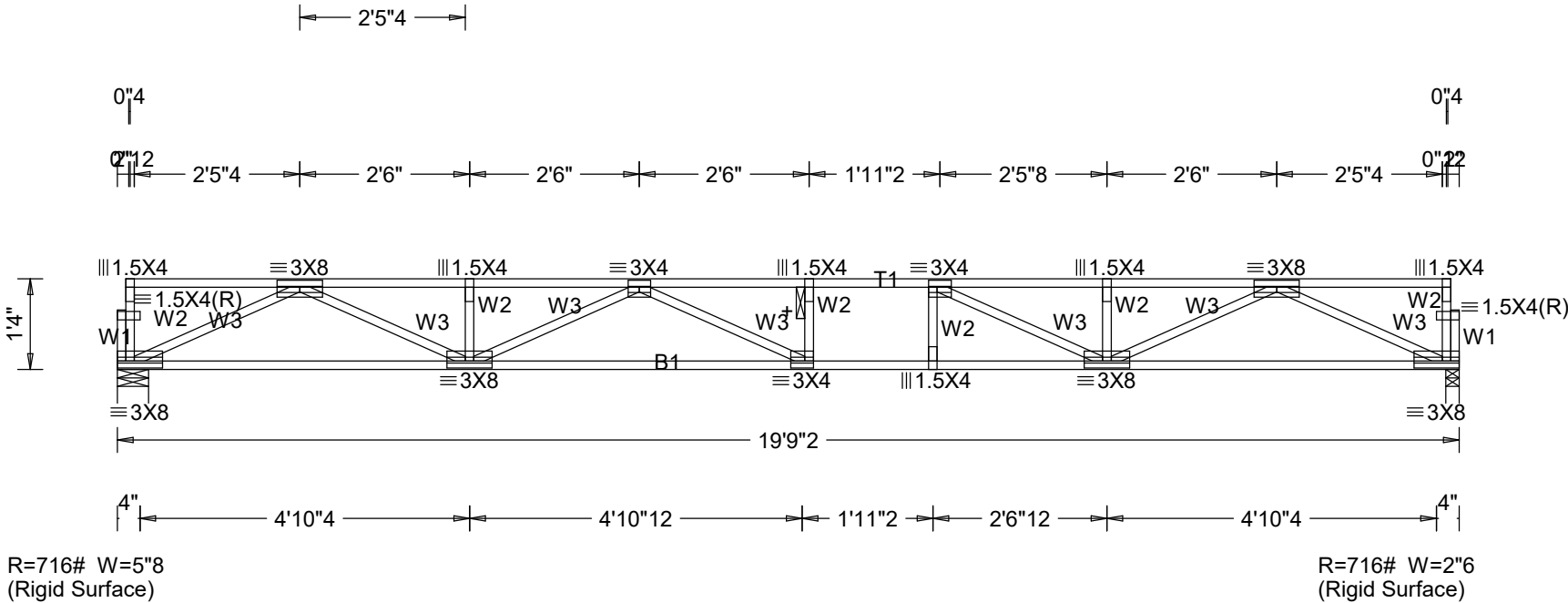
Deflection meets L/360 live and L/240 total load. Creep increase factor for dead load is 2.00.

+ 2x6 continuous strongback. See detail STRBRIBR1014 for bracing and bridging recommendations.

Max JT VERT DEFL: LL: 0.35" DL: 0.17". See detail DEFLCAMB1014 for camber recommendations.

Trusses to be spaced at 16.0" oc maximum.

Truss must be installed as shown with top chord up.



LEFT JIG = 19'8"3

PLT. TYP.-WAVE

DESIGN CRIT=IBC2018/TPI-2014 FT/RT=12%(0%)/ 0(0)

QTY= 23 TOTAL= 23

RIGHT JIG = 19'8"3  
SEQ = 130865  
SCALE =0.3976

REV. 21.01.03A.0805.14

THIS DRAWING SHOULD BE APPROVED BY A REGISTERED PROFESSIONAL ENGINEER BEFORE USE. SEE PAGE A100 FOR GENERAL NOTES,IMPORTANT SPECIFICATIONS AND WARNINGS.

TC LL	40.0psf
TC DL	10.0psf
BC DL	5.0psf
BC LL	0.0psf
TOT.LD.	55.0psf

DUR.FAC.	1.00
SPACING	16.0"

REF	
DATE	
DRWG	10-21-2022
O/A LEN.	190902
JOB #:	D1021-754_22
TYPE	SY42

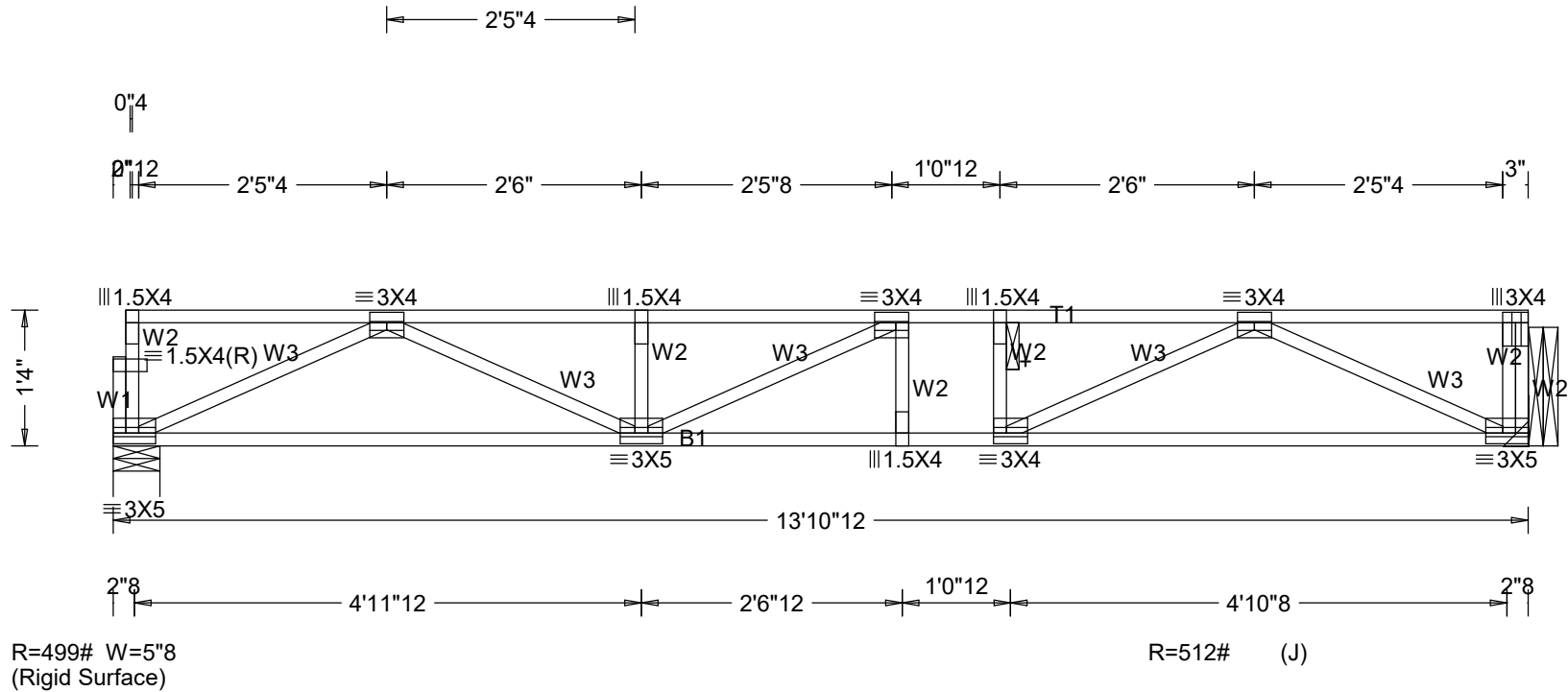
Top chord 4x2 SPF 1650f-1.5E  
Bot chord 4x2 SPF 1650f-1.5E  
Webs 4x2 SP #2

Truss must be installed as shown with top chord up.

+ 2x6 continuous strongback. See detail STRBRIBR1014 for bracing and bridging recommendations.

Trusses to be spaced at 16.0" oc maximum.

Deflection meets L/360 live and L/240 total load. Creep increase factor for dead load is 2.00.



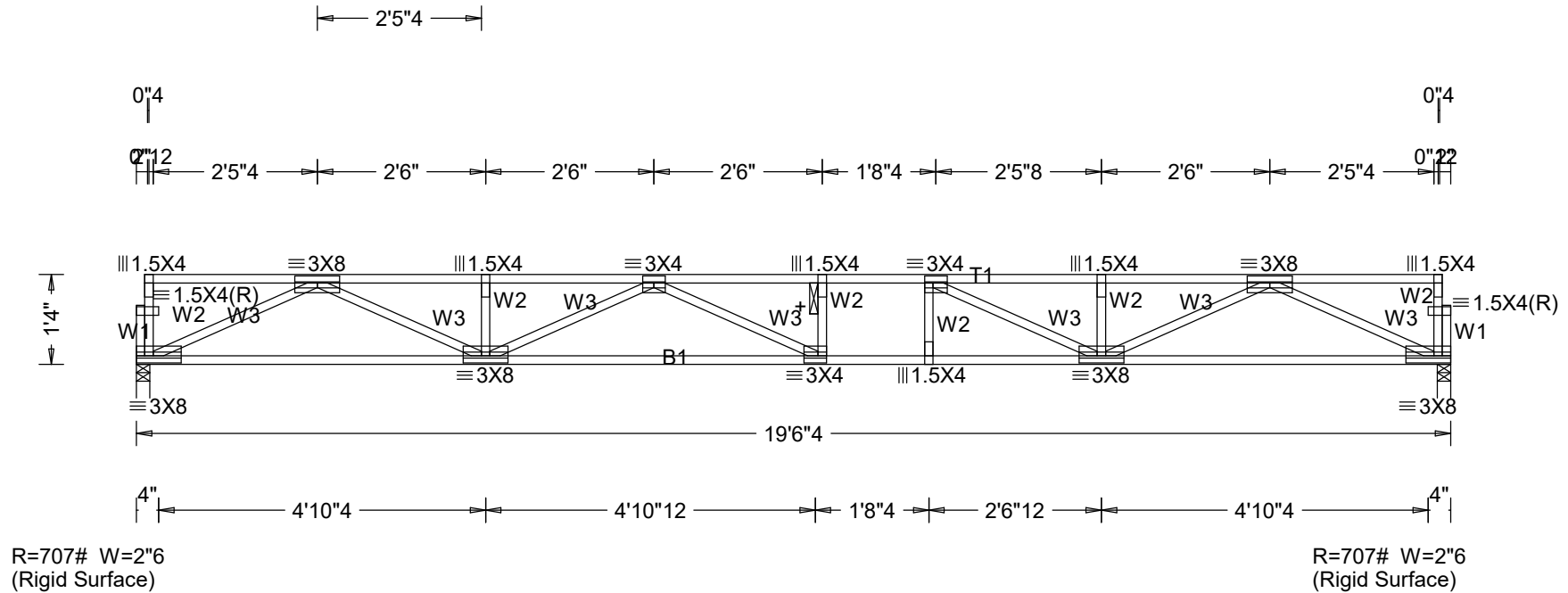
Top chord 4x2 SPF 1650f-1.5E  
Bot chord 4x2 SPF 1650f-1.5E  
Webs 4x2 SP #2

Truss must be installed as shown with top chord up.

+ 2x6 continuous strongback. See detail STRBRIBR1014 for bracing and bridging recommendations.

Trusses to be spaced at 16.0" oc maximum.

Deflection meets L/360 live and L/240 total load. Creep increase factor for dead load is 2.00.



LEFT JIG = 19'5"5

PLT. TYP.-WAVE

DESIGN CRIT=IBC2018/TPI-2014 FT/RT=12%(0%)/ 0(0)

QTY= 23 TOTAL= 23

RIGHT JIG = 19'5"5  
SEQ = 130867  
5.14 SCALE = 0.4024

THIS DRAWING SHOULD BE APPROVED BY A REGISTERED PROFESSIONAL ENGINEER BEFORE USE. SEE PAGE A100 FOR GENERAL NOTES,IMPORTANT SPECIFICATIONS AND WARNINGS.

REV. 21.01.03A.0805.14

TC LL	40.0psf
TC DL	10.0psf
BC DL	5.0psf
BC LL	0.0psf
TOT.LD.	<u>55.0psf</u>

DUR.FAC.	1.00
SPACING	16.0"

REF	
DATE	
DRWG	10-21-2022
O/A LEN.	190604
JOB #:	D1021-754_22
TYPE	SY42

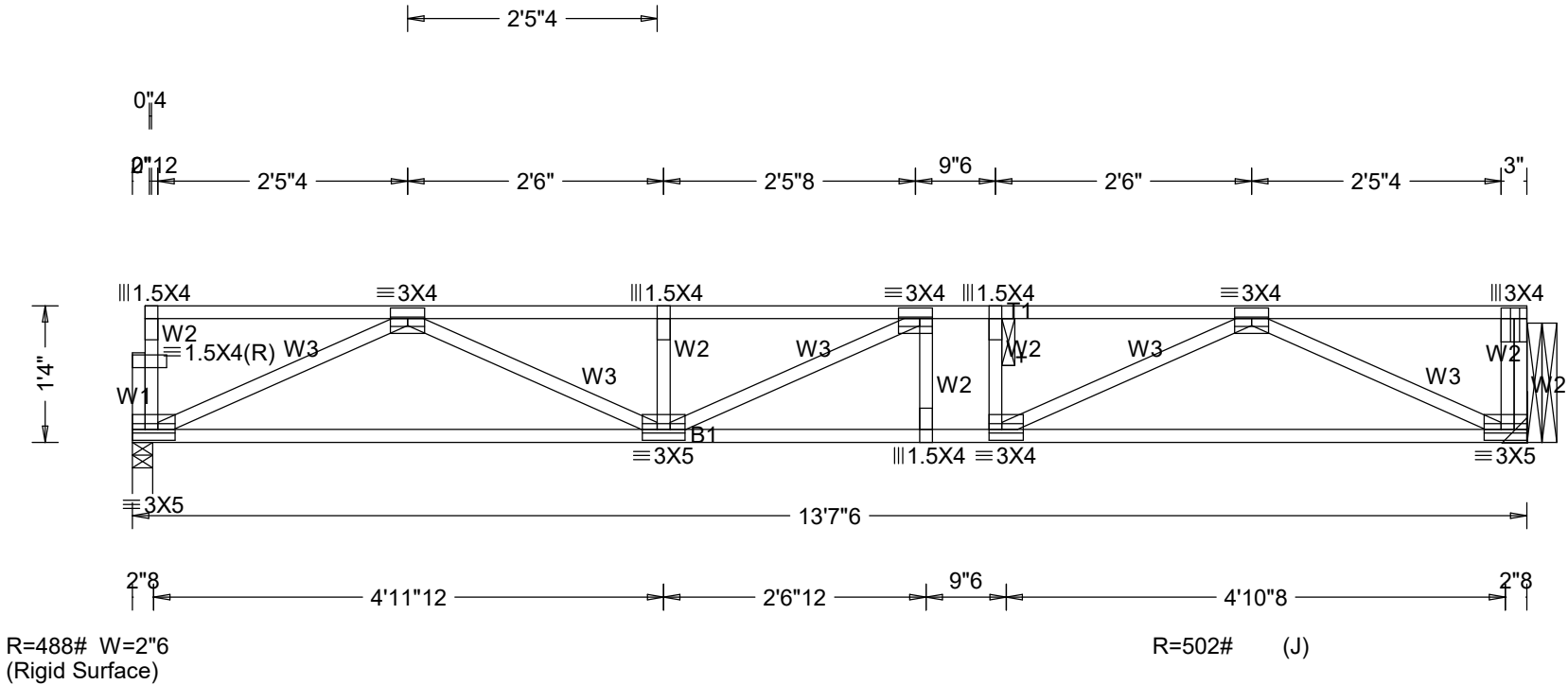
Top chord 4x2 SPF 1650f-1.5E  
Bot chord 4x2 SPF 1650f-1.5E  
Webs 4x2 SP #2

+ 2x6 continuous strongback. See detail STRBRIBR1014 for bracing and bridging recommendations.

Trusses to be spaced at 16.0" oc maximum.

Deflection meets L/360 live and L/240 total load. Creep increase factor for dead load is 2.00.

Truss must be installed as shown with top chord up.



LEFT JIG = 13'8"3

RIGHT JIG = 13'6"11  
SEQ = 130871  
SCALE = 0.5770

PLT. TYP.-WAVE DESIGN CRIT=IBC2018/TPI-2014 FT/RT=12%(0%)/ 0(0)

QTY= 9 TOTAL= 9

REV. 21.01.03A.0805.14

THIS DRAWING SHOULD BE APPROVED BY A REGISTERED PROFESSIONAL ENGINEER BEFORE USE. SEE PAGE A100 FOR GENERAL NOTES,IMPORTANT SPECIFICATIONS AND WARNINGS.	TC LL 40.0psf TC DL 10.0psf BC DL 5.0psf BC LL 0.0psf TOT.LD. 55.0psf DUR.FAC. 1.00 SPACING 16.0"	REF DATE DRWG 10-21-2022 O/A LEN. 130706 JOB #: D1021-754_22 TYPE SY42

Top chord 4x2 SPF 1650f-1.5E  
Bot chord 4x2 SPF 1650f-1.5E  
Webs 4x2 SP #2

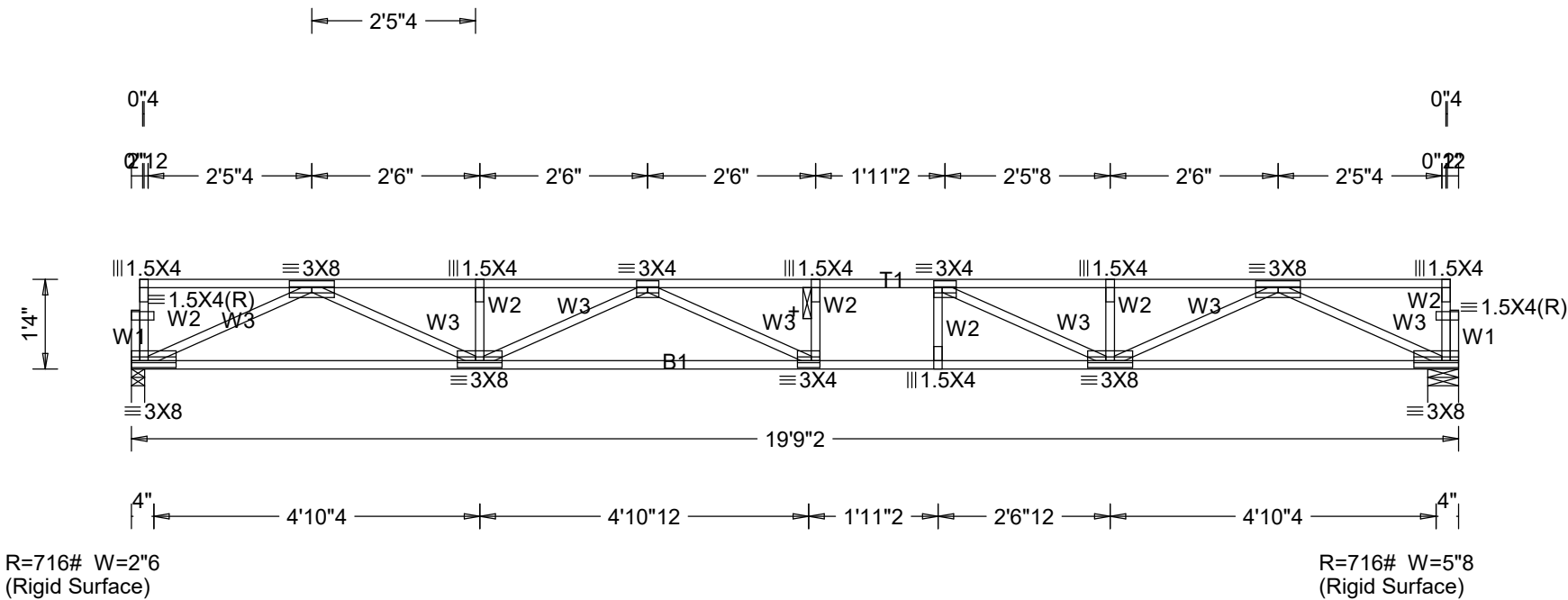
Deflection meets L/360 live and L/240 total load. Creep increase factor for dead load is 2.00.

+ 2x6 continuous strongback. See detail STRBRIBR1014 for bracing and bridging recommendations.

Max JT VERT DEFL: LL: 0.35" DL: 0.17". See detail DEFLCAMB1014 for camber recommendations.

Trusses to be spaced at 16.0" oc maximum.

Truss must be installed as shown with top chord up.



PLT. TYP.-WAVE		DESIGN CRIT=IBC2018/TPI-2014 FT/RT=12%(0%)/ 0(0)		QTY= 23 TOTAL= 23		REV. 21.01.03A.0805.14		RIGHT JIG = 19'8"3 SEQ = 130869 SCALE = 0.3976	
THIS DRAWING SHOULD BE APPROVED BY A REGISTERED PROFESSIONAL ENGINEER BEFORE USE. SEE PAGE A100 FOR GENERAL NOTES,IMPORTANT SPECIFICATIONS AND WARNINGS.						TC LL	40.0psf	REF	
						TC DL	10.0psf	DATE	
						BC DL	5.0psf	DRWG 10-21-2022	
						BC LL	0.0psf		
						TOT.LD.	55.0psf	O/A LEN. 190902	
						DUR.FAC.	1.00	JOB #: D1021-754_22	
						SPACING	16.0"	TYPE SY42	

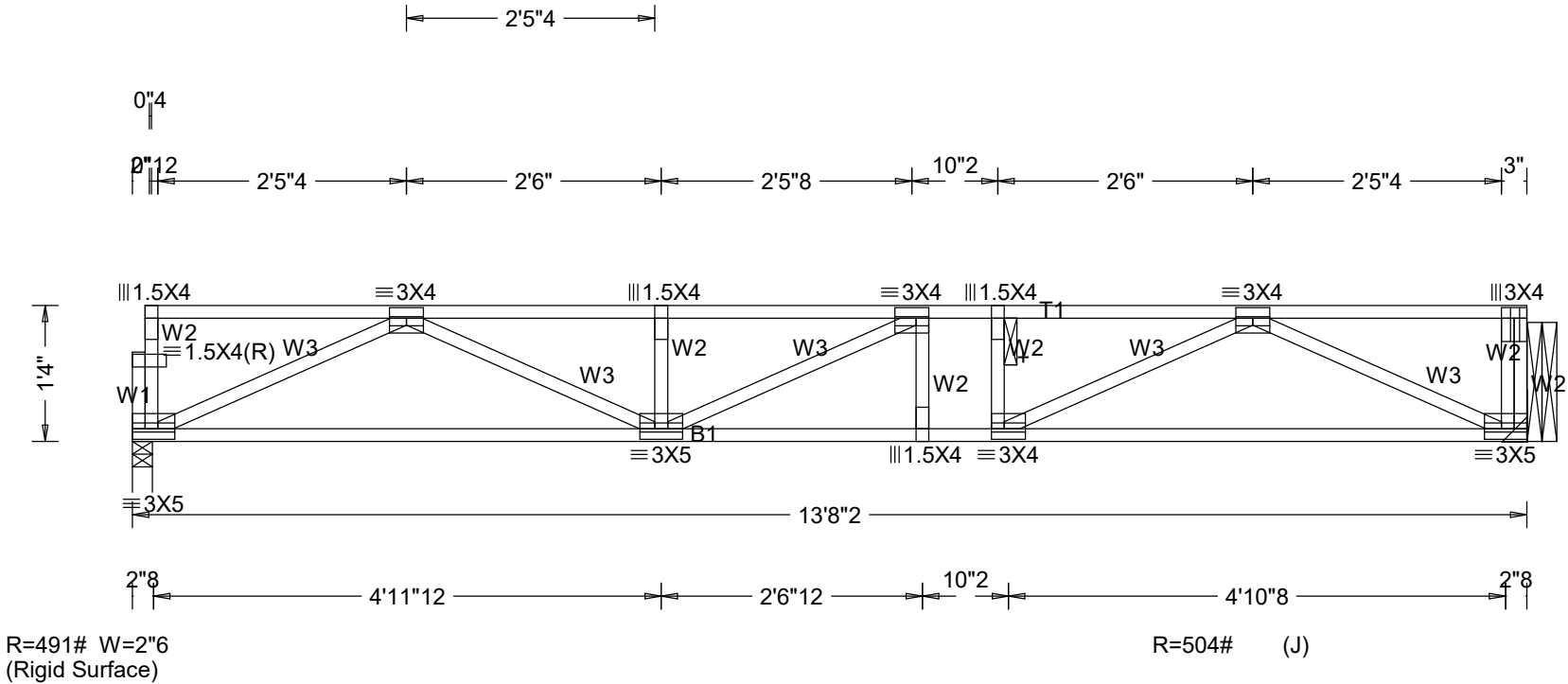
Top chord 4x2 SPF 1650f-1.5E  
Bot chord 4x2 SPF 1650f-1.5E  
Webs 4x2 SP #2

+ 2x6 continuous strongback. See detail STRBRIBR1014 for bracing and bridging recommendations.

Trusses to be spaced at 16.0" oc maximum.

Deflection meets L/360 live and L/240 total load. Creep increase factor for dead load is 2.00.

Truss must be installed as shown with top chord up.



LEFT JIG = 13'8"14

RIGHT JIG = 13'7"7  
SEQ = 130873  
SCALE = 0.5744

PLT. TYP.-WAVE DESIGN CRIT=IBC2018/TPI-2014 FT/RT=12%(0%)/ 0(0)

QTY= 9 TOTAL= 9

REV. 21.01.03A.0805.14

THIS DRAWING SHOULD BE APPROVED BY A REGISTERED PROFESSIONAL ENGINEER BEFORE USE. SEE PAGE A100 FOR GENERAL NOTES,IMPORTANT SPECIFICATIONS AND WARNINGS.

TC LL	40.0psf	REF
TC DL	10.0psf	DATE
BC DL	5.0psf	DRWG 10-21-2022
BC LL	0.0psf	
TOT.LD.	55.0psf	O/A LEN. 130802
DUR.FAC.	1.00	JOB #: D1021-754_22
SPACING	16.0"	TYPE SY42

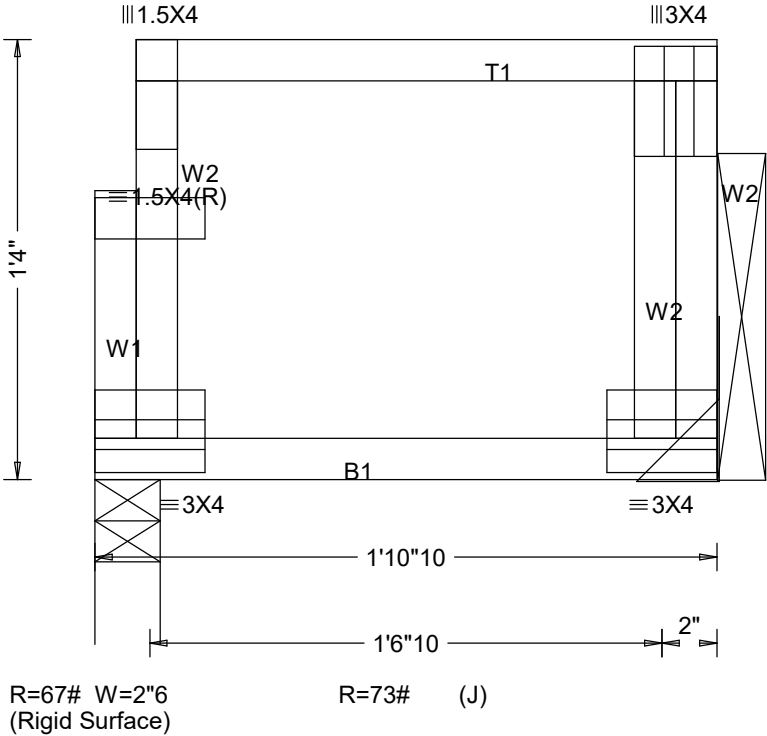
Top chord 4x2 SPF 1650f-1.5E  
Bot chord 4x2 SPF 1650f-1.5E  
Webs 4x2 SP #2

Fasten rated sheathing to one face of this frame.

Trusses to be spaced at 16.0" oc maximum.

Deflection meets L/360 live and L/240 total load. Creep increase factor for dead load is 2.00.

Truss must be installed as shown with top chord up.



LEFT JIG = 2'3"11

RIGHT JIG = 2'2"8  
SEQ = 130855  
SCALE = 1.7592

PLT. TYP.-WAVE DESIGN CRIT=IBC2018/TPI-2014 FT/RT=12%(0%)/ 0(0)

QTY= 2 TOTAL= 2

REV. 21.01.03A.0805.14

THIS DRAWING SHOULD BE APPROVED BY A REGISTERED PROFESSIONAL ENGINEER BEFORE USE. SEE PAGE A100 FOR GENERAL NOTES,IMPORTANT SPECIFICATIONS AND WARNINGS.

TC LL	40.0psf	REF
TC DL	10.0psf	DATE
BC DL	5.0psf	DRWG 10-21-2022
BC LL	0.0psf	
TOT.LD.	55.0psf	O/A LEN. 11010
DUR.FAC.	1.00	JOB #: D1021-754_22
SPACING	16.0"	TYPE SY42

Top chord 4x2 SPF 1650f-1.5E  
Bot chord 4x2 SPF 1650f-1.5E  
Webs 4x2 SP #2

Truss must be installed as shown with top chord up.

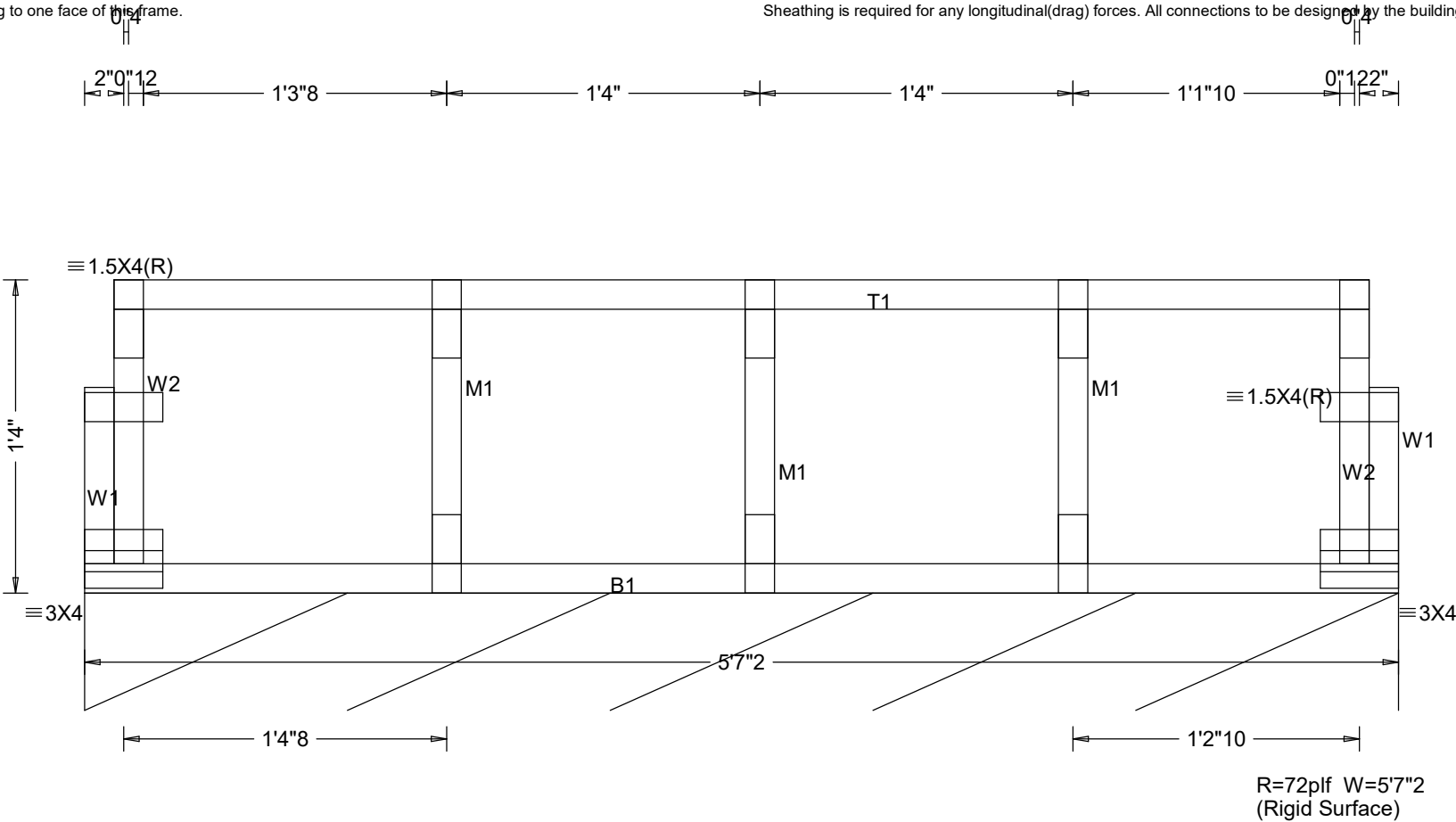
Fasten rated sheathing to one face of this frame.

All plates are 1.5X4 except as noted.

Trusses to be spaced at 16.0" oc maximum.

Deflection meets L/360 live and L/240 total load. Creep increase factor for dead load is 2.00.

Sheathing is required for any longitudinal(drag) forces. All connections to be designed by the building designer.



LEFT JIG = 5'7"9

PLT. TYP.-WAVE

DESIGN CRIT=IBC2018/TPI-2014 FT/RT=12%(0%)/ 0(0)

QTY= 1 TOTAL= 1

RIGHT JIG = 5'7"9

SEQ = 130857  
SCALE =1.4044

REV. 21.01.03A.0805.14

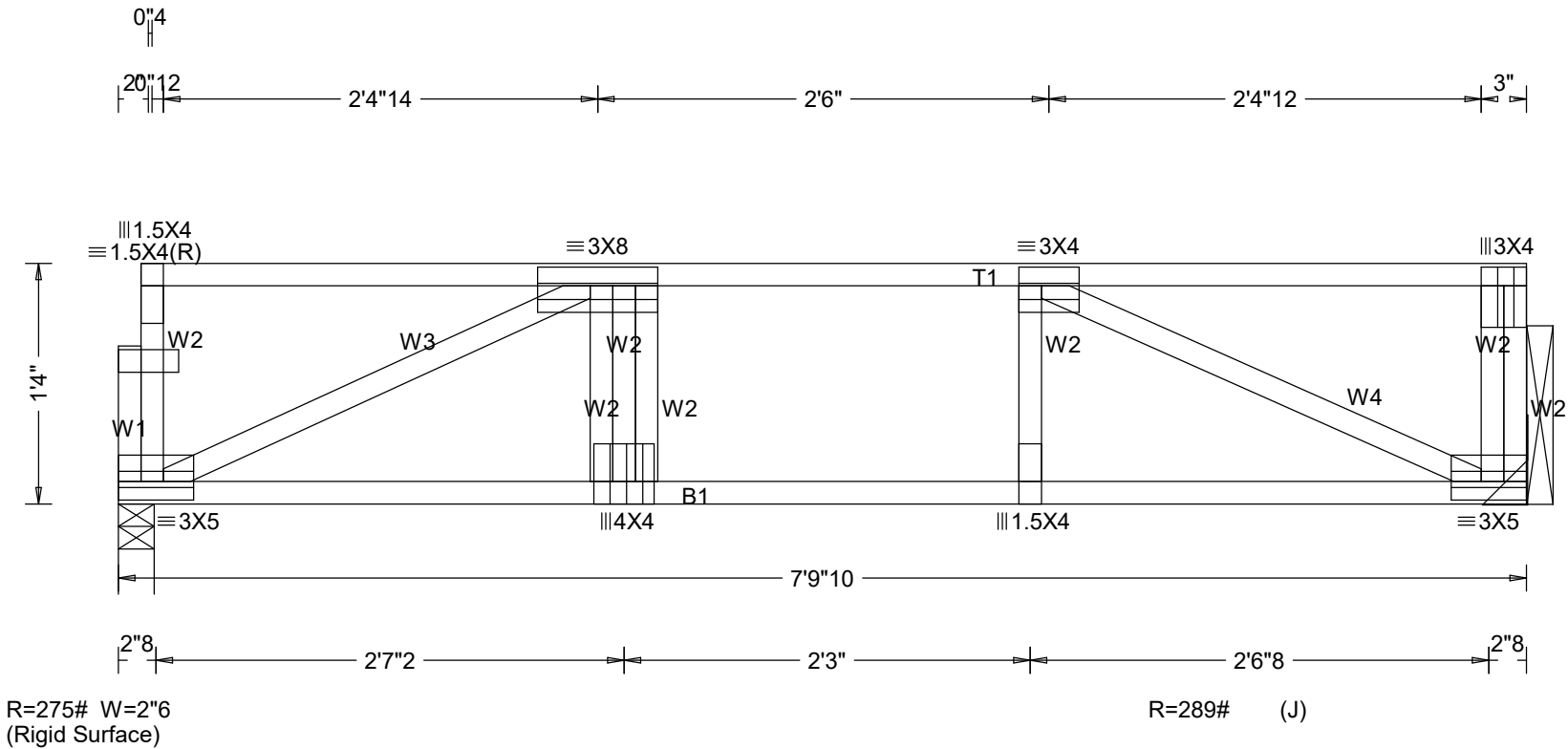
THIS DRAWING SHOULD BE APPROVED BY A REGISTERED  
PROFESSIONAL ENGINEER BEFORE USE. SEE PAGE A100  
FOR GENERAL NOTES,IMPORTANT SPECIFICATIONS AND  
WARNINGS.

TC LL	40.0psf
TC DL	10.0psf
BC DL	5.0psf
BC LL	0.0psf
TOT.LD.	55.0psf
DUR.FAC.	1.00
SPACING	16.0"

REF	
DATE	
DRWG	10-21-2022
O/A LEN.	50702
JOB #:	D1021-754_22
TYPE	SY42GABL

Top chord 4x2 SPF 1650f-1.5E  
Bot chord 4x2 SPF 1650f-1.5E  
Webs 4x2 SP #2

Trusses to be spaced at 16.0" oc maximum.  
Deflection meets L/360 live and L/240 total load. Creep increase factor for dead load is 2.00.  
Truss must be installed as shown with top chord up.

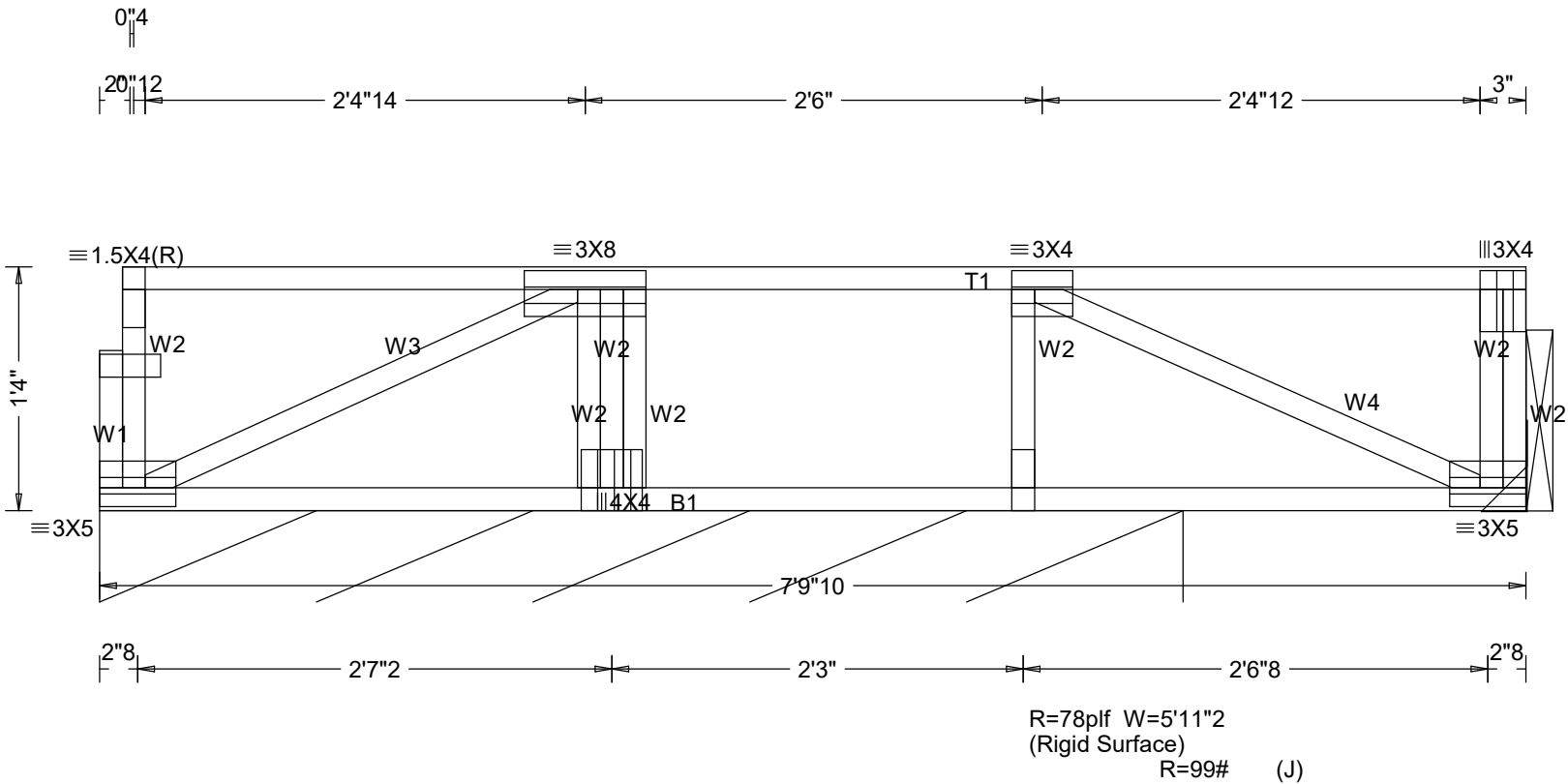


LEFT JIG = 7'11"		RIGHT JIG = 7'9"8	
PLT. TYP.-WAVE		SEQ = 130859	
DESIGN CRIT=IBC2018/TPI-2014 FT/RT=12%(0%)/ 0(0)		SCALE =1.0069	
QTY= 1 TOTAL= 1		REV. 21.01.03A.0805.14	
THIS DRAWING SHOULD BE APPROVED BY A REGISTERED PROFESSIONAL ENGINEER BEFORE USE. SEE PAGE A100 FOR GENERAL NOTES,IMPORTANT SPECIFICATIONS AND WARNINGS.		TC LL	40.0psf
		TC DL	10.0psf
		BC DL	5.0psf
		BC LL	0.0psf
		TOT.LD.	55.0psf
		DUR.FAC.	1.00
		SPACING	16.0"
		REF	
		DATE	
		DRWG	10-21-2022
		O/A LEN.	70910
		JOB #:	D1021-754_22
		TYPE	SY42

Top chord 4x2 SPF 1650f-1.5E  
Bot chord 4x2 SPF 1650f-1.5E  
Webs 4x2 SP #2

Truss must be installed as shown with top chord up.

All plates are 1.5X4 except as noted.  
Trusses to be spaced at 16.0" oc maximum.  
Deflection meets L/360 live and L/240 total load. Creep increase factor for dead load is 2.00.



LEFT JIG = 7'11"

RIGHT JIG = 7'9"8  
SEQ = 130861  
SCALE =1.0069

PLT. TYP.-WAVE      DESIGN CRIT=IBC2018/TPI-2014 FT/RT=12%(0%)/ 0(0)

QTY= 1 TOTAL= 1

REV. 21.01.03A.0805.14

THIS DRAWING SHOULD BE APPROVED BY A REGISTERED PROFESSIONAL ENGINEER BEFORE USE. SEE PAGE A100 FOR GENERAL NOTES,IMPORTANT SPECIFICATIONS AND WARNINGS.

TC LL	40.0psf	REF
TC DL	10.0psf	DATE
BC DL	5.0psf	DRWG 10-21-2022
BC LL	0.0psf	
TOT.LD.	55.0psf	O/A LEN. 70910
DUR.FAC.	1.00	JOB #: D1021-754_22
SPACING	16.0"	TYPE SY42

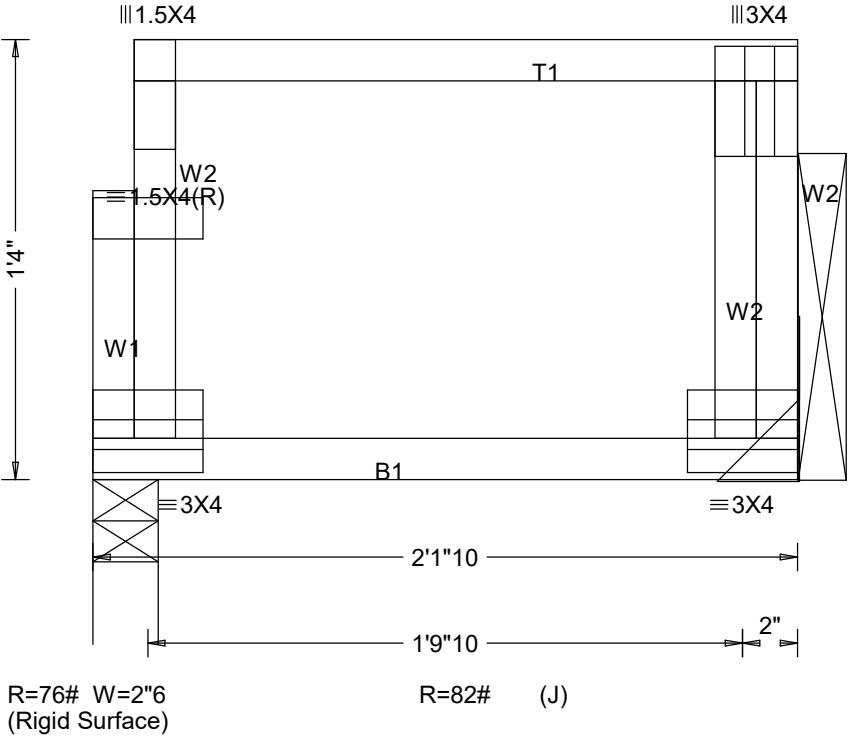
Top chord 4x2 SPF 1650f-1.5E  
Bot chord 4x2 SPF 1650f-1.5E  
Webs 4x2 SP #2

Trusses to be spaced at 16.0" oc maximum.

Deflection meets L/360 live and L/240 total load. Creep increase factor for dead load is 2.00.

Truss must be installed as shown with top chord up.

Fasten rated sheathing to one face of this frame.



LEFT JIG = 2'6"3

RIGHT JIG = 2'4"15  
SEQ = 130863  
SCALE = 1.7592

PLT. TYP.-WAVE

DESIGN CRIT=IBC2018/TPI-2014 FT/RT=12%(0%)/ 0(0)

QTY= 2 TOTAL= 2

REV. 21.01.03A.0805.14

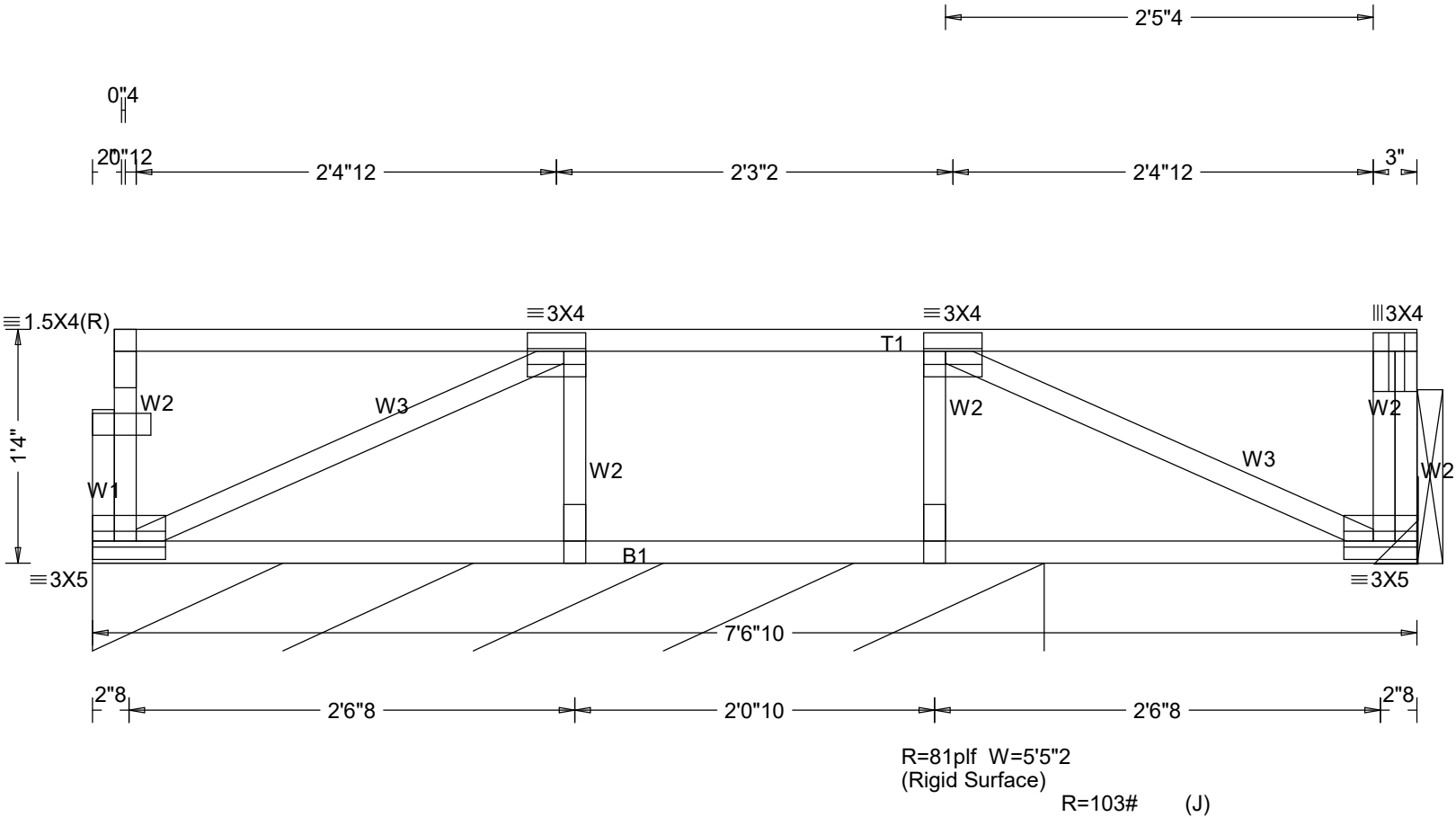
THIS DRAWING SHOULD BE APPROVED BY A REGISTERED PROFESSIONAL ENGINEER BEFORE USE. SEE PAGE A100 FOR GENERAL NOTES,IMPORTANT SPECIFICATIONS AND WARNINGS.

TC LL	40.0psf	REF
TC DL	10.0psf	DATE
BC DL	5.0psf	DRWG 10-21-2022
BC LL	0.0psf	
TOT.LD.	55.0psf	O/A LEN. 20110
DUR.FAC.	1.00	JOB #: D1021-754_22
SPACING	16.0"	TYPE SY42

Top chord 4x2 SPF 1650f-1.5E  
Bot chord 4x2 SPF 1650f-1.5E  
Webs 4x2 SP #2

Truss must be installed as shown with top chord up.

All plates are 1.5X4 except as noted.  
Trusses to be spaced at 16.0" oc maximum.  
Deflection meets L/360 live and L/240 total load. Creep increase factor for dead load is 2.00.



LEFT JIG = 7'8"

RIGHT JIG = 7'6"9  
SEQ = 130877  
SCALE = 1.0402

PLT. TYP.-WAVE

DESIGN CRIT=IBC2018/TPI-2014 FT/RT=12%(0%)/ 0(0)

QTY= 1 TOTAL= 1

REV. 21.01.03A.0805.14

THIS DRAWING SHOULD BE APPROVED BY A REGISTERED PROFESSIONAL ENGINEER BEFORE USE. SEE PAGE A100 FOR GENERAL NOTES,IMPORTANT SPECIFICATIONS AND WARNINGS.

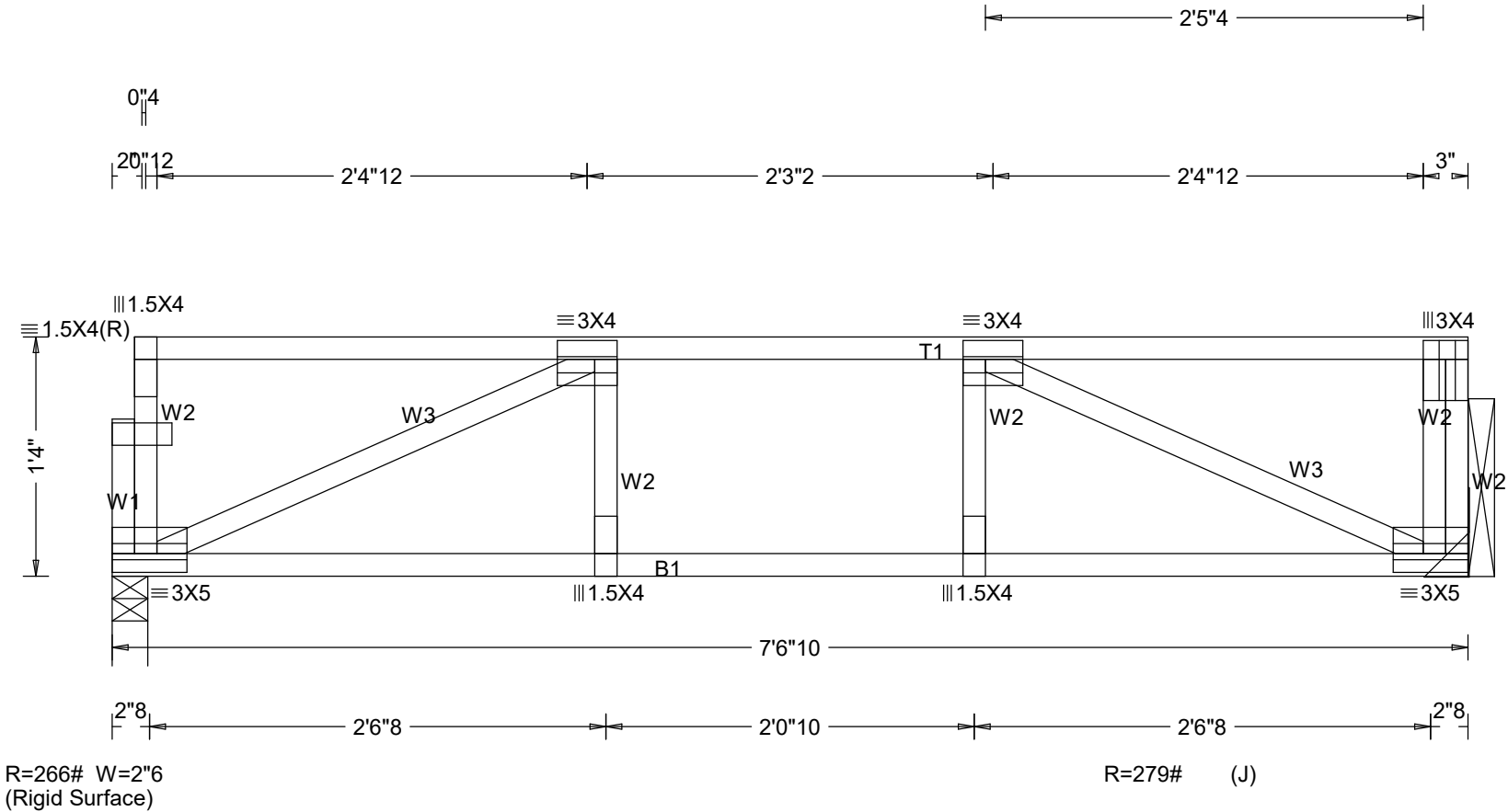
TC LL	40.0psf	REF
TC DL	10.0psf	DATE
BC DL	5.0psf	DRWG 10-21-2022
BC LL	0.0psf	
TOT.LD.	55.0psf	O/A LEN. 70610
DUR.FAC.	1.00	JOB #: D1021-754_22
SPACING	16.0"	TYPE SY42

Top chord 4x2 SPF 1650f-1.5E  
Bot chord 4x2 SPF 1650f-1.5E  
Webs 4x2 SP #2

Trusses to be spaced at 16.0" oc maximum.

Deflection meets L/360 live and L/240 total load. Creep increase factor for dead load is 2.00.

Truss must be installed as shown with top chord up.



LEFT JIG = 7'8"

RIGHT JIG = 7'6"9  
SEQ = 130879  
SCALE = 1.0402

PLT. TYP.-WAVE DESIGN CRIT=IBC2018/TPI-2014 FT/RT=12%(0%)/ 0(0)

QTY= 1 TOTAL= 1

REV. 21.01.03A.0805.14

THIS DRAWING SHOULD BE APPROVED BY A REGISTERED PROFESSIONAL ENGINEER BEFORE USE. SEE PAGE A100 FOR GENERAL NOTES,IMPORTANT SPECIFICATIONS AND WARNINGS.

TC LL	40.0psf	REF
TC DL	10.0psf	DATE
BC DL	5.0psf	DRWG 10-21-2022
BC LL	0.0psf	
TOT.LD.	55.0psf	O/A LEN. 70610
DUR.FAC.	1.00	JOB #: D1021-754_22
SPACING	16.0"	TYPE SY42

Top chord 4x2 SPF 1650f-1.5E  
Bot chord 4x2 SPF 1650f-1.5E  
Webs 4x2 SP #2

Truss must be installed as shown with top chord up.

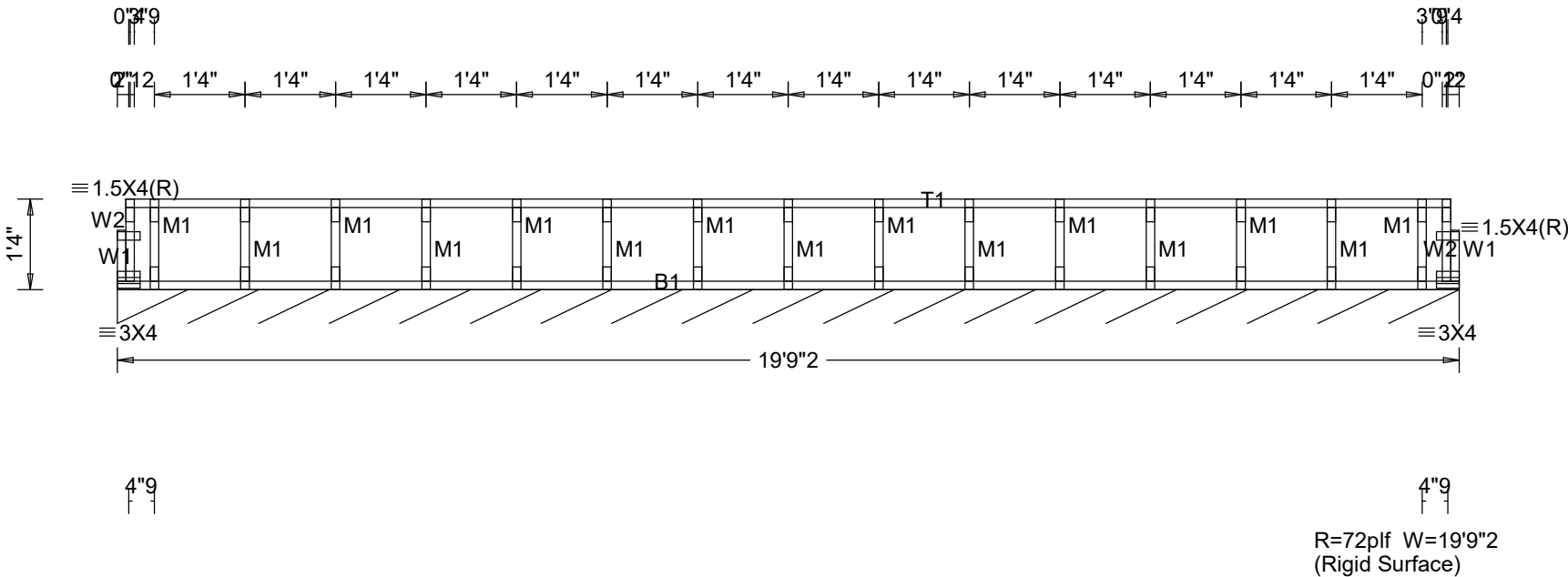
Fasten rated sheathing to one face of this frame.

All plates are 1.5X4 except as noted.

Trusses to be spaced at 16.0" oc maximum.

Deflection meets L/360 live and L/240 total load. Creep increase factor for dead load is 2.00.

Sheathing is required for any longitudinal(drag) forces. All connections to be designed by the building designer.



LEFT JIG = 19'8"3

RIGHT JIG = 19'8"3  
SEQ = 130881  
SCALE = 0.3976

PLT. TYP.-WAVE      DESIGN CRIT=IBC2018/TPI-2014 FT/RT=12%(0%)/ 0(0)

QTY= 1 TOTAL= 1

REV. 21.01.03A.0805.14

THIS DRAWING SHOULD BE APPROVED BY A REGISTERED  
PROFESSIONAL ENGINEER BEFORE USE. SEE PAGE A100  
FOR GENERAL NOTES,IMPORTANT SPECIFICATIONS AND  
WARNINGS.

TC LL	40.0psf	REF
TC DL	10.0psf	DATE
BC DL	5.0psf	DRWG 10-21-2022
BC LL	0.0psf	
TOT.LD.	55.0psf	O/A LEN. 190902
DUR.FAC.	1.00	JOB #: D1021-754_22
SPACING	16.0"	TYPE SY42GABL

All plates are 1.5X4 except as noted.

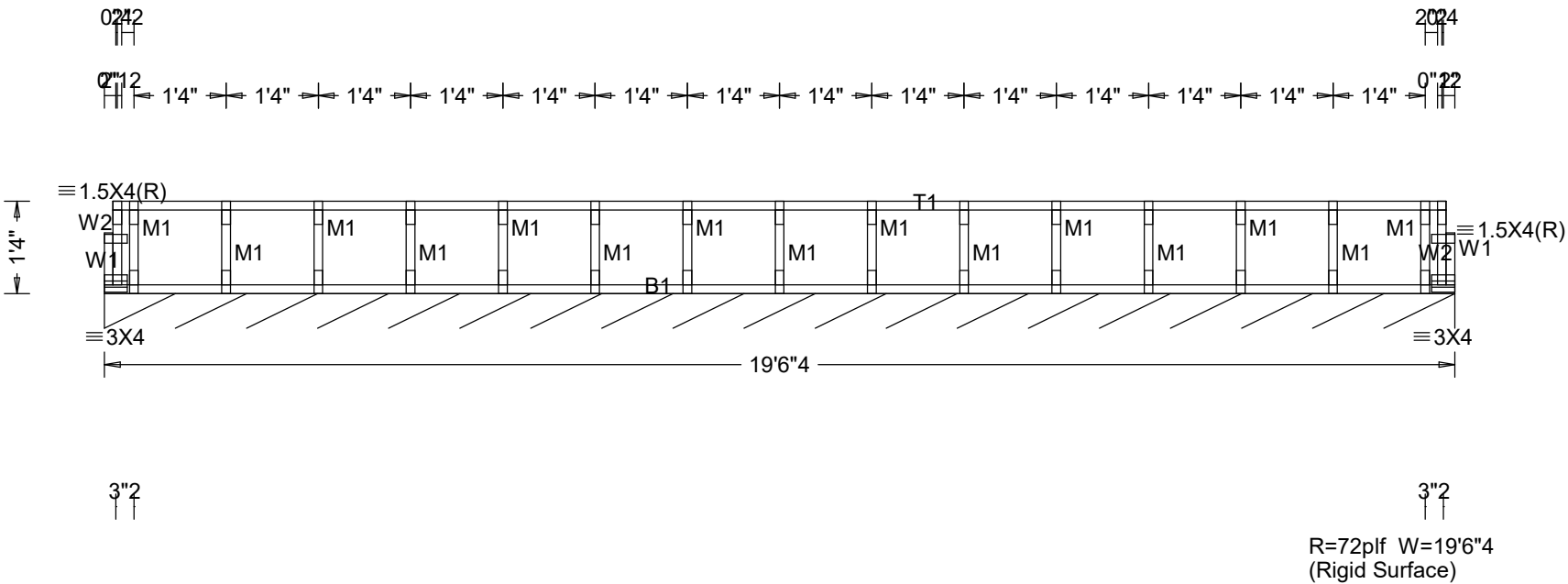
See detail STRBRIBR1014 for bracing and bridging recommendations.

Trusses to be spaced at 16.0" oc maximum.

Truss must be installed as shown with top chord up.

Fasten rated sheathing to one face of this frame.

Sheathing is required for any longitudinal(drag) forces. All connections to be designed by the building designer.



RIGHT JIG = 19'5"5  
SEQ = 130883  
14 SCALE = 0.4024

QTY= 1 TOTAL= 1

REV. 21.01.03A.0805.14

TC LL	40.0psf	REF
TC DL	10.0psf	DATE
BC DL	5.0psf	DRWG 10-21-2022
BC LL	0.0psf	
TOT.LD.	55.0psf	O/A LEN. 190604
DUR.FAC.	1.00	JOB #: D1021-754_22
SPACING	16.0"	TYPE SY42GABL

Fasten rated sheathing to one face of this frame.

