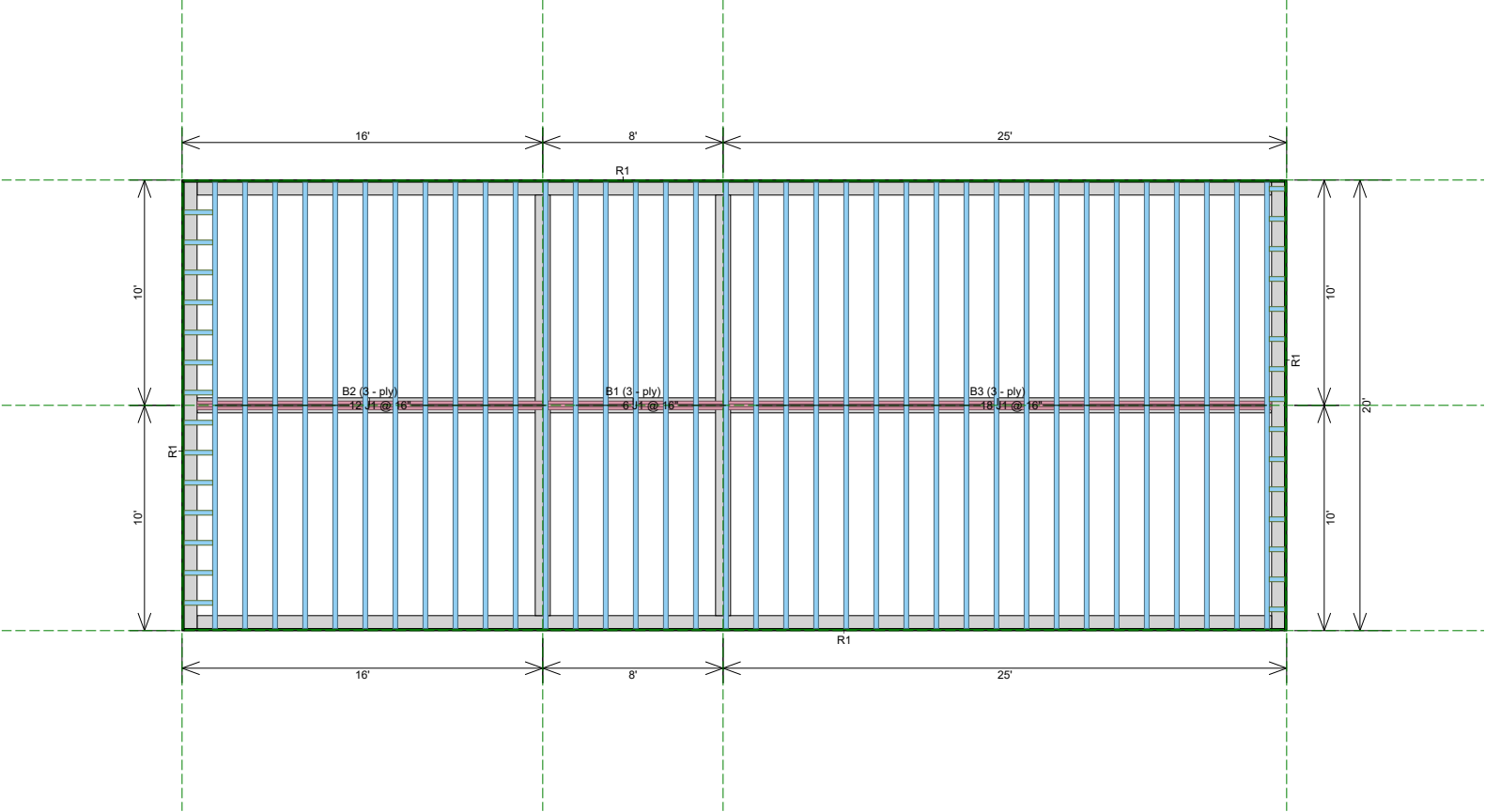






Ground Floor



| I Joist | | | | | | | |
|-----------|------------------------------|-------|-------|-------|-------|--------|--------|
| Label | Description | Width | Depth | Qty | Plies | Pcs | Length |
| J1 | PKI20 | 2.5 | 9.5 | | | 36 | 20-0-0 |
| Rim Board | | | | | | | |
| Label | Description | Width | Depth | Qty | Plies | Pcs | Length |
| R1 | Common Rim Board 1.125 X 9.5 | 1.125 | 9.5 | | | 12 | 12-0-0 |
| Blocking | | | | | | | |
| Label | Description | Width | Depth | Qty | Plies | Pcs | Length |
| BLK2 | PKI20 | 2.5 | 9.5 | LinFt | | Varies | 28-0-0 |
| Lumber | | | | | | | |
| Label | Description | Width | Depth | Qty | Plies | Pcs | Length |
| B1 | S-P-F #2 | 1.5 | 9.25 | 1 | 3 | 3 | 10-0-0 |
| B2 | S-P-F #2 | 1.5 | 9.25 | 1 | 3 | 3 | 16-0-0 |
| B3 | S-P-F #2 | 1.5 | 9.25 | 1 | 3 | 3 | 26-0-0 |

| | |
|--|--|
| Layout Name | |
| WY Project | |
| Design Method | |
| LSD | |
| Description | |
| Created | |
| December 08, 2023 | |
| Builder | |
| Riverbend Building Supply | |
| Sales Rep | |
| Designer | |
| April | |
| Shipping | |
| 4 Sauk Path, Boulder WY 82923 in March | |
| Project | |
| Builder's Project | |
| EZ SIPS Corporation | |

| Ground Floor | |
|---------------------------|----------------|
| Design Method | LSD (Canada) |
| Building Code | NBCC 2015 |
| Floor | |
| Loads | |
| Live | 40 |
| Dead | 30 |
| Deflection Joist | |
| LL Span L/ | 480 |
| TL Span L/ | 240 |
| Deflection Flush Girder | |
| LL Span L/ | 480 |
| TL Span L/ | 240 |
| Deflection Dropped Girder | |
| LL Span L/ | 480 |
| TL Span L/ | 240 |
| Deflection Header | |
| LL Span L/ | 480 |
| TL Span L/ | 240 |
| Decking | |
| Decking | SPF Plywood |
| Thickness | 5/8" |
| Fastener | Nailed & Glued |
| Vibration | |

| Legend | |
|---|------------------------------|
|  | Wall |
|  | Common Rim Board 1.125 X 9.5 |
|  | PKI20 9.5 |
|  | S-P-F #2 1.5 X 9.25 |