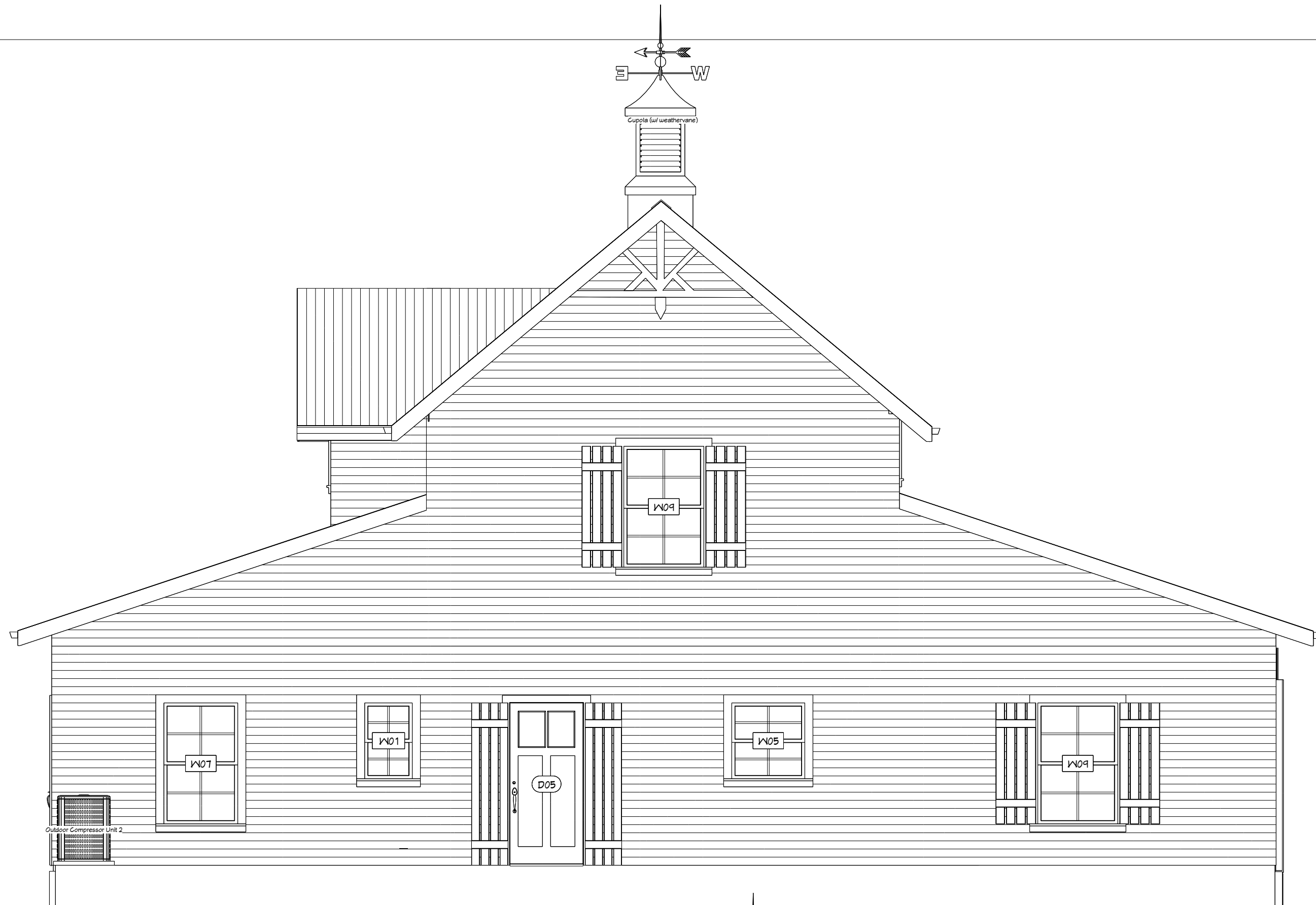
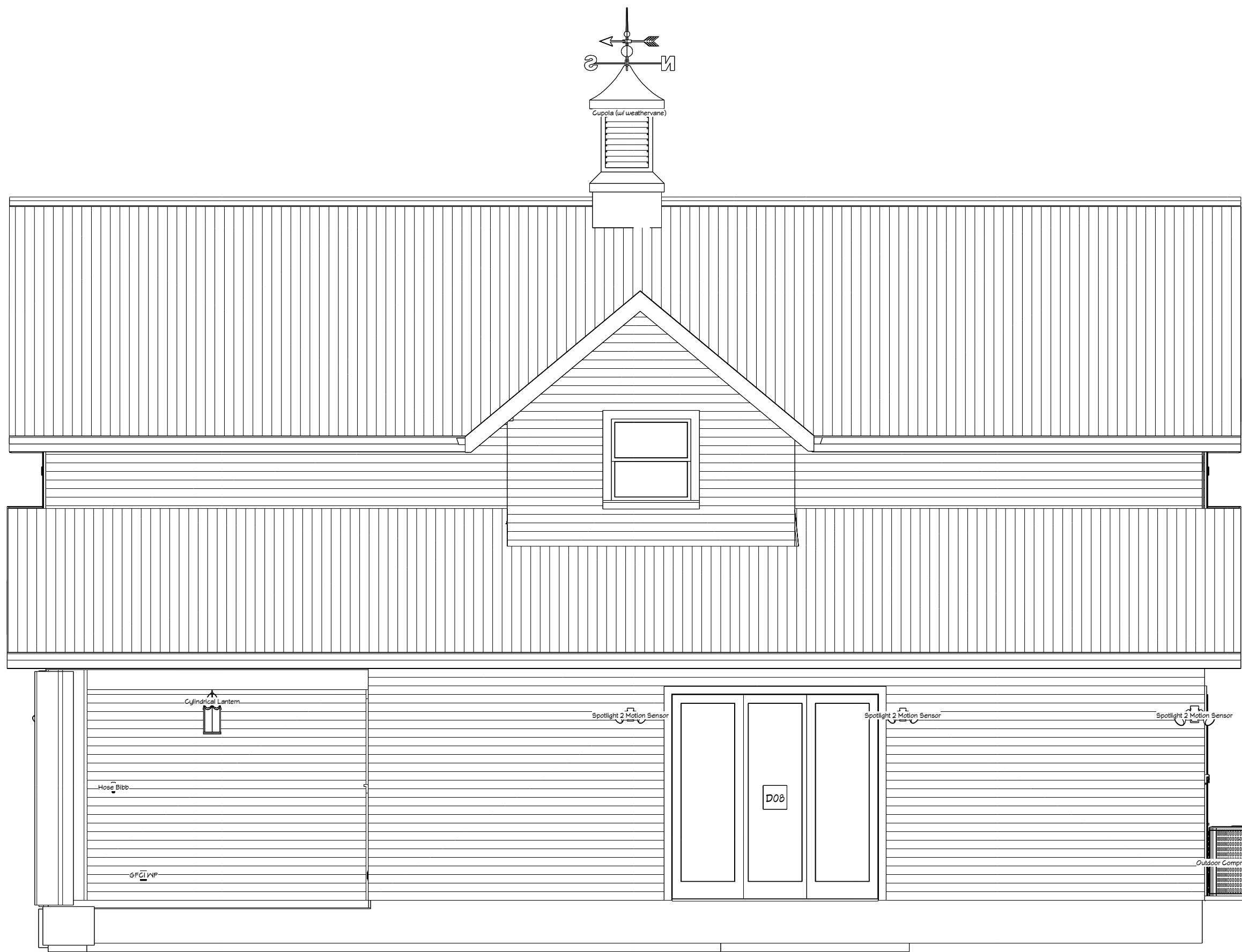


FRONT VIEW



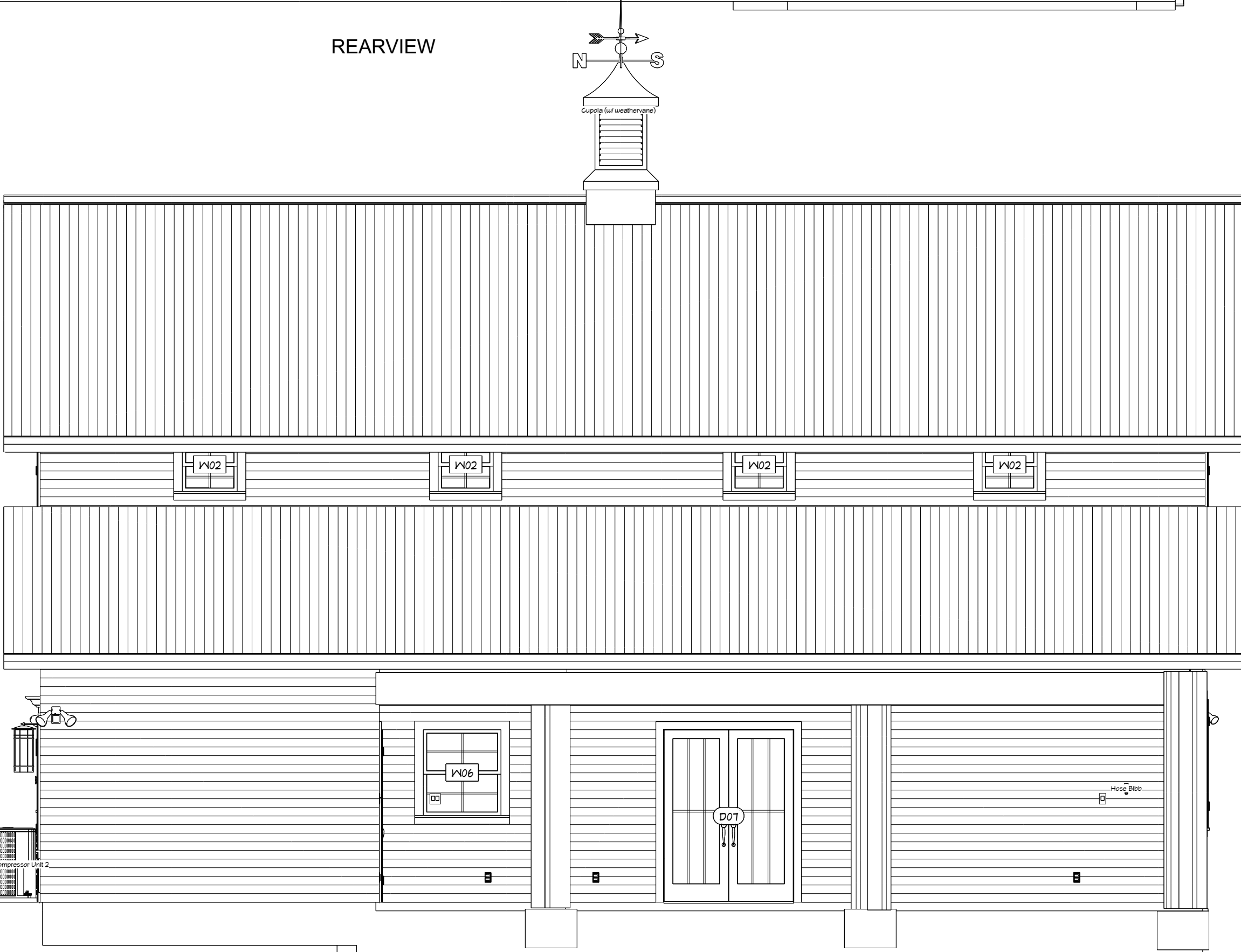
REARVIEW



RIGHT SIDE VIEW

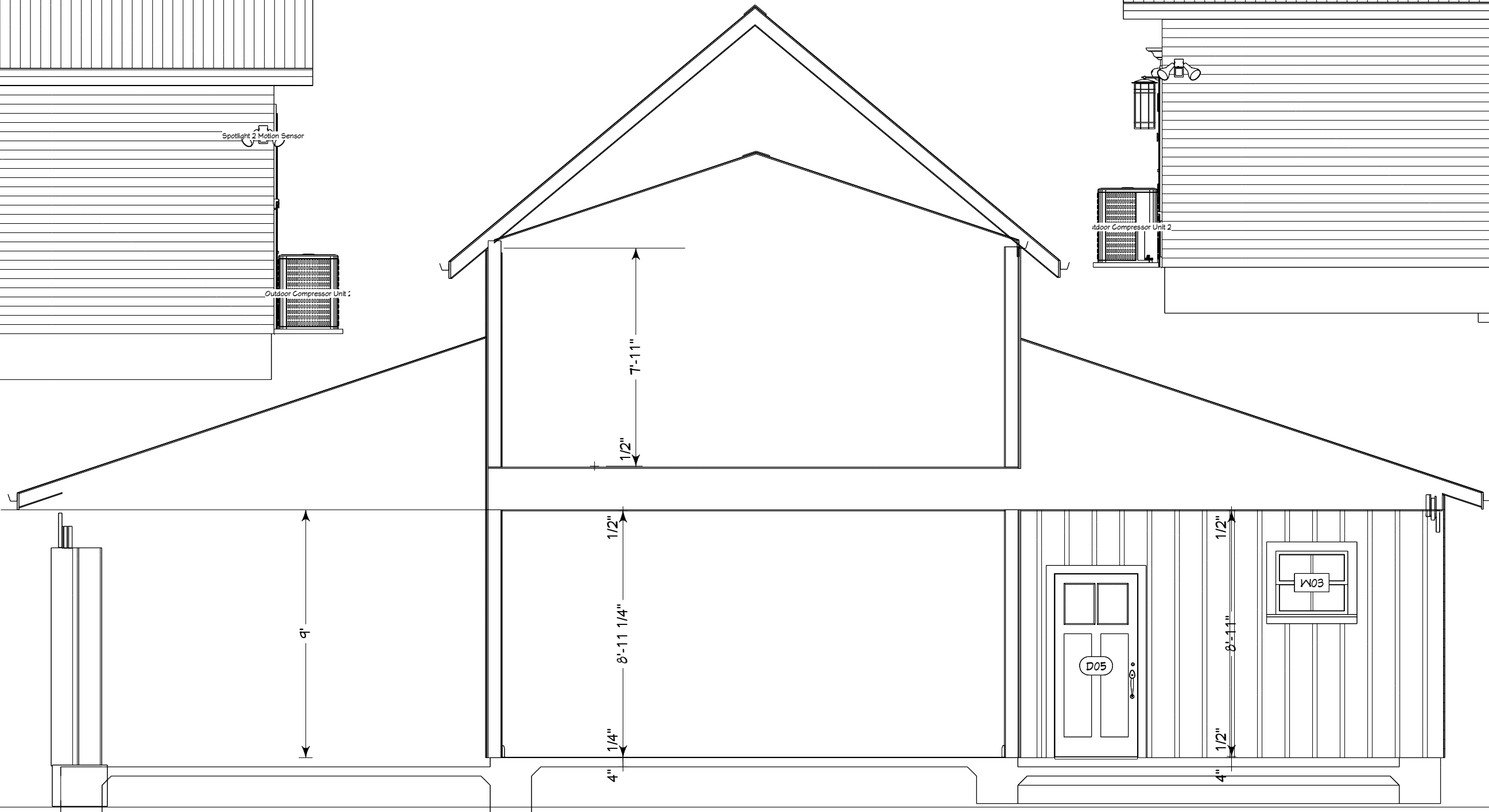
DOOR SCHEDULE					
NUMBER	QTY	SIZE	R/O	DESCRIPTION	HINGE
D01	1	2688	65"X81 1/2"	POCKET 4-PANEL	HIDDEN (2)
D02	1	2688	31"X81 1/2"	HINGED 4-PANEL	HIDDEN (2)
D03	1	2160	32 3/16"X81 1/2"	HINGED 4-PANEL	HIDDEN (2)
D04	5	2068	39"X81 1/2"	HINGED 4-PANEL	HIDDEN (2)
D05	2	3068	31"X81 1/2"	EXT. HINGED DOOR E20	HIDDEN (5)
D06	1	3068	31"X81 1/2"	2 DR. BIFOLD-SLAB	HIDDEN (2)
D07	2	5068	61"X81 1/2"	EXT. DOUBLE HINGED-GLASS PANEL	HIDDEN (6)
D08	1	6068	19"X81 1/2"	EXT. DOUBLE HINGED-GLASS PANEL	HIDDEN (6)

WINDOW SCHEDULE					
NUMBER	QTY	SIZE	R/O	EGRESS	TEMPERED
W01	1	11131	23 1/8"X31 7/8"		YES
W02	4	2221	26"X25 1/2"		YES
W03	1	2724	31 1/8"X25 1/8"		YES
W04	1	3031	36 1/2"X31 7/8"		YES
W05	1	3031	36 1/2"X31 7/8"		YES
W06	1	3034	36 1/2"X40 1/4"		YES
W07	1	3030	36 1/8"X60 1/8"		YES
W08	2	3350	39 1/8"X60 1/8"		YES
W09	3	3350	39 1/8"X60 1/8"		YES



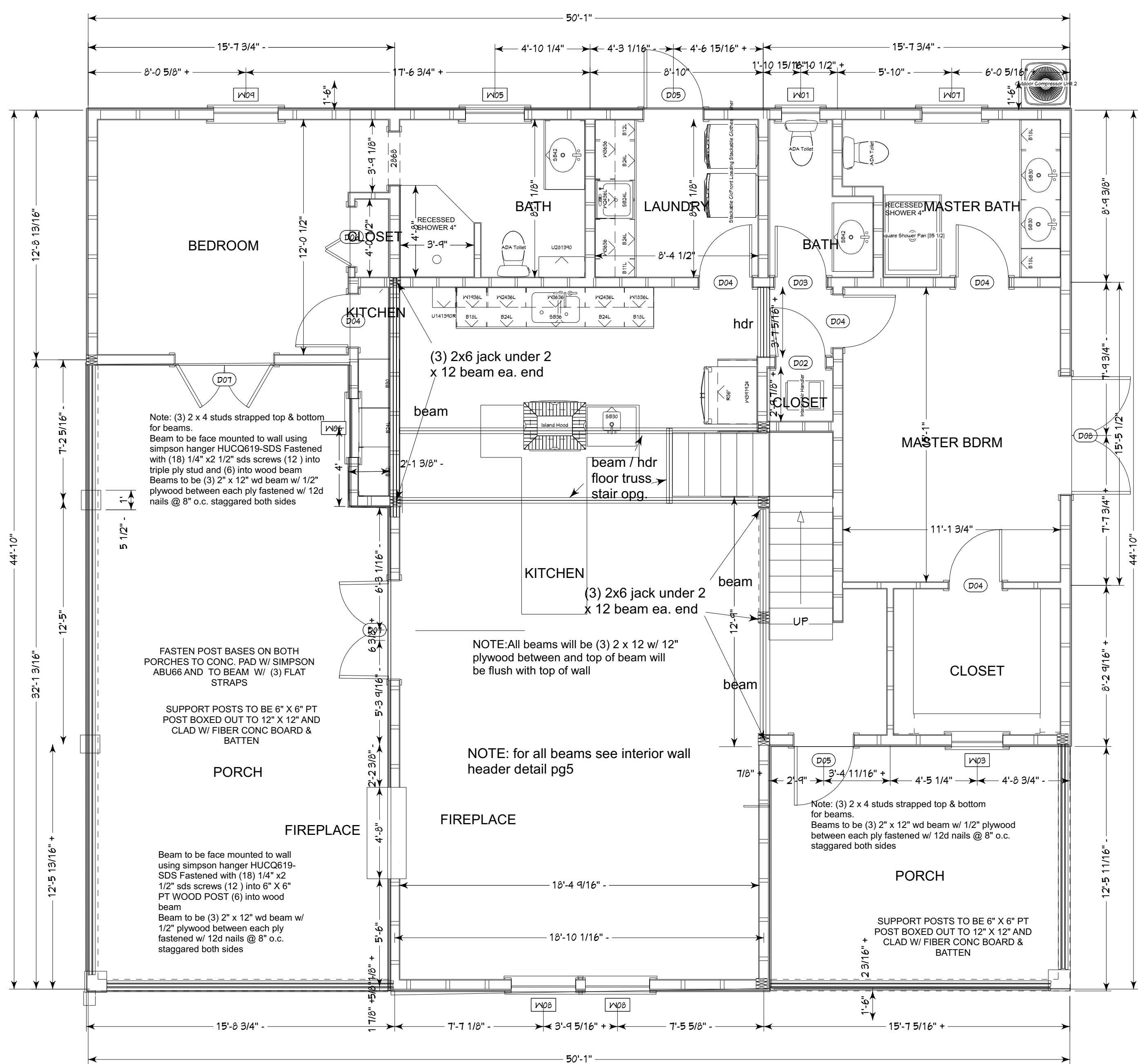
LEFT SIDE VIEW

AREA:	
LIVING (A/C) SPACE	1596
LEFT SIDE PORCH	477
RIGHT FRONT ENTRY	188
2ND FL UNFINISHED ATTIC	786
TOTAL AREA	3047



EXTERIOR FINISH:  
ROOF STEEL  
EXT WALLS MAIN CEMENT COMP CLAPBOARD SIDING  
PORCH WALLS AS SHOWN VERT. BOARD & BATTEN COMPOSITION SIDING  
COLUMNS 6 X 6 PT WOOD BEAMS BUILT OUT AND TRIMMED WITH VERT BOARD AND BATTEN SIDING

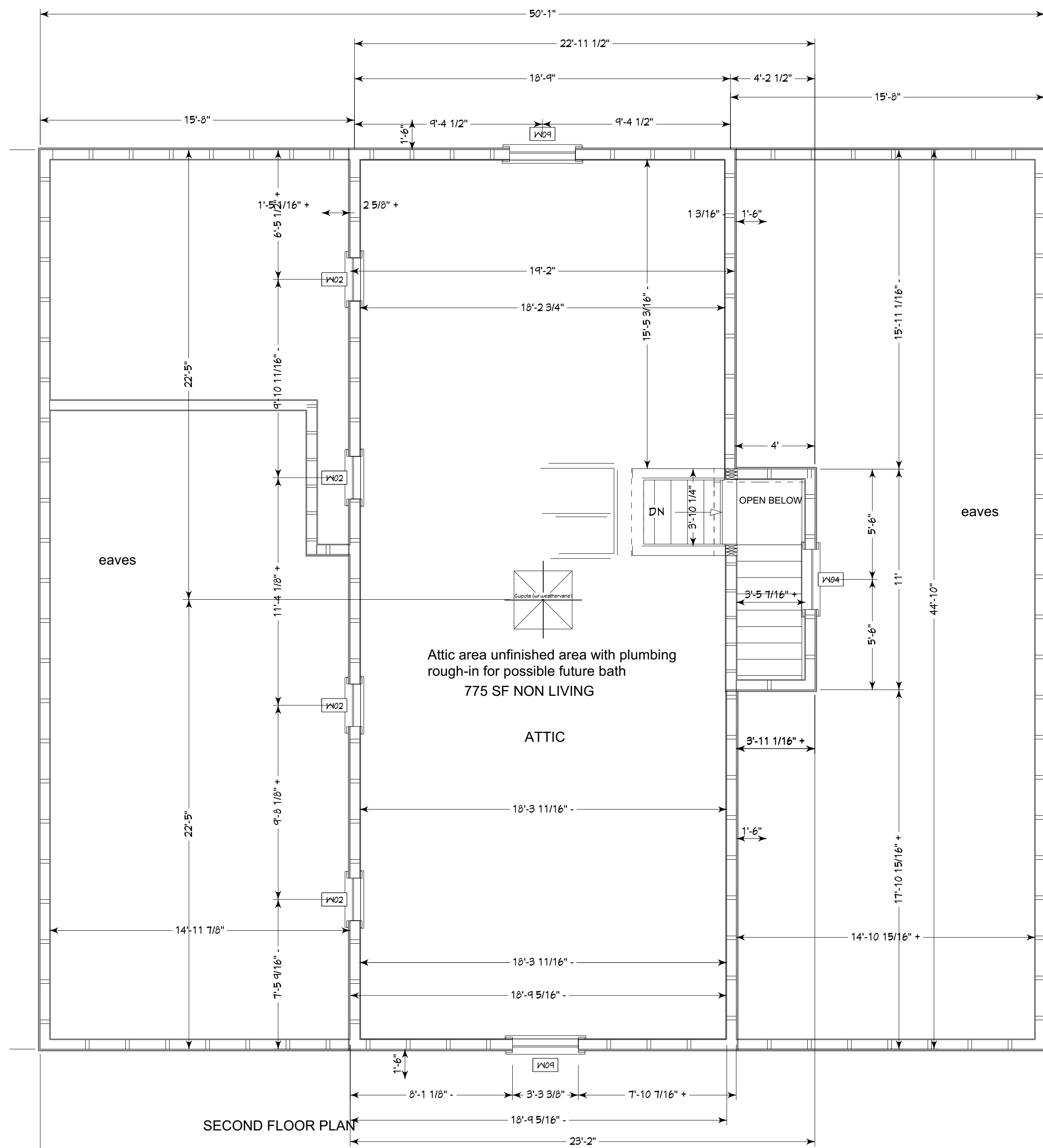
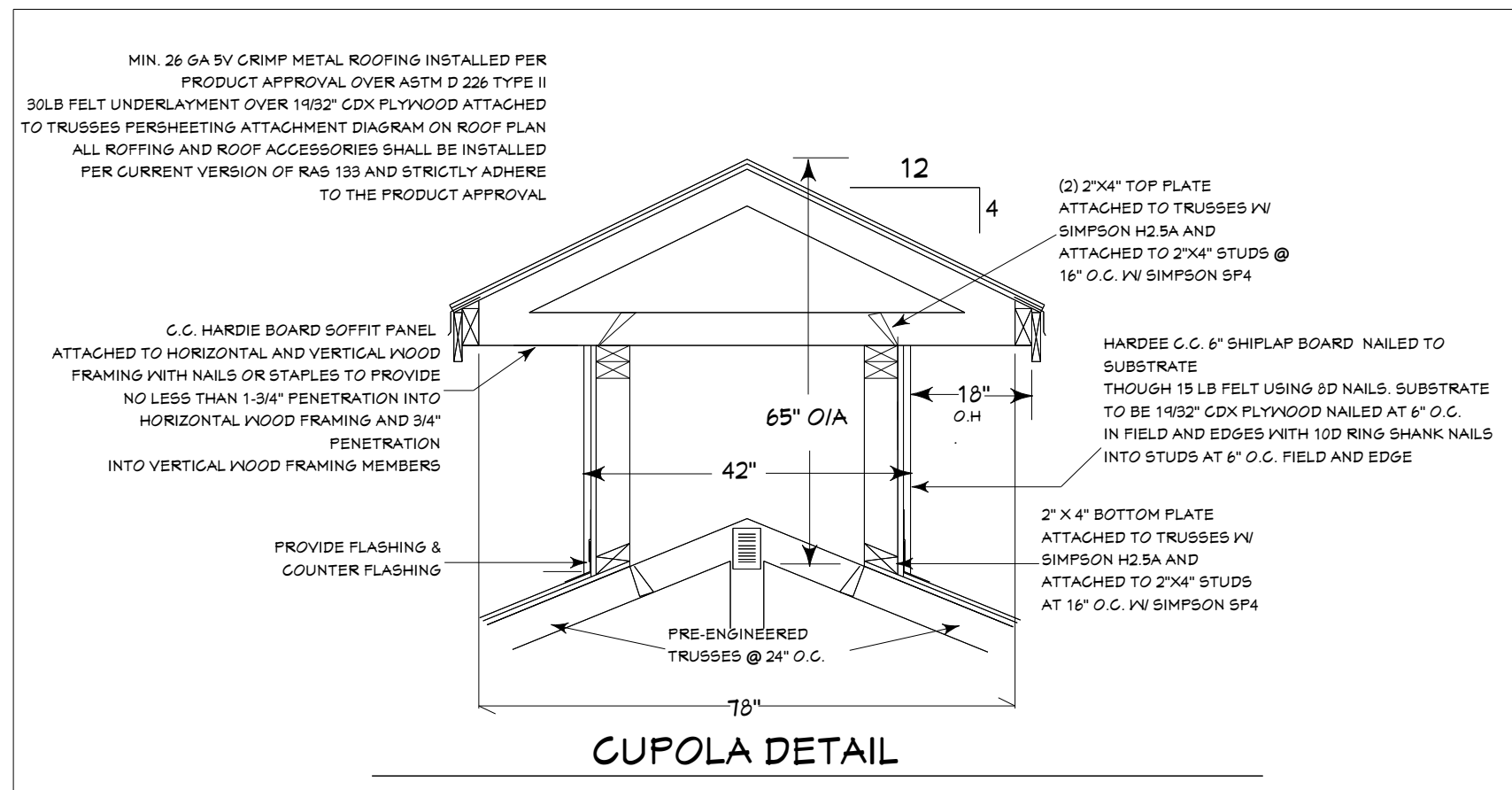
PROJ. \_\_\_\_\_  
DRWN. \_\_\_\_\_  
DATE. \_\_\_\_\_  
SHEET



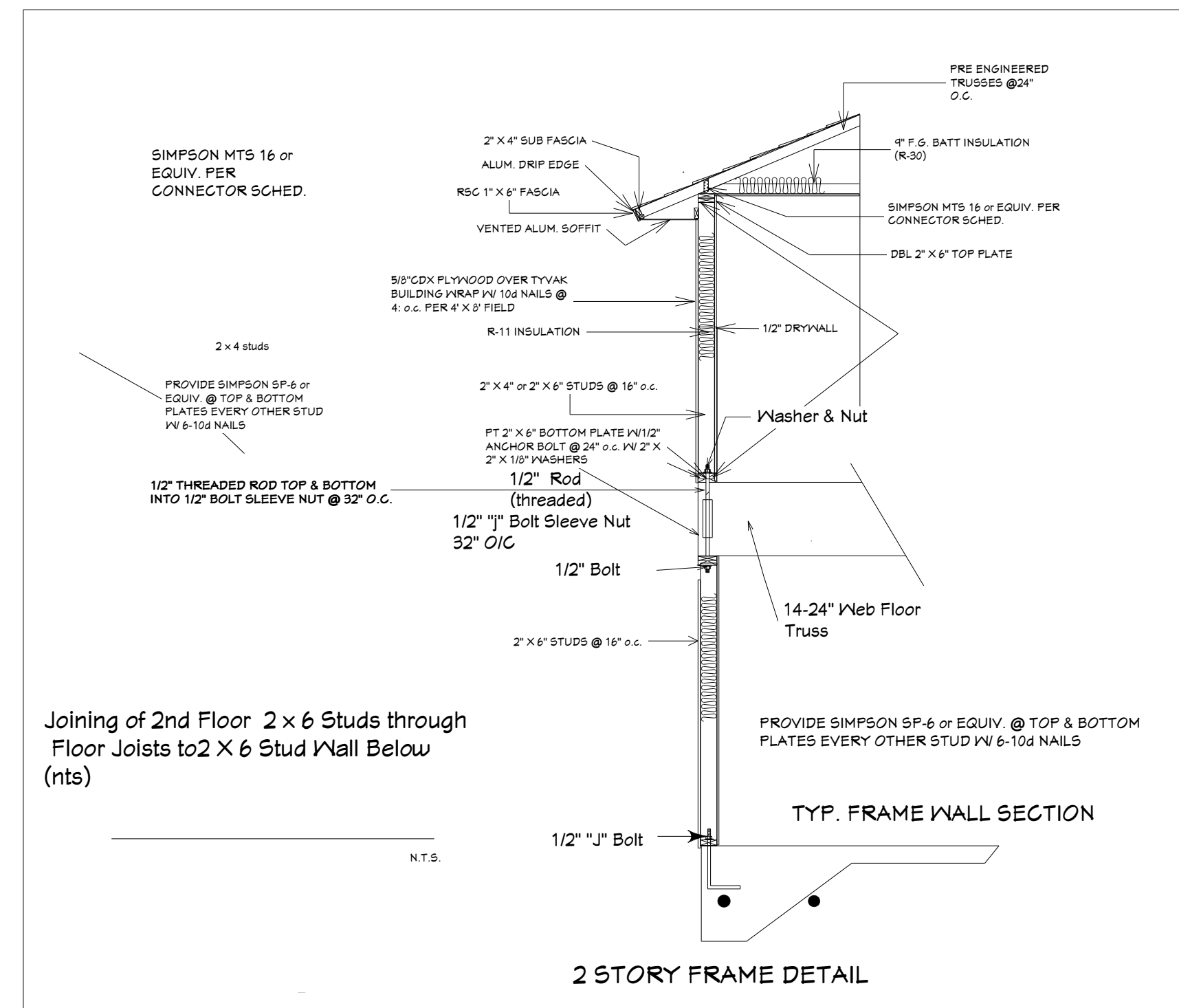
NOTE:  
EXTERIOR & BEARING WALLS ON FLOORS 1 AND 2 WILL BE 2X6 FRAMING @ 16" o.c.  
NON BEARING DIVISION WALLS WILL BE 2X4 FRAMING @ 16" o.c.  
2nd FLOOR WILL BE 18" WEB TRUSSES WITH THREADED ROD FROM TOP PLATE OF 1st FLOOR THRU TRUSSES AND THRU BOTTOM PLATE OF 2nd FLOOR WALL AND FASTENED W/ WASHER & NUT (SEE DETAIL)

NOTE: EXTERIOR SPECS.  
ROOF MATERIAL WILL BE TO BE METAL (TO BE CHOSEN)  
SIDING TO BE HARDIE PLANK SIDING (TO BE CHOSEN)  
SOFFIT MATERIAL TO BE VYINYL

FIRST FLOOR PLAN

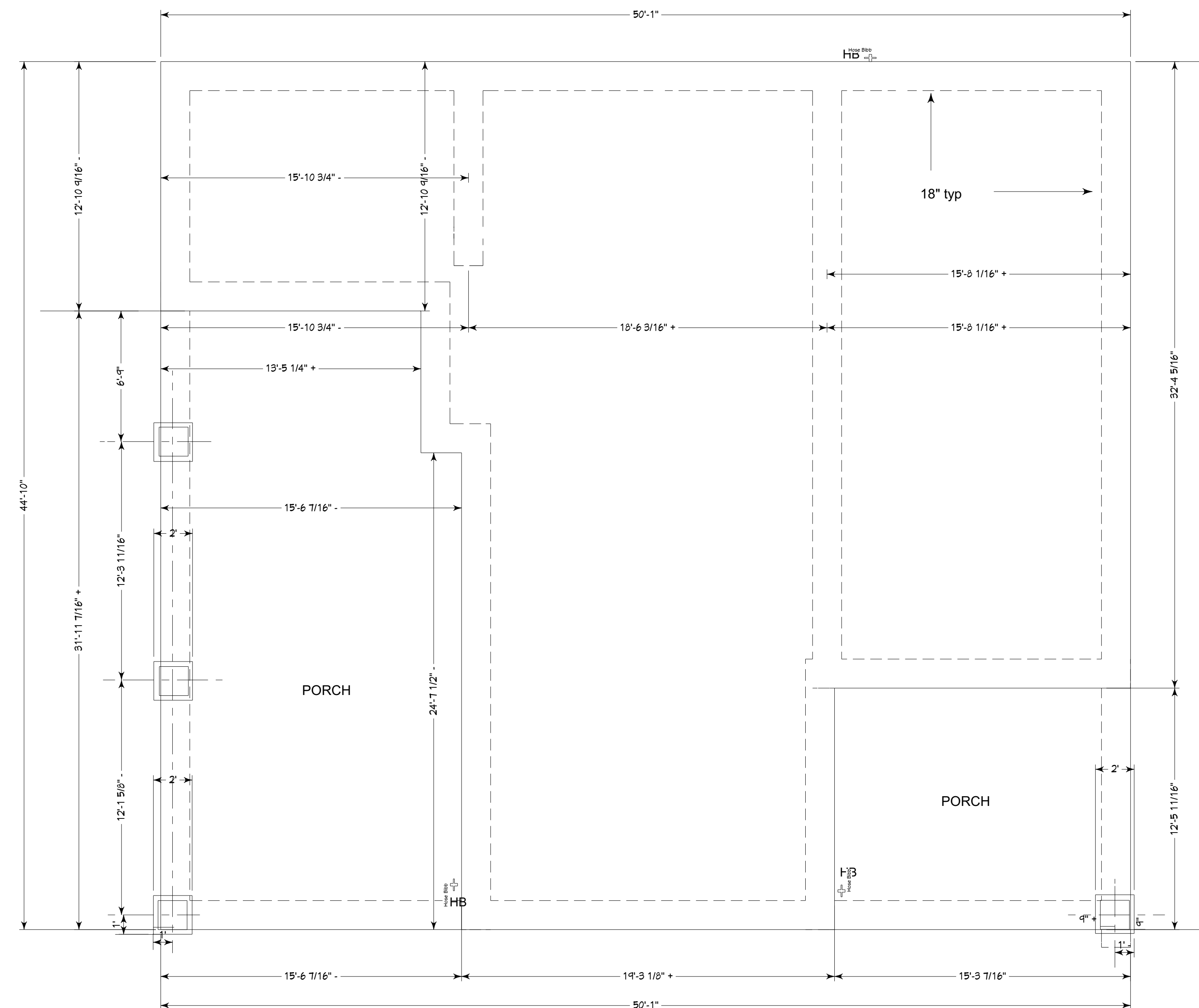
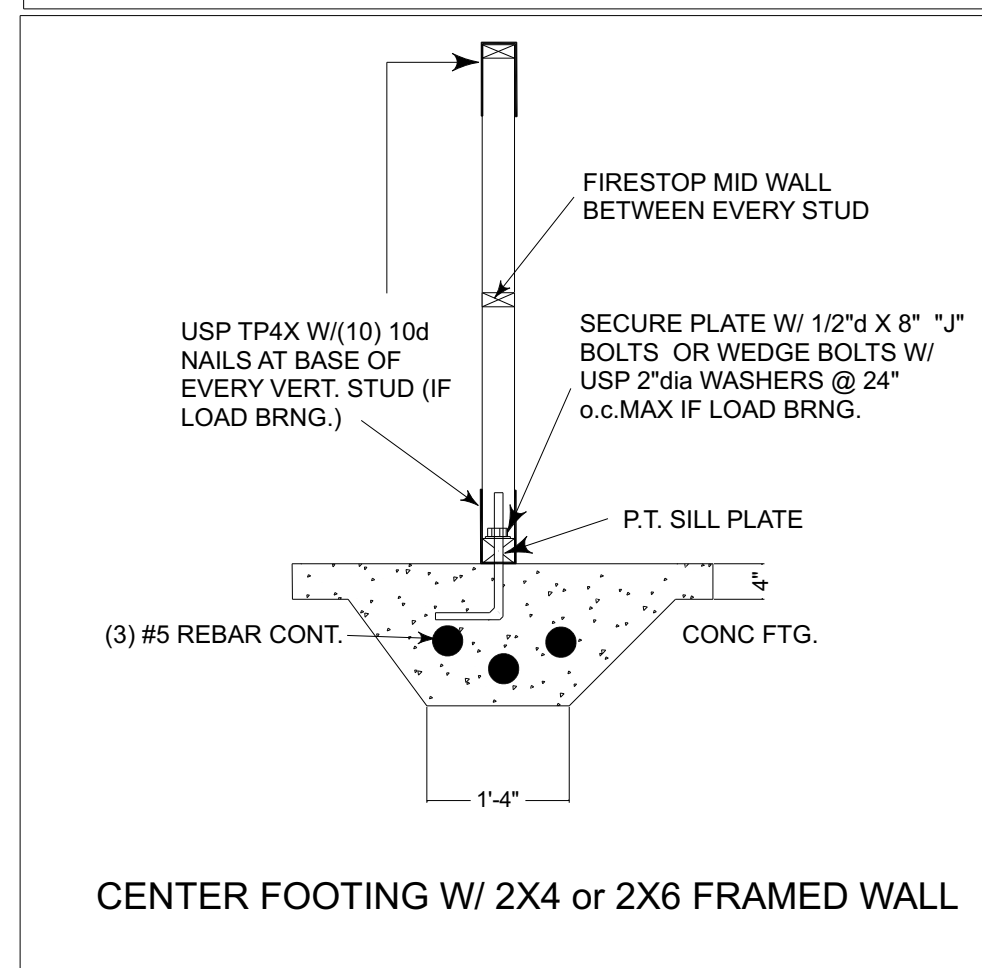


SECOND FLOOR PLAN

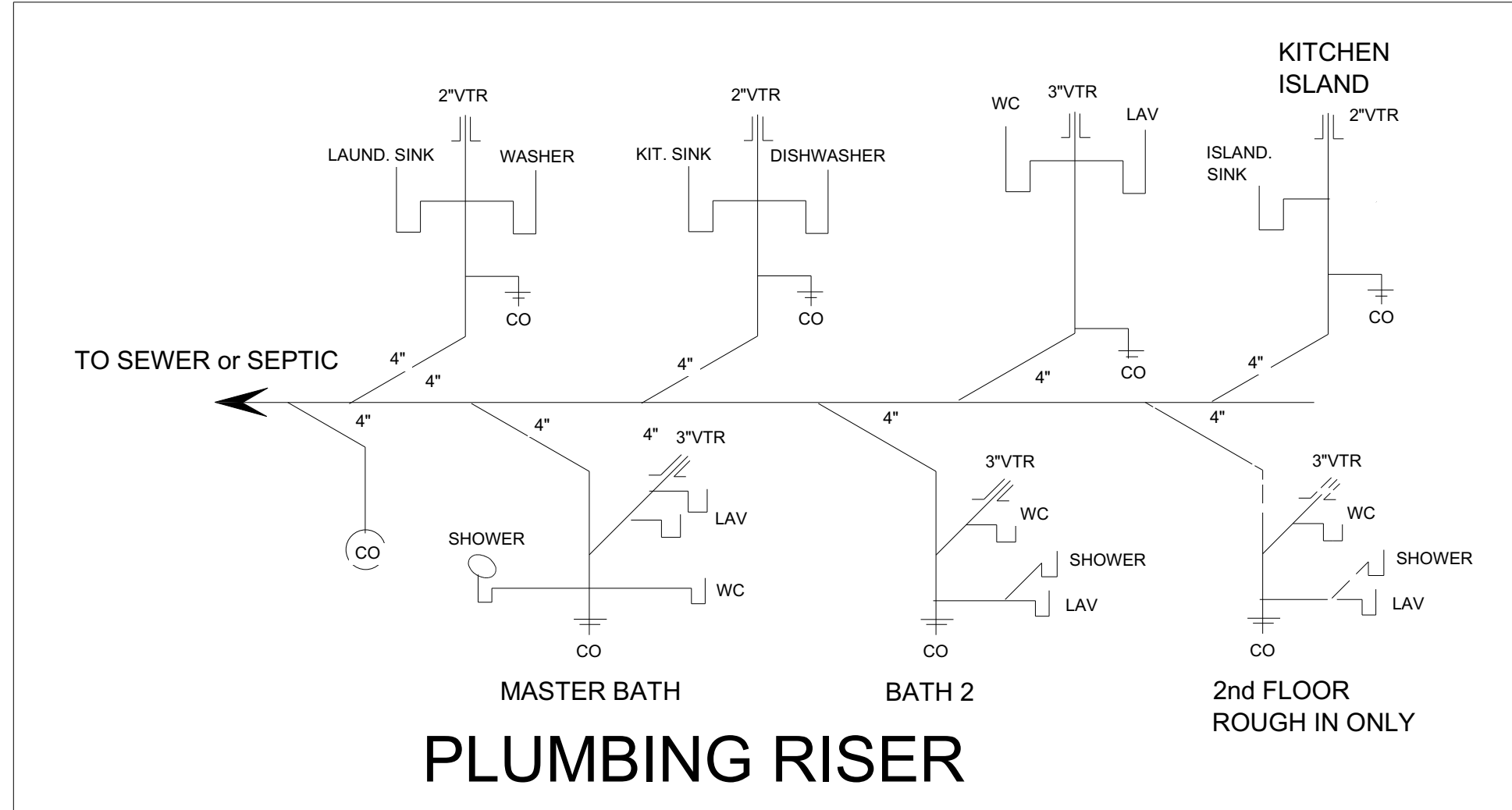
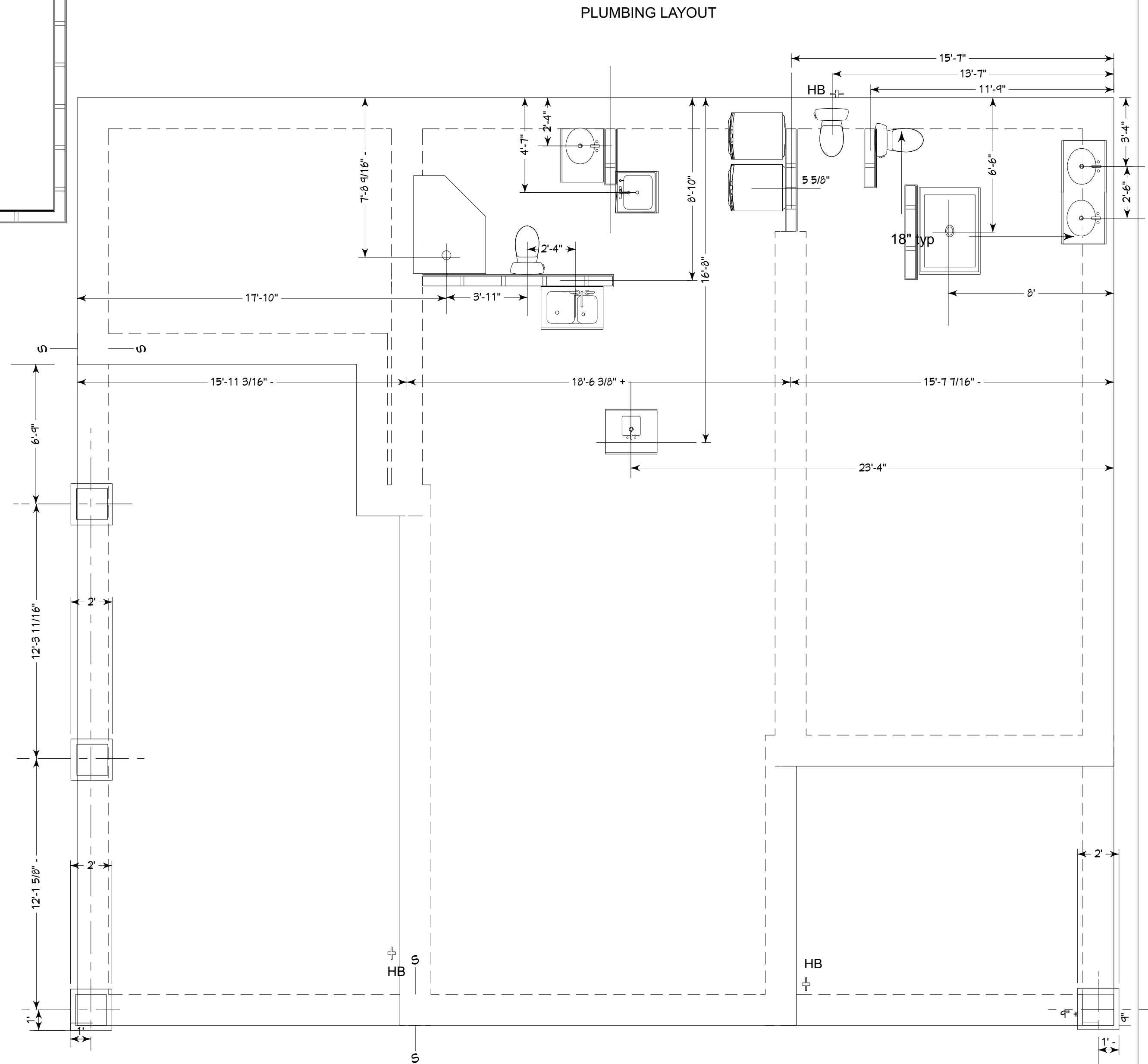
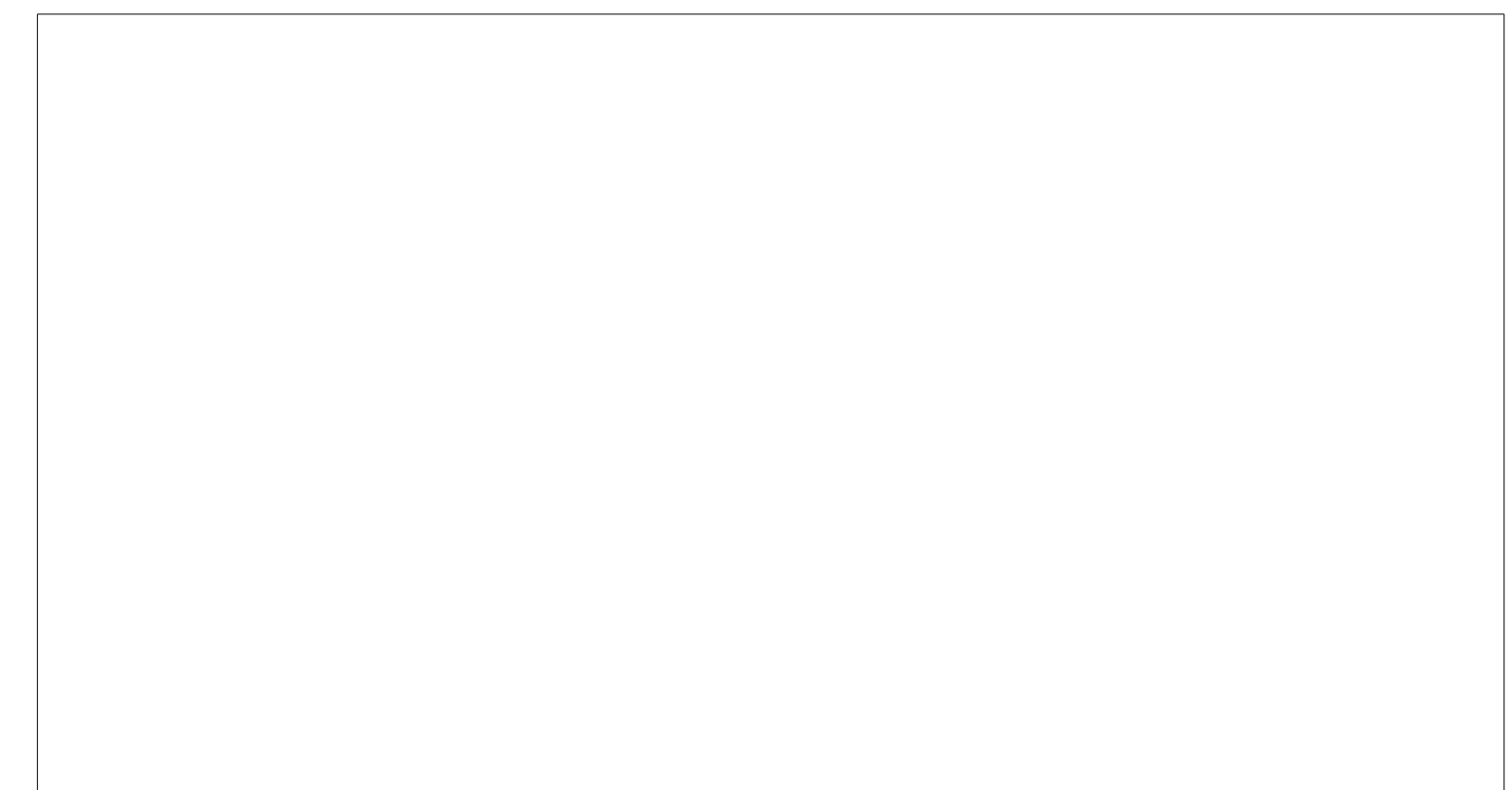
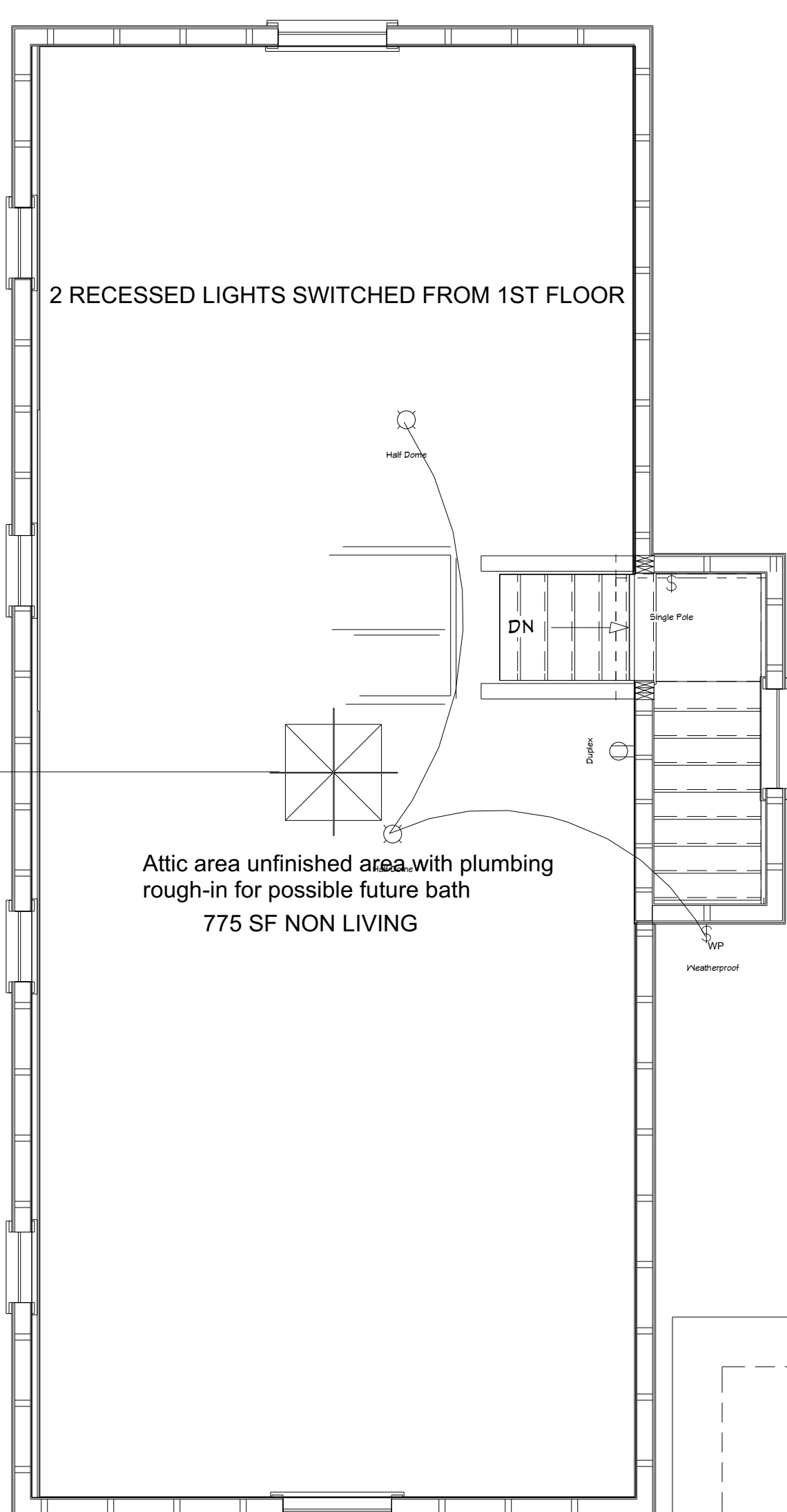
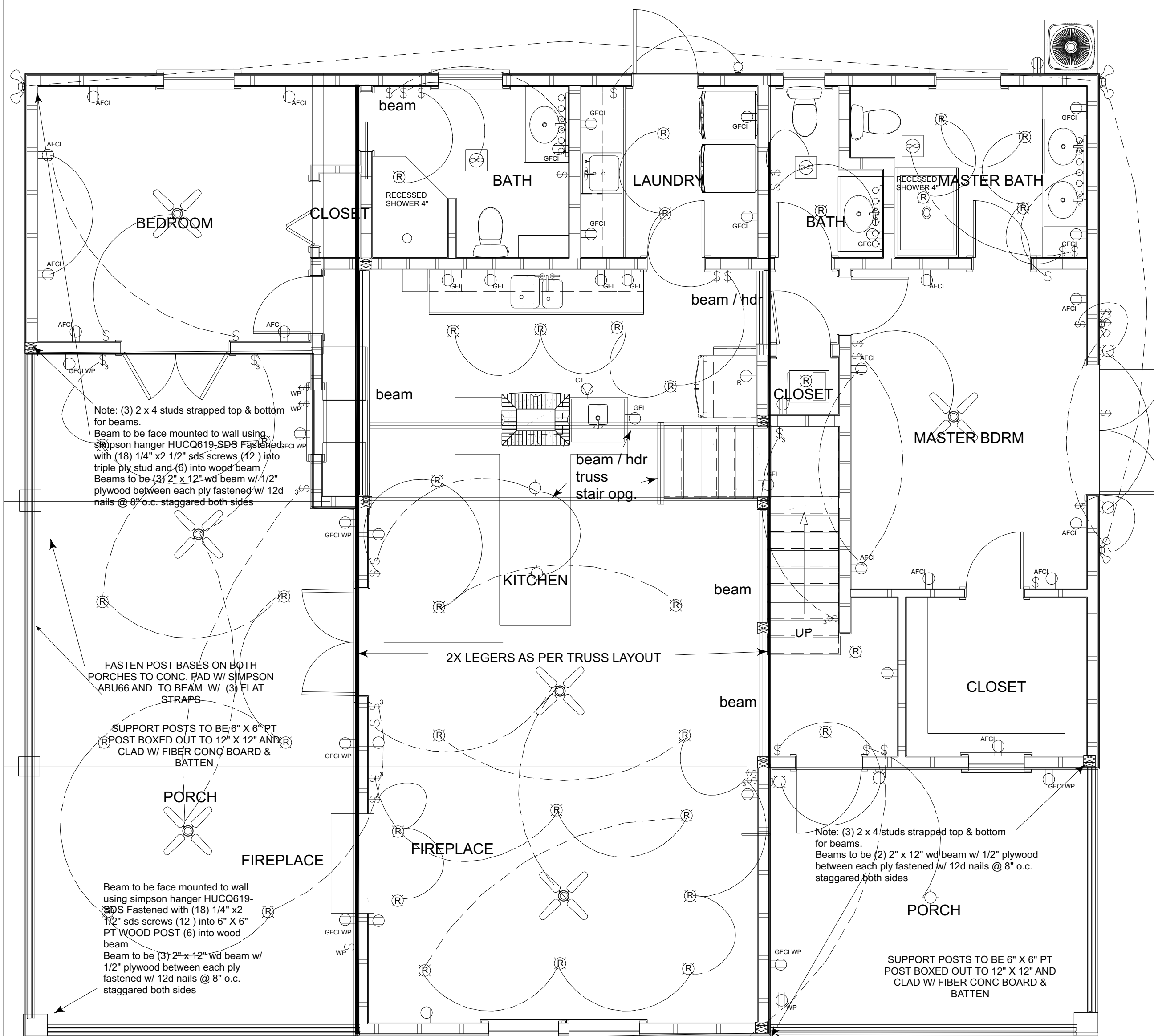


PROJ. \_\_\_\_\_  
DRWN. \_\_\_\_\_  
DATE. \_\_\_\_\_  
SHEET \_\_\_\_\_

2 OF 7



## FOUNDATION PLAN



NOTE:  
EXTERIOR & BEARING WALLS ON FLOORS 1 AND 2 WILL BE 2X6  
FRAMING @ 16" o.c.  
NON BEARING D LAUNDRY ,LLS WILL BE : KITCHEN NG @ 16" c HALL BATH  
2nd FLOOR WILL BE 18" WEB TRUSSES WITH THREADED ROD FROM  
TOP PLATE OF 1st FLOOR THRU TRUSS AND THRU BOTTOM PLATE OF  
2nd FLOOR WALL AND FASTENED W/ WASHER & NUT (SEE DETAIL)

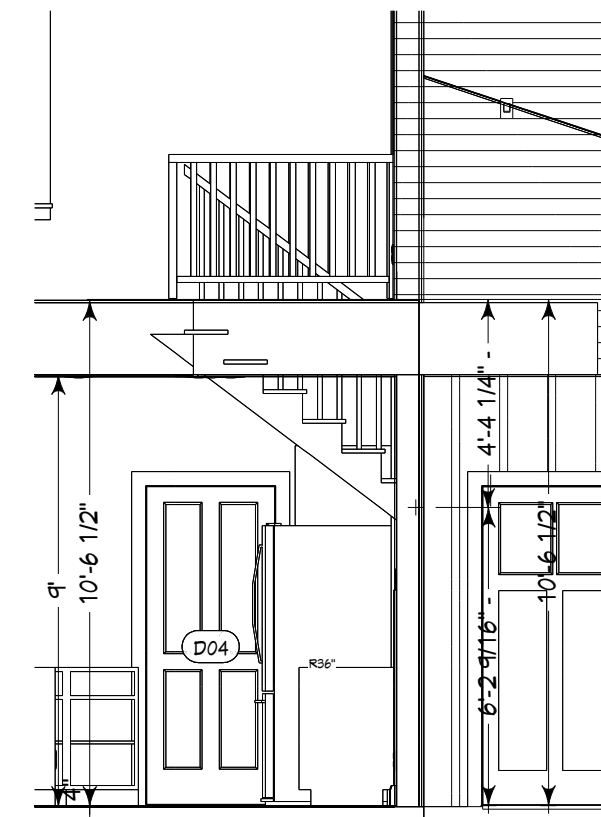
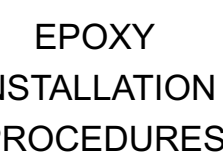
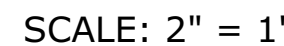
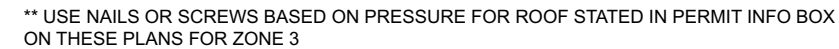
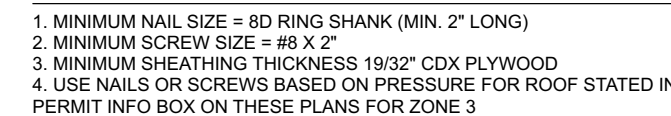
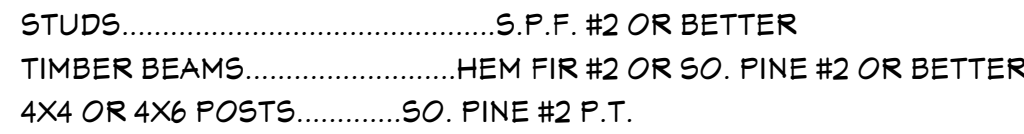
NOTE: EXTERIOR SPECS.  
ROOF MATERIAL WILL BE TO BE METAL (TO BE CHOSEN)  
SIDING TO BE HARDIE PLANK SIDING (TO BE CHOSEN)  
SOFFIT MATERIAL TO BE VYINL

Beam to be face mounted to wall and column using  
simspon hanger  
HUC0619-SDS (see  
"huc0619-SDS" Fastened with (18)  
1/4" x2 1/2" sds screws (12  
) into 6" X 6" PT WOOD  
POST (6) into wood beam

LP GAS LINES  
FROM TANK TO DWELLING TO SUPPLY  
STOVE  
FIREPLACE  
OUTDOOR BBQ

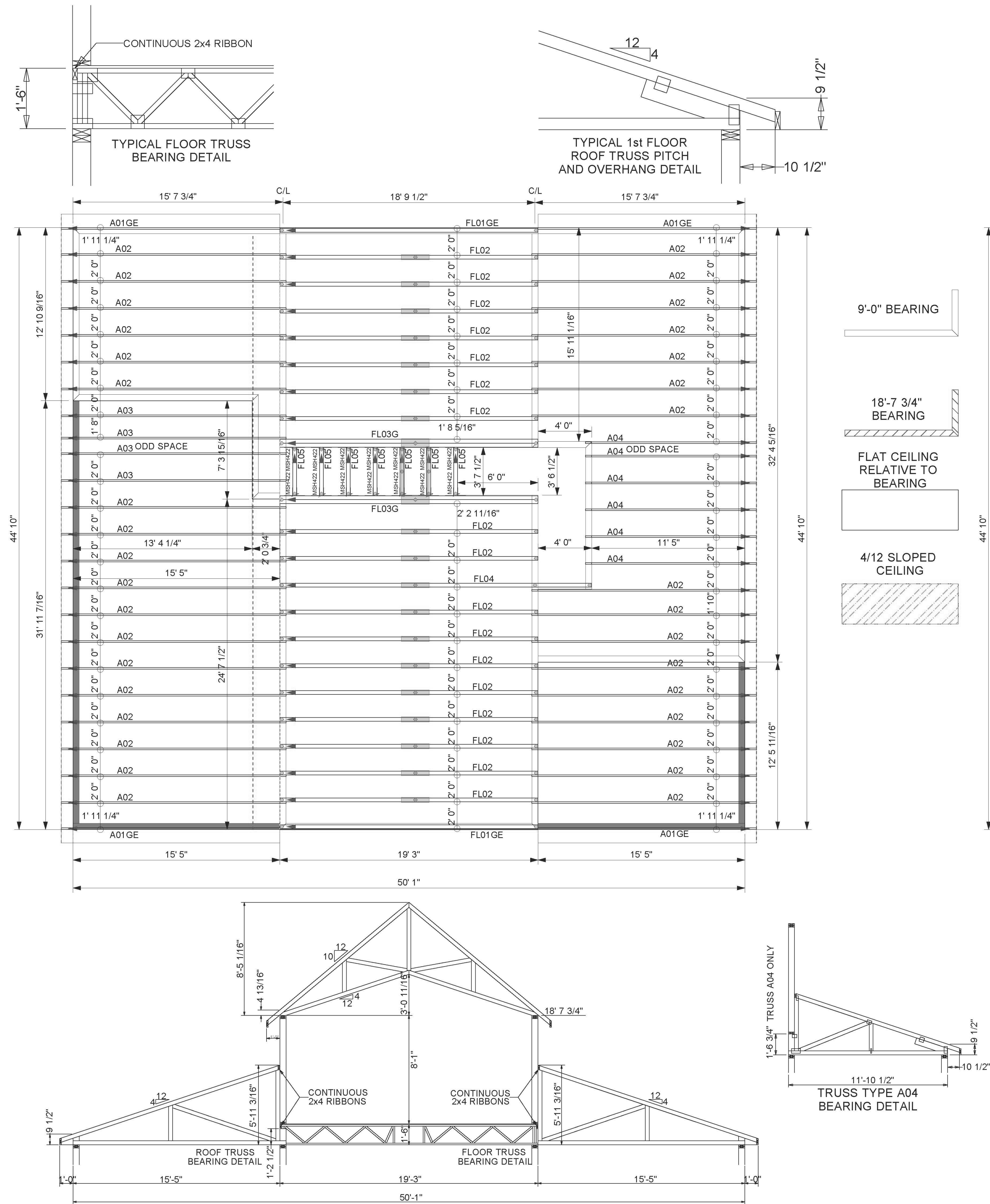
NOTE: SHOWER PAN AND FRAMED WALLS WILL  
MAKE UP ACTUAL SHOWER ENCLOSURE



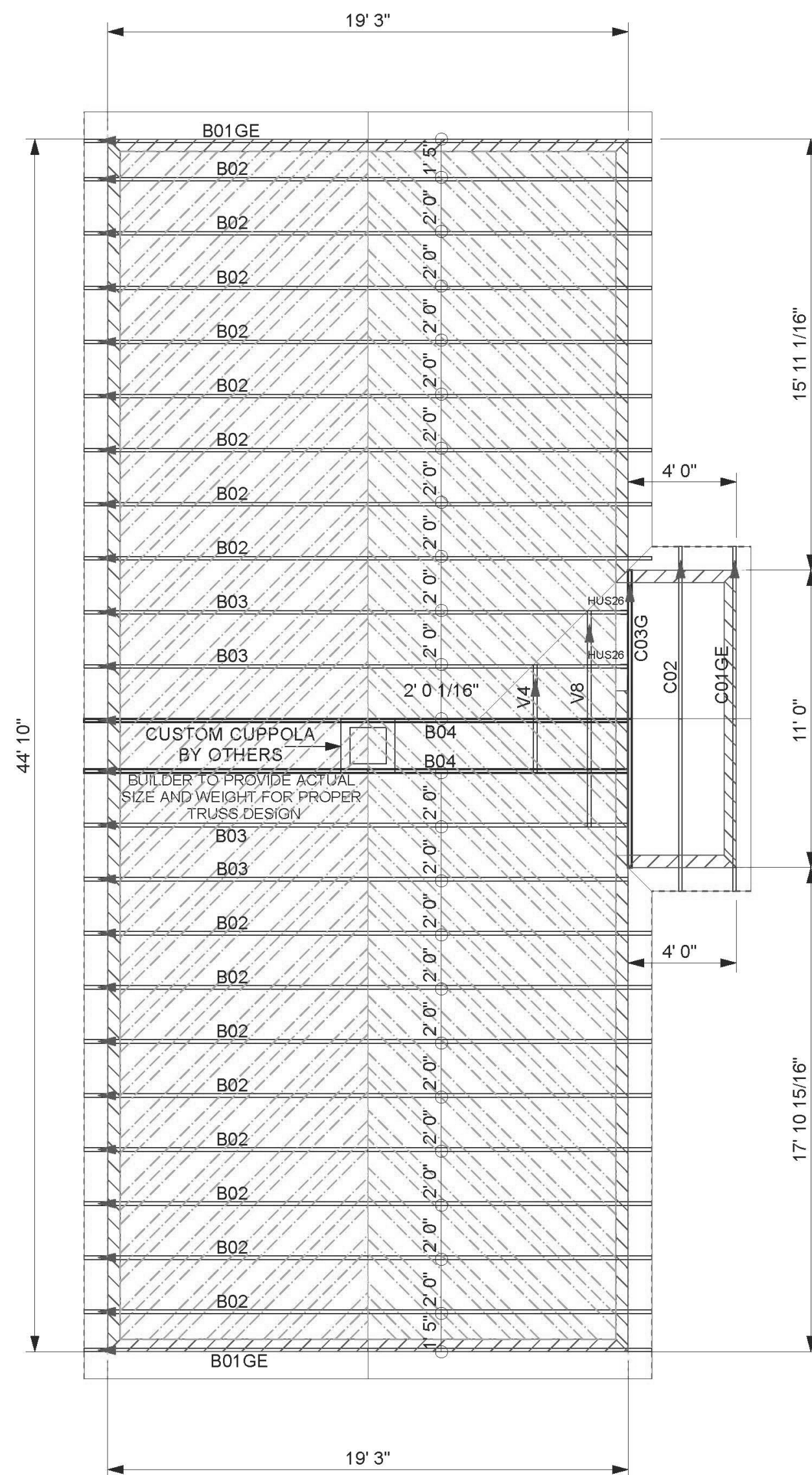
Contractor:




<p><b>*WARNING*</b></p> <p><b>ALL BEARING POINTS MUST BE INSTALLED PRIOR TO INSTALLING ANY TRUSSES!</b> FAILURE TO DO SO MAY RESULT IN DAMAGED TRUSSES AND WILL VOID ALL WARRANTIES.</p>	<p>-THIS IS A PLACEMENT PLAN FOR ENGINEERED COMPONENTS AS DEFINED BY WTCA 1 - 1995. DIAPHRAGMS HAVE NOT BEEN ANALYZED BY EAST COAST TRUSS.</p> <p>-FOR ERECTION AND INSTALLATION OF TRUSSES FOLLOW INSTRUCTIONS ON THE BCS-I81 SUMMARY SHEETS AND SEALED ENGINEERED TRUSS DRAWINGS.</p>	<p>-BRACING:</p> <ol style="list-style-type: none"> <li>1) FOR THE ERECTION BRACING FOLLOW INSTRUCTIONS ON THE BCS-I81 SUMMARY SHEETS</li> <li>2) PERMANENT BRACING FOR THE STRUCTURE IS THE RESPONSIBILITY OF OTHERS.</li> <li>3) INSTALL WEB BRACING AS STATED ON SEALED ENGINEERING TRUSS DRAWINGS.</li> </ol>	<p>-SEE FINAL ENGINEERING SHEETS FOR THE STRUCTURAL DATA, NUMBER OF GIRDER AND TRUSS PILES AND THE CONNECTION INFORMATION.</p> <p>-OUR DESIGN DEPARTMENT MUST APPROVE ALTERATIONS AND/OR REPAIRS TO TRUSSES IN ADVANCE.</p>	<p>OUR DESIGN DEPARTMENT APPROVES THEM IN ADVANCE</p> <p>-ALL HANGERS ARE SIMPSON STRONG-TIE OR USP UNLESS OTHERWISE NOTED. INSTALL HANGERS ACCORDING TO THE CURRENT SIMPSON STRONG-TIE OR USP CATALOG</p> <p>-BACK CHARGES WILL NOT BE ACCEPTED UNLESS</p>
--	---	---	---	---



## TRUSS PLACEMENT PLAN



### 2nd FLOOR ROOF TRUSS PITCH AND OVERHANG DETAIL

<div><div>ENGINEERED TRUSS SYSTEMS</div><div><div>TIMBER PRODUCTS</div></div></div> <div>EAST COAST TRUSS</div> <div>5285 ST. LUCIE BLVD. FT. PIERCE, FL 34946 OFFICE: (877) 466-3480 FAX: (877)466-5336</div>	
<b>CUSTOMER: Green-R-Panel Systems</b> JOB NAME: Boulogne ADDRESS: 3201 Hwy 441 N CITY/COUNTY: Okeechobee	
JOB # <b>J37104 FLOOR</b> JOB # <b>J37105 ROOF</b>	
MODEL: Custom 2-Story	
SQ FT 3159 DATE 12/11/18	
[LATEST= / ]	
IN ACCORDANCE WITH THE FLORIDA ADMINISTRATIVE CODE SECTION 13-000 AND 13-010, EAST COAST TRUSS IS THE DESIGN BUILDING CONTRACTOR. Trusses are designed in accordance with the Florida Building Code	
NOTE: By approving this placement plan(s), signatory anywhere on this sheet, the customer or his representative acknowledges that this placement plan complies with the structural intent of the project. The customer also acknowledges that this approval authorizes EAST COAST TRUSS to manufacture these trusses and deliver them to the project indicated on this drawing. The customer also acknowledges that he/she accepts financial responsibility for any repair, engineering, and labor required due to errors other than those of EAST COAST TRUSS.	
Signed: _____ Date: _____	
CODE = FBC 2017/TP2104 ASCE 7-10 DESIGN CRITERIA = MWFRS OCCUPANCY CATEGORY = II EXPOSURE = B MWFF SPEED = 150 BUILDING TYPE = ENCLOSED MEAN HEIGHT: 23	
GRAVITY LOADS	
FLOOR: DUR FACTOR= 1.0 PSF=TCLL-TCDL-BCLL-BCDL 40.0,10.0,0.0,0.5,0 ROOF: DUR FACTOR= 1.25 PSF=TCLL-TCDL-BCLL-BCDL 20.0-10.0-0.0-10.0	
LOADS PER FBC & FRC *NON-CONCURRENT BC LL 10psf CONCURRENT BC STORAGE LL 20 psf	
DEFINITIONS MWFF = MAIN WIND FORCE C&C = COMPONENTS AND CLADDING TOB = TOP OF BEARING TC = TOP CHORD BC = BOTTOM CHORD LL = LIVE LOAD DL = DEAD LOAD PSF = POUNDS PER SQUARE FOOT # = POUNDS UPLIFT MUST BY-PASS FLOOR TRUSSES UNLESS SHOWN ON ENGINEERED TRUSS DRAWING. ALL GIRDER/COLUMN LOADS MUST BY-PASS FLOOR TRUSS UNLESS SHOWN ON ENGINEERED TRUSS DRAWING. 2X6 SPANNING BACK BRACING, 10'-0" O.C., IS RECOMMENDED ON FLOOR TRUSSES SPANNING 20'-0" OR MORE CAUTION: SPANS GREATER THAN 30'-0" MUST BE SET WITH A SPREADER BAR. THE SPREADER BAR SHOULD BE AT LEAST 1/2 TO 2/3 IN LENGTH AS THE SPAN OF THE TRUSS BEING SET. REFER TO BCI-B1 FOR COMPLETE ERECTION AND SAFETY PROCEDURES.	
ALL BEAMS BY BUILDER	
NOTE: TRUSSES DO NOT SUPPORT ANY PLANT SHELVES	
REVISIONS	
1- 2- 3- 4- 5- 6-	
(1/4" if plotted 24x36) Designed By: BH	

