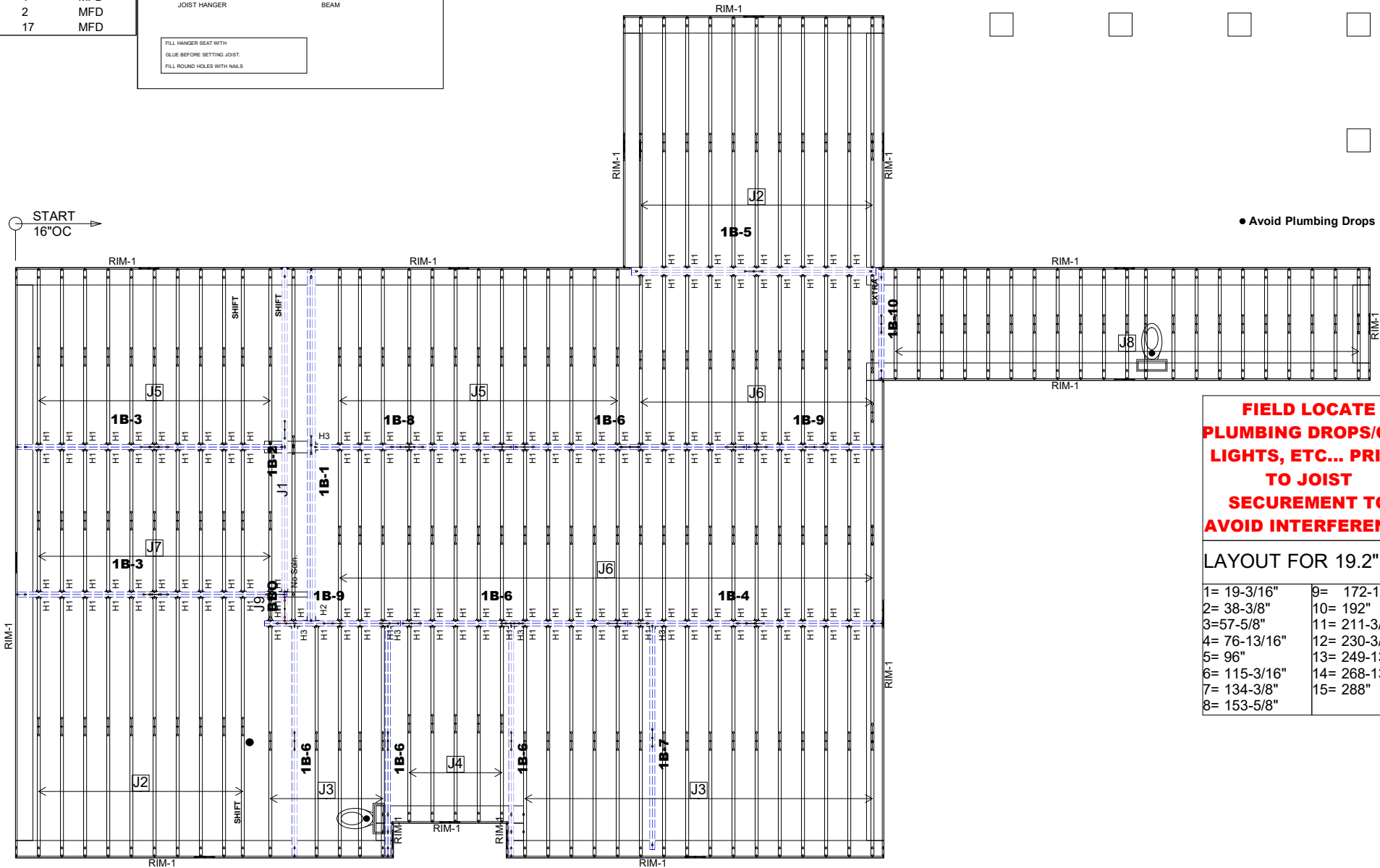
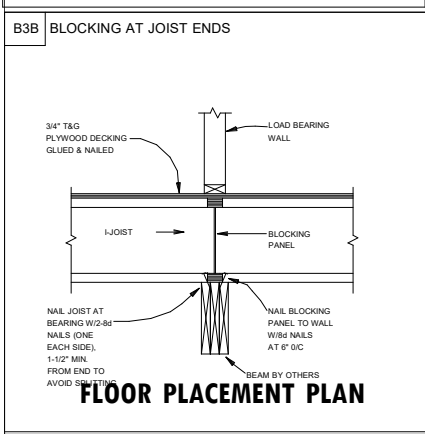
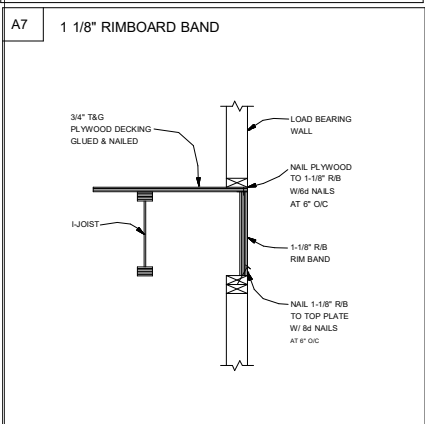
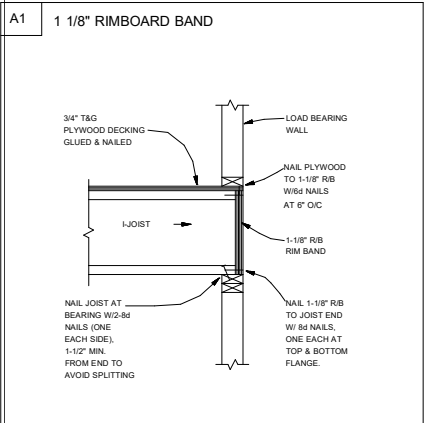
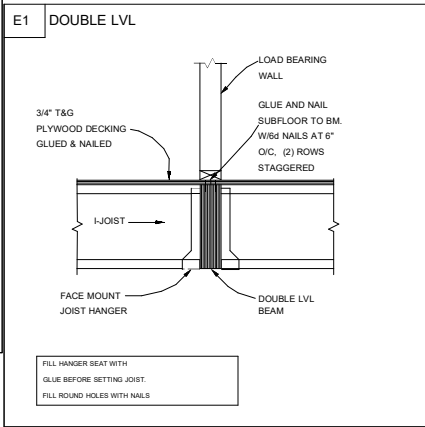


Products					
PlotID	Length	Product	Plies	Net Qty	Fab Type
J1	21' 0"	11 7/8" TJ@ 210	1	1	MFD
J2	15' 0"	11 7/8" TJ@ 210	1	21	MFD
J3	14' 0"	11 7/8" TJ@ 210	1	21	MFD
J4	12' 0"	11 7/8" TJ@ 210	1	5	MFD
J5	11' 0"	11 7/8" TJ@ 210	1	24	MFD
J6	10' 0"	11 7/8" TJ@ 210	1	35	MFD
J7	9' 0"	11 7/8" TJ@ 210	1	11	MFD
J8	7' 0"	11 7/8" TJ@ 210	1	21	MFD
J9	2' 0"	11 7/8" TJ@ 210	1	1	MFD
1B-1	21' 0"	1 3/4" x 11 7/8" 2.0E Microllam® LVL	3	3	MFD
1B-2	19' 0"	1 3/4" x 11 7/8" 2.0E Microllam® LVL	2	2	MFD
1B-3	16' 0"	1 3/4" x 11 7/8" 2.0E Microllam® LVL	2	4	MFD
1B-4	15' 0"	1 3/4" x 11 7/8" 2.0E Microllam® LVL	2	2	MFD
1B-5	15' 0"	1 3/4" x 11 7/8" 2.0E Microllam® LVL	3	3	MFD
1B-6	14' 0"	1 3/4" x 11 7/8" 2.0E Microllam® LVL	2	10	MFD
1B-7	13' 0"	1 3/4" x 11 7/8" 2.0E Microllam® LVL	2	2	MFD
1B-8	12' 0"	1 3/4" x 11 7/8" 2.0E Microllam® LVL	2	2	MFD
1B-9	8' 0"	1 3/4" x 11 7/8" 2.0E Microllam® LVL	2	4	MFD
1B-10	7' 0"	1 3/4" x 11 7/8" 2.0E Microllam® LVL	2	2	MFD
RIM-1	16' 0"	1 1/8" x 11 7/8" TJ@ Rim Board	1	17	MFD

Connector Summary			
PlotID	Qty	Manuf	Product
H1	157	MiTek	IHFL20112
H2	1	MiTek	THD612
H3	6	MiTek	THDH412



**FIELD LOCATE
PLUMBING DROPS/CAN
LIGHTS, ETC... PRIOR
TO JOIST
SECUREMENT TO
AVOID INTERFERENCE.**

LAYOUT FOR 19.2" O/C

1= 19-3/16"	9= 172-13/16"
2= 38-3/8"	10= 192"
3= 57-5/8"	11= 211-3/16"
4= 76-13/16"	12= 230-3/8"
5= 96"	13= 249-13/16"
6= 115-3/16"	14= 268-13/16"
7= 134-3/8"	15= 288"
8= 153-5/8"	

GENERAL NOTES:

- 1.) TOP CHORD OF JOISTS ARE PAINTED RED AT NUMBERED END. PLACE PAINTED END AS NOTED ON PLAN.
- 2.) FOLLOW SPECIAL SPACING AND LOCATION DIMENSIONS FOR EXTRAS OR SHIFTED JOISTS AS SHOWN ON PLAN.
- 3.) ALL INTERIOR WALL PLATES MUST BE LEVEL WITH OUTSIDE WALL TOP PLATES.
- 4.) DO NOT STACK CONSTRUCTION LOADS ON UN-BRACED JOISTS.
- 5.) PROVIDE SOLID SUPPORT BELOW ALL BEAM AND HEADER BEARING POINTS IN WALL AND JOIST SPACES CONTINUOUS DOWN TO THE FOUNDATION.
- 6.) LOCATE CRIPPLE STUDS IN JOIST SPACE DIRECTLY BELOW HEADER JACKS AT ALL FIRST FLOOR EXTERIOR DOOR LOCATIONS.
- 7.) INSTALL NAILS IN ALL HOLES PROVIDED IN JOIST HANGERS EXCEPT AT BOTTOM CHORD SEAT. PLACE A DAB OF GLUE IN THE HANGER SEAT BEFORE SETTING JOISTS.
- 8.) IMPORTANT NOTE! NO STRUCTURAL ANALYSIS OF CONVENTIONAL HEADERS HAS BEEN CONDUCTED IF NOT NOTED. THEY ARE CONSIDERED TO BE ADEQUATE TO SUPPORT THE APPLIED LOADS.

PLAN LEGEND

1B-, 2B-	*INDICATES BEAM ABOVE TOP PLATE (FLUSH WITH FLOOR SYSTEM)
H-, 1H-, GDH-	*INDICATES BEAM BELOW TOP PLATE (DROPPED BELOW FLOOR SYSTEM)
*BEAMS MAY PROTRUDE ABOVE OR BELOW DECKING OR TOP PLATE RESPECTIVELY. REFER TO DETAIL IF BEAM IS A DIFFERENT DEPTH THAN FLOOR SYSTEM	
	SINGLE PLY BEAM (ADD LINE FOR EACH ADDITIONAL PLY)
SHIFT	SHIFT JOIST TO MISS PLUMBING, ALIGN W/ WALL OR SUPPORT FURNITURE
EXTRA	A JOIST ADDED TO THE LAYOUT IN ADDITION TO THE ON CENTER JOISTS
DOUBLE	TWO JOISTS SIDE BY SIDE (ONLY ASSEMBLED IF NOTED)
ALL DIMENSIONS TO CENTERLINE UNLESS OTHERWISE NOTED	

FRAMER NOTE

1. GLUE AND NAIL PLYWOOD SUBFLOOR TO BEAMS AND GIRDERS AT 6" O/C WHERE NO WALL IS ABOVE.
2. FILL HANGER SEAT WITH GLUE BEFORE SETTING JOIST IN HANGER. FILL ROUND HOLES WITH NAILS.

CRITICAL !!

INSTALL 2X4 SQUASH BLOCKS IN FLOOR TRUSS SPACE BELOW ALL EXTERIOR DOOR HEADER JACKS. CUT 1/16" TALLER THAN TRUSS.

**FIELD VERIFY DIMENSIONS TO
JOISTS LOCATED UNDER WALLS!!**

SCALE: 1/8"=1'

GREEN R PANELS

REVISIONS	DESCRIPTION	DATE	DSN

DESIGNER DV
LAYOUT DATE 10/25/2023
ARCH DATE -
STRUC DATE -
JOB #: 23071240F1